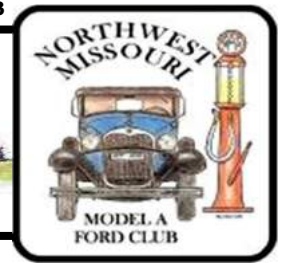




The ROAD RUNNER



MAFCA Chapter

MAFCA "Newsletter of the Year 2019", MARC "Award of Excellence" 2019

MARC Region

Officers

President:	Mike Owen
Vice President:	Bill Skaggs
Secretary:	Terry Richardson
Treasurer:	Bob Martin
Activities/Tours:	Chili Canida
Technical:	Tony Flieg
Ladies Activities:	Laura Talley
Concerns/Calling:	Jody Layne
Membership/Public Relations:	Myron Schmitt
Newsletter/Webmaster:	Sherry Winkhofer
Property:	Vacant
Director:	Junior Blakley
Director:	Larry Harding

Birthdays

Clyde Pace	11/01	Daryl Powell	11/09
Pat Wishon	11/04	Jeanne Harding	11/14
Kay Chrane	11/05		

Anniversaries

Malcolm & Sherri McIntyre	11/01
Harvey & Vicky Roseberry	11/08

Monthly Meeting

November 6, 2023

American Legion, 2607 NW State Route 92
Smithville, MO 64089

The Legion provides a dinner menu at a special price
one hour prior to the 7:00 PM meeting.

Board Meeting

November 16, 2023

The 3rd Thursday of each month,
7:00 PM, Woodneath Library Center
8900 NE Flintlock Rd, Kansas City, MO 64157
Visitors welcome

Technical Meeting & Breakfast Club-KC

Big Biscuit in Liberty

Please join us every Wednesday 6:30 am to "whenever"
at the Liberty Corner Shopping Center, at 840 Hwy 291
(816-429-5314)

Technical Meeting & Breakfast Club-St Joe

Every Monday 7:00-10:00 AM

Hy-Vee 201 North Belt Highway, St. Joseph

President's Comments:

We had a very informative talk on estate planning by attorney Dave Wells ,At our last meeting .I became aware of some issues I hadn't thought of. Thanks ,Dave!

We also had a report From members Bill Mattison and Lee Donius on their recent honor flight trip to Washington DC

As Linda requested I drove her to the ladies luncheon last month. I enjoyed a very nice meal with the ladies who were all nicely dressed for the occasion

I can also report we had wonderful weather for our fall mystery cruise. We had nine model A's and one modern car gather at Platte City McDonalds. The trees were very colorful for our trip over the back roads of northwest Missouri. Our halfway stop was at the home of John Sonder to see his collection of almost everything gas and car related, plus many other things. It was awesome! We then turned back south to Tracy to enjoy a luncheon at the Country Café at the Trex service station. Thanks to Terry Richardson and Chili for putting this trip together for us.

I was so happy to make our first outing in the 31. I've been working on it for the last year and overall it did very well Thank you club members for your advice and parts that made it possible!

Mike Owen, President

It's better to learn late than never!

Editor's Comments:

Well, this is a first! I somehow misread my calendar and this is the first newsletter ever this late in 15 years! I must have bumped my head harder than I thought during that fall! I'm all recovered from it, but apparently my calendar awareness is still off! My face is red with embarrassment! When I realized I wouldn't get this in mail until the day of the meeting, I was appalled!!!

I'm not sure how it happened, but it's been a hectic few weeks. My heating system failed, and it was panic-time getting someone to install a new one. And with some family health issues all occurring at the same time, things just got away from me. My sincere apologies to everyone, I promise to do much better from now on!

On the positive side, my garage is totally finished, and the Old Lady is snugly tucked away inside for the winter. Still some organizing to do, but it's looking better all the time.

I apologize again for the late newsletter, hope you all had the meeting marked on the calendar already and didn't miss the fun!

Happy A'ing—Sherry Wink

Editor

NORTHWEST MO. MODEL A FORD CLUB MEETING

American Legion Hall Smithville, Missouri

October 2, 2023

President Mike Owen opened the Meeting at 6:50 pm with the Pledge of Allegiance.

Vice President: Bill Skaggs introduced attorney David Wells as our guest speaker. David talked about estate planning.

Treasurer: Bob Martin gave the Treasurer's report; Checking \$2,441.28, Savings \$10,055.02 for a total \$12,996.30.

Secretary: The minutes from Secretary Terry Richardson were approved as printed in the Road Runner.

Tours: A Mystery Tour is planned for October 21. Bill Skaggs is considering putting together another Fall Foliage tour. October 20th Ladies luncheon at Stroud's Oak Ridge Manor, 5410 NE Oak Ridge Drive, Kansas City, Mo.

Myron Schmitt Membership reported there were 32 members at Meeting.

Bill Matteson and Lee Donius talked about their Honors Flight to Washington D.C. The club voted to donate \$200 the MAFFI Model A Museum.

Meeting adjourned at 7:45 p.m. Terry Richardson, Secretary



MAFCA ANNOUNCES 50 YEAR AWARD PROGRAM

Each year one of the privileges for the Chapter Coordinator for MAFCA is to recognize those chapters who have achieved certain milestones in their history for their years of continuous operation. This is done by awarding a certificate of achievement designating that milestone. These are then delivered to each chapter to display. We are proud to announce a new program to enhance this.

This year by unanimous vote the MAFCA Board of Directors and in an agreement with MAFFI and the Model "A" Ford Museum we approved to begin recognizing those chapters who have achieved the high honor of 50 years of continuous membership in the Model "A" Ford Club of America in a special way. For those chapters an inscribed brick will be placed on behalf of MAFCA at the Model "A" Museum by the Model "A" Ford Foundation or MAFFI. This permanent enshrinement of this accomplishment will be on display 365 days a year to celebrate this high honor.

We cannot however just begin this recognition in 2023. We must also look back to past award recipients as well as look at our current winners. To do so 94 bricks will be ordered this year that will include all prior 50 year Chapter Longevity Award winners. This begins with our first chapter, the Bakersfield, California Club, as well as including the 2023 and 2024 winners which will be placed in time for the 2024 Model "A" Days celebration. Each year after a brick will be placed in honor of those 50 year chapters reaching this milestone. Those recognized in this sidewalk of 50 year Chapter Longevity Winners is meant to demonstrate their special place in MAFCA's history and their significance in the success of MAFCA.



It is our hope that with this permanent recognition and placement of these bricks, those MAFCA members and others who visit the museum, will feel the same sense of pride and accomplishment in these recipient's as the Model A Ford Club of America does.

Will Langford

2023 Chapter Coordinator



Activities

"Departure places and times for events will be published on the Website and Newsletter the month prior to the event".

November 8th—Ladies Luncheon & Christmas Party
 Grunauer Austrian Restaurant, 101 W. 22nd St., Kansas City, MO
 See details on page 9
 Call Loura at (816) 632-1776 (leave a message!)
 to reserve your spot!

November 11—Veterans Day Parade
 Leavenworth, KS
 More info below
 Staging begins at 9 AM, check with Mike Owen for details

December 2nd—Christmas party
 11:30 am at Kozak's, 1018 US 169 highway, Smithville
December 2nd—Smithville lighted Christmas parade
 Lineup at 5 pm, details pending

Other Activities

Nov 30-Dec 2—MAFCA National Awards Banquet
 Santa Maria California
https://www.mafca.com/calendar_future.html

If you are planning on joining in on any of the tours or activities, please sign-up and include your phone number, or you can contact Chili Canida at (816) 415-4948 (home phone.) That way if an event has to be canceled, or has a location or schedule change, he will do his best to make sure you are notified!



Lee and Bill shared their recent Honor Flight experience



Last Meeting:
 Attorney David Wells shared some well grounded and savvy advice and important information about estate planning and other legal concerns that occur as we age.
 It was a well received lesson.
 Thanks David!

LEAVENWORTH COUNTY VETERANS DAY PARADE


November 11, 2023
 10:30am Downtown Leavenworth

Staging begins at 9am
 Monetary Awards for Best Float
 Go to www.lvvetsparade.com
 submit your parade application



LEAVENWORTH COUNTY VETERANS DAY PARADE
104th Annual Parade
 "Honoring Our Veterans Service
 Past and Present"

Cares & Concerns

 **Our Sunshine/Concerns Lady is Jody Layne.**
 If you know of anyone that could use a call or a card, please let her know at 816-225-7680 or send her an email at jolayne60@yahoo.com

Club Contact Information:

President Mike Owen (816) 645-8686
 All Officers: nwmomodelafordclub@gmail.com
 Publications: nwmomodelafordclub@gmail.com
 816-519-2630

Any articles or notes without a byline are written by your editor.

Visit www.nwmomodela.com today!
 Please mail any info, pictures, questions & suggestions to:

NWMO Model A Ford Club
 5606 Five Corners RD
 Smithville MO 64089

Or email:
nwmomodelafordclub@gmail.com

Christmas Party—December 2nd

Join the fun at KoZak's, located at
1018 US 169 Highway in Smithville!

Please arrive at 11:30 for socializing, we plan to eat at 12:00.

No payment in advance! This year you will be ordering off the menu so each person can choose their favorites, separate checks will be provided.

Time to get your Names in for this fun event!

Help us know how many to plan for by signing up at the next meeting, or calling Mike and Linda at (816) 645-8686

Continue the fun after the luncheon by participating in the
Smithville Lighted Christmas Parade!
Lineup at 5 pm, ask Mike for more details!



Please consider wearing your best vintage outfit to show off your Model A spirit!

There will be lots of fun, and some great food!

October Ladies Luncheon

From Laura Talley

We had a great time at Stroud's today! Our only guy was rewarded by winning one of the drawing gifts. Julie Parnell won the second prize. Our meals were outstanding and we had lots of leftovers. Topped it off with warm cinnamon rolls and good coffee!

We discussed the plans for our November and December meetings. Due to weather concerns and the busy holidays, it was unanimously agreed that we will have one outing on Wednesday, November 8th.

We had several options to choose from, and number one is at Grunauer Austrian Restaurant, 101 W. 22nd St., Kansas City, Mo. This restaurant offers Austrian and Central European cuisine, using classic Viennese techniques and family recipes. We encourage all the ladies to invite a guest to participate in a holiday spirited Santa gift exchange. Each lady is to bring a wrapped gift (not to exceed \$15) for herself and one for her guest. We don't want anyone going home without a gift!



We will have final details and a sign up sheet at our club meeting in November. Feel free to call Laura if you have questions or concerns. Looking forward to having a great turnout for our final outing!!

Northwest Missouri Model A Ford Club Merchandise!

Order online at showmelogos.net/modelaclub/



Gildan Ultra Cotton T-Shirt

\$22.00



Port Authority Silky Touch Embroidered Polo

\$24.00



Harrinton Ladies Advantage Snap Protection Embroidered

\$27.00



Port Authority Challenger Embroidered Jacket

\$90.00



Port & Company Embroidered Visor

\$19.00



Sportsman Cotton Twill Adjustable Embroidered Cap

\$22.00

Fall Tour October 21st

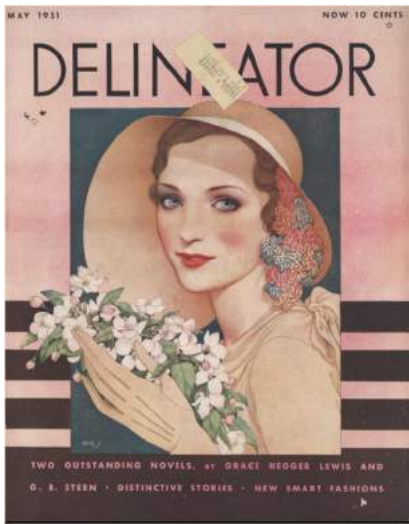
Nine model A's and one modern car had a great tour this colorful Saturday. The trip included a stop at the home of John Sonder's to see his collection! Then to Tracy to enjoy a luncheon at the Country Café. The pictures tell the story!



Fashions from One Issue of the Delineator

The fashion pages from the May 1931 issue

By Sherry Wink



Sometimes it's interesting to look at the fashion pages from one issue of a publication, as shown here. Interesting that most of these fashions are for fairly formal occasions. But it give us a good opportunity to catch the newest trends in designs, such as the plunging backs of the evening gowns, and the diagonal lines prominent in all of these dresses.

The commentary on these designs talk about scallops and frills being "in" and prints, floral, and contrasting fabrics all being "chic" and new. Bertha collars, lower hems, higher waistlines with yoked and/or flared skirts all helped define the 1931 look. Jacket frocks and short sleeves were also popular this year.



The May 1931 Delineator magazine included this interesting recipe in a Crisco ad. Another push for a free recipe book they were promoting called "12 Dozen Time-Saving Recipes". And if you guessed that all the recipes used Crisco, I'd bet you'd be right!

Strawberry Meringue Cake

- 1/3 cup Crisco
- 1/2 cup milk
- 1 cup sugar
- 1 1/2 cups flour
- 1/2 tsp salt
- 2 eggs
- 1/2 tsp vanilla
- 3 tsp baking powder



Blend fluffy Crisco (which comes already creamed) with sugar and eggs. Beat until light and frothy. Sift flour, baking powder and salt and add alternately with the milk. Add vanilla. Mix well. Turn into Criscoed shallow cake pan (8"x10") and bake in a hot oven (375°F) 30 minutes. Cool and cut in 3" squares. Hollow out centers. Fill with vanilla ice cream and top with strawberry meringue. (or serve only with strawberry meringue.)

Strawberry Meringue

- 1 cup crushed strawberries
- 1 egg white
- 2/3 cup granulated sugar
- 1 tsp lemon juice.

Put crushed strawberries sugar, lemon juice and egg white in large mixing bowl. Beat with Dover beater until light and stiff.

Brands We Still Know

By Sherry Wink

At 50 years-old, Johnson had worked as a parquet flooring salesman for a few years before buying the business in 1886. He re-named the company S. C. Johnson. Due to the unique care required for the parquet flooring, customer asked for products to maintain it properly. Johnson started experimenting, mixing up batches of wax in his bathtub. Soon, every floor was sold with a can of Johnson's Wax. It quickly become popular for all wooden floors. By 1898, the floor care products were more profitable than the flooring, and in 1917, the company stopped making flooring, and focused on their floor care products which were sold around the world.

In 1900, the company was one of the first in the USA to give paid vacations The company also donated 10% of it's profit to civic improvements. S.C. Johnson died in 1928, remembered as generous philanthropist, and his son Herbert continued the good works as president of the company. .

Interesting note: From April 1935 until May 1950, the company was the sponsor for the Fibber McGee and Molly radio show, officially known as The Johnson Wax Program.



1931 Ad

Staying in Your Lane

By Chris Wickckersham

Staying in Your Lane Is your Model A Ford a Nomad? Does it wander from one side of the lane to the other as you travel down the road? Do you consistently have to correct the steering to try to keep it going in a straight line? Many Model A folks complain about how difficult it is to keep their Model A going straight ahead. I get calls from owners who after rebuilding the suspension and steering, their Model A drives great around town but at faster speeds and especially when driving on the freeways, their Model A seems to wander all over the place. The tires are in good condition and balanced and the alignment is correct but the car seems to wander at speed. What is going on and how can this problem be corrected?

Model A's drove well when new, but most of the roads at the time were either graded dirt rural roads or paved roads in the cities and there were very few "high speed" highways where the speed of the cars would exceed 45 MPH, Today, more than 90 years after the Model A was first constructed, we have more challenging driving conditions to contend with, especially if we want to enjoy regional outings or extended touring in our Model A's. Here in Southern California, it is often necessary to sometimes use the freeways if we want to go on an extended tour. Freeway driving is where most owners complain about their Model A's wanting to "wander" and there is a very good reason for this. Most of our freeways have groves cut into the surface to improve traction and help prevent skidding and hydroplaning when it rains. This is not a problem with modern cars with better suspension and wide tires but the Model A driver often finds himself consistently having to correct the steering to stay in the center of their lane which can be a little disconcerting when driving "at speed". Why does this happen. The Model A chassis is designed with one cross spring at each end of the chassis which is attached in the center of the cross member above each axle. Swivel links or shackles, which allow for the necessary free up and down movement of the suspension, are used to attach each end of the spring to the outboard ends of the axle. This design will also allow for a small amount of side to side movement of the frame and body when the car is changing directions. Most of the time, this small side to side movement is not very noticeable and does not cause a problem but at speed, or when driving on the freeways with the grooved surfaces, this becomes very annoying and causes the driver to consistently have to make small corrections in the steering For example, as the driver steers the car slightly to the left, the spring shackles will allow the frame and body to sway or move slightly to the right, relative to the center line of the axle. The driver then steers the car slightly to the right to compensate for the sway in the body and the body will then sway to the left and the cycle is repeated. It is sort of like the tail wagging the dog.

What can be done about this problem? Limiting the side the side movement of the body and frame with a device such as a Panhard Bar will greatly help this situation. The Panhard bar is a very simple device, consisting of a rigid bar running sideways in the same plane as the axle. One end is connected to the frame and the other end to the axle on the opposite side of the vehicle. The bar attaches with a pivot on each end that will allow for up and down movement of the axle but restricts the side to side movement of the body and frame. Most of the better Model A Parts suppliers offer aftermarket Panhard Bar kits for both the front and rear of the Model A.

How well does this work? A few months ago, I received a call from one of our club members, Randy Harper, Randy had recently restored the front and rear springs and replaced the shackles on his Model A Coupe. He said the springs were all rusty and bound up and the shackles were worn out. When everything was all back together, the ride was much better but when he drove the car on the freeway, it seemed to wander and he had to consistently correct the steering to keep in its lane. He re-checked the alignment and made sure all the nuts and bolts were tight but nothing changed.

Randy asked me if the Panhard Bar kits that were available for our Model A's would help this problem. I advised him to give it a try, the principal was good and I had heard only positive comments from owners who had installed them. had experience with installing Panhard bars on other cars but not on a Model A and was curious about how much Improvement they may make.

Randy purchased kits for both the front and rear of his coupe. After installing the rear bar, he did a test drive on the freeway and reported back to me that "the difference was like day and night". Almost all of the wander was gone and he felt much more confident driving "at speed". After installing the front bar, Randy said he did experience additional improvement but not as dramatic as when he installed the rear.

Ford used the same basic suspension design clear thru 1948. After the war, as the cars became heavier and highway speeds increased,

Ford used Panhard bars and sway bars to help with the problem of the body and frame sideway movement relative to the axle. Installing Panhard bars on your Model A will improve the handling, especially if you plan to drive on the freeways and do some touring with your car.



Model A Mystery Part

What is it?

Do you know?

For "Bragging Rights", Send an email to nwmomodelafordclub@gmail.com
Or to Sherry Winkinhofer
PO Box 172, Table Rock NE 68447



Photo courtesy of Snyder's
Antique Auto Parts

Last Month's Mystery Part

This is a floor mat snap stud. It comes in a set of 4 to keep the floor mats in place. Did you know?!



Photo courtesy of Bratton's
Antique Auto Parts

Tony's Tech Tips

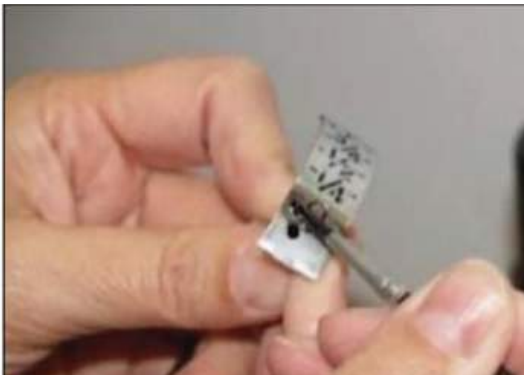
As found in the November 2023 newsletter of the Western Model A News, the official newsletter of the Model A Restorers Club of Western Australia, Inc.

Restoring the Fuel Level Indicator

Brian Amato, Traverse City, Michigan MAFCA

After spending over 80 years inside the gas tank of my 1930 standard coupe, the fuel indicator was looking pretty sad. Paint was missing from the numbers and the overall appearance was dingy and tarnished. I decided to see if I could bring it back to life.

Since the numbers are actually stamped into the indicator, lower than the surrounding surface, I figured I might be able to flow some new paint into the recesses, wait until it dried, and try to rub the paint off the top surface, leaving just the numbers painted. It worked like a champ. Here's what I did:



I gathered up a small artist's brush, a tiny cup, and some fuel proof paint. This is the same model airplane paint recommended to repaint your carburetor. After shaking the paint up for at least a full minute, I squirted some into the small cup.

Getting just a bit of paint on the tip of the brush, I let the paint flow into the recesses of the numbers where they had been chipped or eaten away over the years.

Once the paint had thoroughly dried, I looked around for something to rub the surface with. I decided against a cloth as being too floppy and might actually pull the paint back out of the recesses. I needed something smooth but stiff. A scrap piece of pine, from another project, laying on my work bench caught my eye. A sort of burnishing tool. Perfect!



I rubbed it over the now dried paint and it not only took off the unwanted paint around the numbers but it had a sort of polishing effect on the metal as well.

Whatever the surface of the indicator is plated with, it came right back, shiny as new and the numbers looked terrific (the lovely hands belong to my wife. I'm manning the camera.) This is going to look great, even behind the old, original bezel.

After cleaning and polishing the inner and outer rings as best I could, my gas gauge is ready to be reinstalled in the fuel tank and give another 80 plus years of service.



Time to sign up for next years fun!!



Northwest Missouri Model A Ford Club Membership Application

www.nwmomodela.com

<input type="checkbox"/> New Membership:		<input type="checkbox"/> Renewal:	
Name:		Spouse/Partner:	
Address:			
City:		State:	Zip:
Home Phone:	Member Cell:		Other Cell:
Member Email:		Other Email:	
Month/Day of Birth:	Anniversary:	Month/Day of Birth:	
Allow information for club roster or handbook yes <input type="checkbox"/> no <input type="checkbox"/>			
Model A Information (optional)			
Car 1 Year:	Model:		
Indicate Condition: <input type="checkbox"/> Show <input type="checkbox"/> Restored <input type="checkbox"/> Being Restored <input type="checkbox"/> Drivable <input type="checkbox"/> Basket Case			
Car 2 Year:	Model:		
Indicate Condition: <input type="checkbox"/> Show <input type="checkbox"/> Restored <input type="checkbox"/> Being Restored <input type="checkbox"/> Drivable <input type="checkbox"/> Basket Case			
Membership in National Organization			
<input type="checkbox"/> Model A Ford Club of America (MAFCA)		<input type="checkbox"/> Model A Restorers Club (MARC)	
<i>National affiliation is strongly encouraged but not required</i>			
Membership in other local clubs			
<input type="checkbox"/> Members of Plain Ol' A's <input type="checkbox"/> Heart of America <input type="checkbox"/> Henry's A's <input type="checkbox"/> Other:			
Auto Insurance Requirements:			
Owners of all cars must meet state mandated insurance requirements for vehicles. The Northwest Missouri Model A Ford Club is not legally responsible for any expenses incurred due to accidents or injuries sustained in club sponsored events. This requirement shall remain in effect throughout the continued membership.			
Signature:			Date:
<input type="checkbox"/> Enclosed are my dues for membership year January 1 to December 31		\$25.00	
<input type="checkbox"/> Enclosed are my dues for partial year membership (Prorated per month; check with the membership director)		\$ _____	
<i>Please make checks payable to: NORTHWEST MISSOURI MODEL A FORD CLUB</i>			
<input type="checkbox"/> Send Newsletter by US Mail		<input type="checkbox"/> Email attachment to save the club postage	
Mail this form to:			
Robert Martin, Treasurer Northwest Missouri Model A Ford Club 6968 SE Horseshoe Drive Holt, Missouri 64048			



For Sale / Wanted To place an ad send your information to swinkinhofer @Hotmail.com, or mail to Sherry Winkinhofer

As a service to our members, the area Model A clubs have decided to share our classified ads sections! (this will include Model A specific items only.) Ads will run approximately 3 months unless we are notified that the item is still available.

For Sale: 1973 Red Phaeton for sale: 1 owner, automatic transmission. Really clean, appraised at \$20,000.

Contact: Chet Atkinson 816-813-8548



For Sale: Rear Bumpers for a 1931 slant windshield. \$275

Contact: Junior Blakley 816-289-2875 (NWMO 09/22)

For Sale: 1929 Ford Sport Coupe. Fully restored with 2 side mount tires, rumble seat, & new trunk.\$15,000.

Contact: Nora 515-289-2624 (9/23.)

For Sale: 1980 SHAY DELUXE ROADSTER. Dual side mount spares, many extras, manual transmission, great condition, road ready, 14.8K miles \$20,000

Contact: Kim Rader. 1-620-635-5672. Atchison, Kansas



For Sale: Model A parts-I purchased Francis Grady's Model A parts. I would like to sell them.

Contact: Eric Seiler 316-641-0051 (ICT 10/23)

For Sale: 1928 Sport Coupe - No Rust, Arabian Tan - Copra Drab Trim, Body Off Restoration. Motor/Frame Number - Match. Lobner, Overhaul, Tires - Low Mileage, Wheels Powder Coated, \$15,000

Contact: Jim Davidson - (913) 402-2077 (POA 9/23)

For Sale: All new parts were purchased from Snyder's Antique Auto Parts: Block was bored to 80 thousands over standard, new rings, new pistons (balance on digital analytical balance), new stainless steel valve and two piece valve guides (valves and guides ground and fitted), main bearing and rods poured with new babbitt and line bored ,pins fitted (Paul' rod and bearing) (Rods balanced on digital analytical balance), new adjustable tappets, new head studs and nuts, new valve springs, Crank journals 10 thousands under (NAPA), Block boiled, bored and surfaced (NAPA), Block water jackets pressure tested SEPT '23 - no cracks. Included is an assembled short block with an engine pan without a head. All side panels .pipe and timing covers installed without gaskets. \$2800.00

Contact: Ed Jankowski 785-690-7170 home or 402-676-6951 cell (POA 10/23)

Lost or Found?

From Laura Talley—

Steve and I went to Lathrop's Antique days to man the service station during the kids day and the miniature service station that Gary Smith made is missing.

It has always been on the there. Does anyone know someone can solve the r



A Few Automobile Funnies!

A man drives into the service station and fills up with fuel. The cashier says I am think of buying one of those. What do you get to the gallon?

He replies: 4 MPG. The wife gets the other 20.

Frank & Ernest By Bob Thaves



● ● ● ●

AUTO COLOR

& EQUIPMENT

524 E. 23rd Street Independence, MO 64055

TOUCH UP Aerosols - Bottles

Computerized Color Match Available

PHONE: 816-254-5630

FAX: 916-254-5635

www.auto-color.com

BOB BOND'S ARTISTRY

www.bobbondart.com

- Pinstriping
- Lettering
- Graphics
- Gold Leafing



- Flames
- Airbrushing
- Logo Designing
- Automotive Art

816-554-1800

Lee's Summit, Missouri

BRATTON'S

ANTIQUÉ AUTO PARTS



800-255-1929 Phone

www.brattons.com

800-774-1930 Fax

1606 Back Acre Circle

Mount Airy, MD 21771

Your source for Quality Model A Ford Parts since 1976

"HAVE AN 'A' DAY"



Kelly A Lindeman

1-888-879-6453

email: mike@mikes-afordable.com

www.mikes-afordable.com



Specialising in 1928 - 1931 Model A Ford Parts

Tom Kautz
Owner

www.tomkautz.com

KAUTZ

Established 1916



*Electric
Auto Parts
Auto Glass*

Rebuilding Starters, Generators, and Alternators

6volt - 12 volt

920 Commercial St.

Atchison, KS 66002

Phone: (913) 367-1717

ERIC WENINGER
OWNER

2045 S BEDFORD ST
WICHITA, KS 67207

316-619-1821 CELL
316-685-2553 SHOP

www.modelmedic.com

modelamedicllc@sbcglobal.net

THE MODEL A MEDIC LLC



STOCKING A FULL LINE OF
NEW AND USED MODEL A FORD PARTS

SPECIALIZING IN FULL SERVICE REPAIRS,
ENGINE, DRIVE TRAIN, AND RESTORATION

**THE WORLD'S LARGEST SUPPLIER
OF 1909-31 FORD PARTS!**

We Feature American Made Parts

SNYDERS

ANTIQUÉ AUTO PARTS

12925 Woodworth Road ◊ New Springfield, OH 44443

Toll Free Ordering:

(888) 262-5712

On-Line Ordering:

snydersantiqueauto.com

New Products Added Daily!



FREE
Fully Illustrated
CATALOG
U.S. ONLY



Commercial advertising space is available for \$25 per year for a business card size space (approximately 2 x 4) or \$50 per year for a quarter page (approximately 4 x 4). These ads are also included on our website at www.nwmodela.com. For more info, contact us at nwmodelaclub@gmail.com

-Membership is Strongly Encouraged in Both of these Excellent National Organizations-



Model A Ford Club of America

Join on line at *MAFCA.COM*
~Membership Benefits~

The Restorer magazine • Technical Support • Local Chapters • National Meets • Era Fashion Guidelines
 • "How to Restore Series • Judging Standards and Restoration Guidelines

Dues per year are

U.S. Membership- \$50	Optional Initiation Package For New Members Only
Canada/Mexico Membership - \$60	
International Membership - \$70	

Make checks payable to Model A Ford Club of America

New Membership

1—Back issue of **The Restorer**
 1—MAFCA Lapel Pin
 1—MAFCA Decal
 1 0 Name Badge
 Only \$11 extra

Name _____

Spouse's Name _____

Address _____

City _____

State _____ Zip _____

Country _____ Telephone _____

Permission to publish my telephone number in future Membership Rosters? Yes: ___ No: ___

Return this Form and Payment to
MAFCA
 250 South Cypress • La Habra, CA 90631-5515
 (562) 697-2712 Monday - Friday from 10AM



Model "A" Restorers Club

6721 Merriman Rd, Garden City MI 48135
 (734) 427-9050 office
 (734) 427-9054 fax

Find Membership forms at <http://model-a-ford.org/>

Dues- New or Renewals () US Membership \$50.00
 () US Air Mail \$62.00 () Canada \$60.00 () International 70.00

**New Members Only- Partial Membership:
 J/A, S/O & N/D issues only!**

() US Membership 26.00 () US & Canada Air Mail \$36.00 () International \$44.00

IMPORTANT:

Make checks payable to Model "A" Restorers Club (M.A.R.C.)

All Memberships from outside the U.S. are to be remitted by International Money Orders in U.S. Funds (drawn on U.S. Bank) or credit card. And a personal check drawn on U.S. bank (U.S. funds must be stamped on check.)

With your membership you will receive a club membership I.D. card and the *Model "A" News*, our BI-monthly club magazine. In addition, each member is entitled to a free 40 word classified ad in each issue of our international publication, the *Model "A" News* (A good source of parts and information you may need for your car). _____

Address: _____

City: _____ State: _____ Zip: _____

I give permission to publish my phone number in the future MARC Membership Rosters:
 () Yes () No Phone: _____

I give permission to publish my email in the future MARC Membership Rosters:
 () Yes () No Email: _____

THE ROAD RUNNER

% SHERRY WINKINHOFER
 PO Box 172
 Table Rock NE 68447