



# The ROAD RUNNER



MAFCA Chapter

MAFCA "Newsletter of the Year 2019", MARC "Award of Excellence" 2019

MARC Region

## Officers

President:	Junior Blakley
Vice President:	Larry Harding
Secretary:	Jody Layne
Treasurer:	David Silvers
Activities/Tours :	<b>Steve Talley</b>
Technical:	Walt Jones
Concerns/Calling:	<b>Volunteer Needed!</b>
Membership/Public Relations:	Mary Lou Matteson
Merchandising:	Bill Matteson
Raffle:	Glenda Dunlop
Newsletter/Webmaster:	Sherry Winkinhofer
Property:	Lonie Hank
Director:	Loura Cook
Director:	Bill Skaggs

## Birthdays

Bob Dunham	04/19	Charles Goodwin	04/29
Mike Hoskins	04/22	Julie Buell	04/16
Tony Flieg	04/29	Julie Parnell	04/23

## Anniversaries

John & Janice Kunkle 04/25

## Monthly Meeting

### **April 5th Meeting!**

## Board Meeting

Social Distancing in Effect

### **April 15, 2021 via Zoom**

**If you would like to participate as a guest at the Board meeting, please contact Sherry for a Zoom Invite via email.**

**Model A Club Breakfast meetings are on the schedule! Social distancing, and masks will apply. All are welcome**

## Technical Meeting & Breakfast Club-KC

### **Big Biscuit in Liberty**

Please join us every Wednesday 7:00 am to "whenever" at the Liberty Corner Shopping Center, at 840 Hwy 291 (816-429-5314)

## Technical Meeting & Breakfast Club-St Joe

Every Monday 8:00-10:00 AM

Hy-Vee 201 North Belt Highway, St. Joseph

## Ice Cream & Socializing

Every Saturday evening 6:00 PM

Big Burger, 4700 NE Vivian Rd  
Kansas City, Mo. 64119

## **President's Comments:**

Ok, let's not forget April 5th! We will have our first monthly meeting in a year! That's a long time! There will be a lot of things to discuss. At the last Board meeting, tours and activities, the possibility of a club picnic this summer, and a rescheduled silent auction are just a few things to be talked about!

We still plan on taking all precautions to be safe. The Legion still has rules to follow per Clay County guidelines. Please wear a mask and social distance the best you can.

Dewayne Knott, of the American Legion, is helping organize a show in Smithville on April 24th. (Detail on page 5.) I would love for as many club members as possible to take part with their cars as can!

Several weeks again, I was watching a show on TV. It was where they were catching pythons out in a swamp. They designed all kinds of buggies to run thru that area. Then I saw a nicely painted-up buggy. I recognized it right off. It had a 30-31 cowl and radiator and it was powered by a nicely painted Model A motor. Now if only the Restorer could do an article on this swamp buggy because I would like to see and learn more about it! Even if it isn't as Henry made it, it's interesting!

Now I want to see as many members as possible in April. And let's continue having a good turnout into the rest of the year!

Junior Blakley, President

*"I finally figured out my body type. It's hourglass with extra minutes."*

## **Editor's Comments:**

Things seem to be turning the corner on this Covid thing, with shots becoming more and more accessible to all. We are cautiously returning to having meetings, following all pertinent social distancing guidelines.

If you are comfortable with this, please come and enjoy the April meeting. If you are still being cautious, it's understood, and we can all look forward to the time when we can all get together at a meeting without so much stress!

And of course, even if a meeting isn't your cup of tea, think about joining us for our first tour on April 17th, a socially distanced Shakedown Tour, ending with a sack lunch picnic! Things are slowly looking up, and I, for one, am thrilled! I don't get my second shot until the end of this month, so I will miss the April meeting myself, but I'm looking forward to being able to catch up with everyone at the tour and hopefully the May meeting!

The weather had been beautiful the last week, and I wish I had the Old Lady up here in Nebraska with me, or one Model A in each place! But since I don't, I'm looking forward to getting back to Missouri in time to take her out touring. I'm sure she's as tired of that garage as I am of staying home! Looking forward to seeing all my friends!

Happy A'ing  
Sherry Wink, Editor

**Notes from Northwest Missouri Model A Ford Club Board Meeting**  
**Thursday, March 18, 2021**  
**Via Zoom 7:00 p.m.**

Junior Blakley opened the meeting at 7:05pm.

**Attendance**- Junior Blakley, Larry & Jeanne Harding, Jody Layne, Dave Silvers, Walt Jones, Laura Cook, Mary Lou & Bill Matteson, Sherry Winkinhofer, Lonie Hank, Bill Skaggs, Chili Canida, and Steve Talley, via live meeting and zoom.

**First item on the agenda** - Resuming regular club meetings as of April. The board voted unanimously to have an April meeting at the American Legion Hall on Monday April 5, 2021 at 6:00pm with seated dining & CBC Compliance. Meeting to start at 7:00pm with no raffle. There will be no entertainment at this meeting, the feeling being that after a year of no meeting, members will be eager to catch up with each other. Vice President Larry Harding has planned a "Get Back Together Social". so we all can visit with everyone. Mary Lou volunteered to meet and greet members at the meeting.

**Treasurer's Report** - Dave Silvers reported - starting balance \$3,369.85 checking, \$10,024.05 savings. Income \$300.19, expenses \$192.60. Ending balances \$3,477.25 checking, \$10,024.24 savings, for a total revenue \$13,501.49. Motion to accept report as read was made by Laura Cook, seconded by Jody Layne. Dave also advised the bank (Community America) has started charging fees to bank there. After a discussion Dave volunteered to look into other banking options and will report his findings next board meeting. Thank you Dave for stepping up and look forward to your findings. A lengthy discussion was held regarding a 2021 budget to be finalized to be submitted to the membership. Bill Skaggs made a motion, seconded by Steve, to add the line items of entertainment and activities from the 2020 budget to the 2021 interim budget to be presented to the membership to be voted on for as final 2021 budget. Dave will work on getting a copy to Sherry to be printed in the next Road Runner.

**Activities/Tour** - We want to thank Steve, with assistance from Laura for filling in the Tour Director position. A discussion was held regarding rescheduling our silent auction to the September meeting, and setting a date and location for the Christmas party. The board wants to get input from the members at the April meeting. Jody reported that the Shake Down Tour is scheduled for April 17. The Platte City Friends of the Arts Tea Social is now a virtual event and scheduled for April 25. Junior advised there's a Missouri's 200th anniversary celebration being put on by the American Legion on April 24, look for more information under activities. Laura Cook is planning on a ladies event for May 15, details pending. Jody & Bill Skaggs have a poker run tour planned for May 22 see details pending under activities. Bill & Larry on planning the Club Picnic for June 26, further details still pending. We need some volunteers to help set up and take down so Larry & Jeanne don't get stuck with all the work, please consider helping.

**Technical Report** - Walt advised that he & Chili are putting a men's workshop together for May 15.

Concerns/Calling - This position is "STILL" open. We really need someone to help out... please reconsider helping your club out. Sherry reported that Terry Richardson was home and recovering nicely from a triple by-pass. Keep up the good work Terry.

**Merchandising** - Bill will have some merchandise at the meeting for members to see the new shirts & hats.

**Membership** - Mary Lou reported that almost everyone has renewed their membership. This is good to hear. She will also check with the Liberty library on when we will be able to hold our board meeting there.

Motion was made to adjourn by Jody Layne and seconded by Sherry Winkinhofer at 8:20pm

Submitted by Jody Layne

---

**MAFFI Newsletter Minute-January 2021**

**March 2021**

**Would You Like to Serve?**

The Model A Ford Foundation is always looking for individuals who love the Model A hobby and are interested in the history of the Era to serve on the MAFFI Board of Trustees. Briefly, the MAFFI board has the responsibility of overseeing the Model A Ford Museum at the Gilmore and encouraging Model A'ers around the country to support the museum through membership in MAFFI and through additional donations to museum operations or the museum Endowment Fund.

The Board meets once a year on the Thursday before Model A Day at the Gilmore which falls on the third Saturday of September. Attendance at the meeting and Model A Day is strongly encouraged. Meetings and business are also conducted through email and conference phone calls so a trustee must have access to a computer for email. We like to have representation on the board from all areas of the country. *We would like to also encourage women to serve on the board.*

A trustee serves for three years and is eligible to serve a second consecutive term if he or she desires. Trustees must be a member in good standing of MAFFI and we strongly encourage each trustee to support both national clubs, MAFCA and MARC through membership as well. We ask that while serving on the MAFFI Board, you do not run for or accept positions on another national club's board. If you think you may be interested in serving on the MAFFI Board, please contact our Executive Director, John Marshall ([ExecutiveDirector@maffi.org](mailto:ExecutiveDirector@maffi.org)), or John Begg ([President@maffi.org](mailto:President@maffi.org))

Marsha Quesnel, MAFFI Trustee  
**[clubcontact@maffi.org](mailto:clubcontact@maffi.org)**

## Activities

"Departure places and times for events will be published on the Web Site and Newsletter the month prior to the event".

### April 17th—Shakedown Tour

Meet at McDonalds in Smithville 9:00 AM leaving at 9:30 AM  
Bring lunch and chairs

### April 24th-200th Missouri Anniversary Celebration

Downtown Smithville 10-4  
See page 5 for details!

### April 25th—Virtual Tea

Platte City Friends of the Arts  
See below for more info

### MARC National Membership Meet 2021

April 9, 2021 – April 11, 2021 . Bay City, MI 48708  
For more info, contact: Curt Hillman  
(989) 860-1102 (989) 295-0856

### June 20-25th: MAFCA National Tour

"A" White Mountain Adventure".

Website: 2021mafcationaltour.com

Contact: Chair - Mark Smith - 603-544-2230 - Cell: 508-865-7806

### Save the Dates!

May 15th—Garage Day at Chili's  
May 15th—Ladies Event being planned  
May 22—Poker Run  
June 26th—Club Picnic

If you are planning on joining in on any of the tours or activities, please sign-up at the meeting and include your phone number. You can contact Steve or Laura at (816) 632-1776 Home, Steve (405) 922-6989 cell or Laura (816) 724-3235 cell. That way if an event has to be canceled or has a location or the schedule changed, they will do their best to make sure you are notified!

## APRIL MEETING—AFTER NO MEETINGS IN A YEAR, WE'RE SCHEDULED FOR APRIL 5TH FOR A TRIAL RUN!

The Board held a long discussion regarding this and the consensus was that 1) many of our members have had the opportunity to get the Covid-19 vaccine to make a return to meetings feasible, and 2) a number of members have asked for the meetings to start again. All social distancing rules are still in effect at the Legion, including the requirement to wear masks. Food will be available, but it will be table service as buffets are still not allowed.



## Sunshine/Concerns



Loura Cook is temporarily filling in for Etta as our Sunshine/Concerns lady! If you know anybody in need of a card or phone call, please let Loura know at (816) 632-1776 or [louracook35@gmail.com](mailto:louracook35@gmail.com)

## New Member Correction!

I goofed on a few numbers in new members Don and Mary Sedlacek's address and cell phone. Please correct in your roster!

The correct info is:

3611 Robin Lane  
Saint Joseph, MO 64506  
816-752-0484 (Don Cell)

## A Virtual Tea!

A new concept for this tea to move forward! Catered meals will be provided to each hostess who will have a decorated table in their home. Guests will be invited according to the socially distanced circle of the hostess. The event will be Zoom-ed to all participants with the home party being at the Eighteen Ninety farmhouse! Tickets are \$30 per person, \$50 for 2, \$80 for 4. This is a fundraiser for this group and our club

is sponsoring a table (maybe 2) purely for the fun it involves. (There is no cost to the club by the way!) It should be a unique event, and a little bit of break from the confines of Covid-19 isolation! Call Jody or Sherry for more information! And tickets!



## Volunteer still needed!

We have a vacancy on our Cares and Calling Board position. Etta Ridgeway has regrettably had to step down from this position. Loura Cook is filling in for the moment, but cannot continue with it long term. This is an important position, one that is part of the glue keeping our club together! Sunshine and Concerns sends thank you cards, get well and thinking of you cards, and keep track of birthdays or anniversaries!

Please consider stepping up and helping with this key position. The club needs you!

### Deadline for the Next Road Runner The 20th of the preceding month

Email to [swinkinhofer@hotmail.com](mailto:swinkinhofer@hotmail.com)  
Or mail to: Sherry Winkinhofer  
1459 Woodland Ave  
Liberty MO 64068

### Club Contact Information:

President Junior Blakley (816) 289-2875  
All Officers: [nwmomodelafordclub@gmail.com](mailto:nwmomodelafordclub@gmail.com)  
Publications: [nwmomodelafordclub@gmail.com](mailto:nwmomodelafordclub@gmail.com)  
816-519-2630

*Any articles or notes without a byline are written by your editor.*

Visit [www.nwmomodela.com](http://www.nwmomodela.com) today!

Please mail any info, pictures, questions & suggestions to:

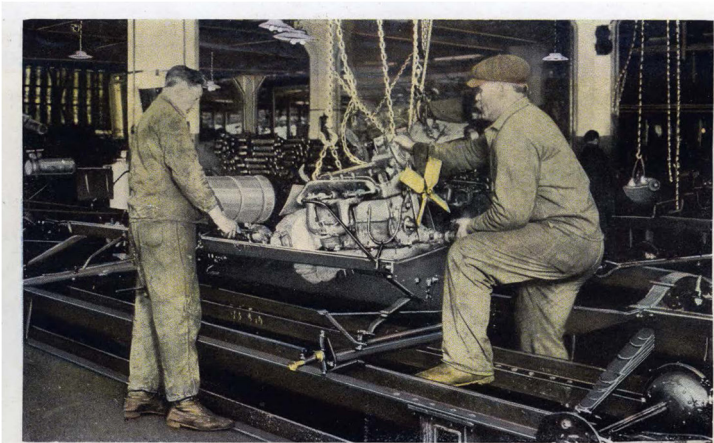
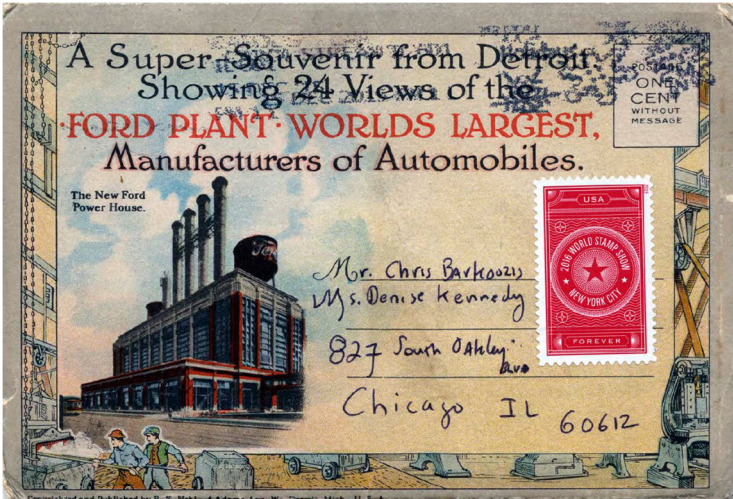
**NWMO Model A Ford Club**  
**PO Box 34**  
**Liberty MO 64069**

Or email:

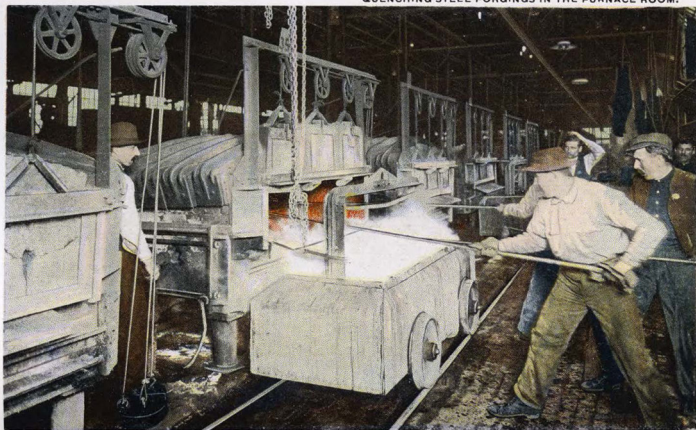
[nwmomodelafordclub@gmail.com](mailto:nwmomodelafordclub@gmail.com)



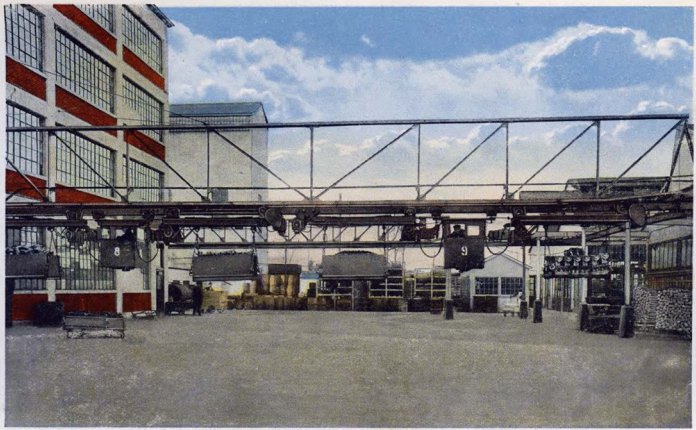
Clyde Pace submitted a great Postcard collection of the Ford Plant. It's from 1917, Model T era, but it's still fascinating stuff. Here are a few of the 24 pictures included:



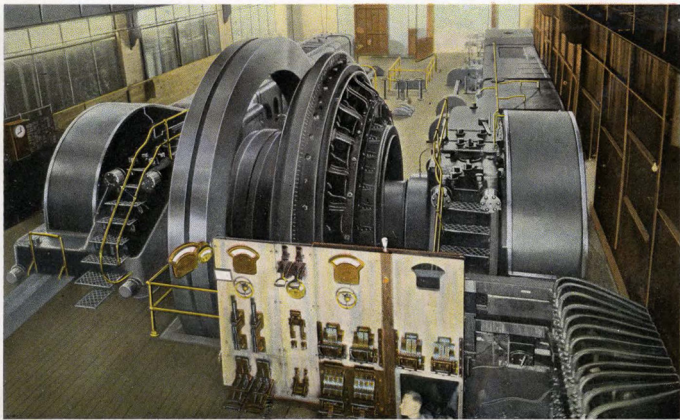
SETTING THE MOTOR, DURING THE FINAL ASSEMBLY.



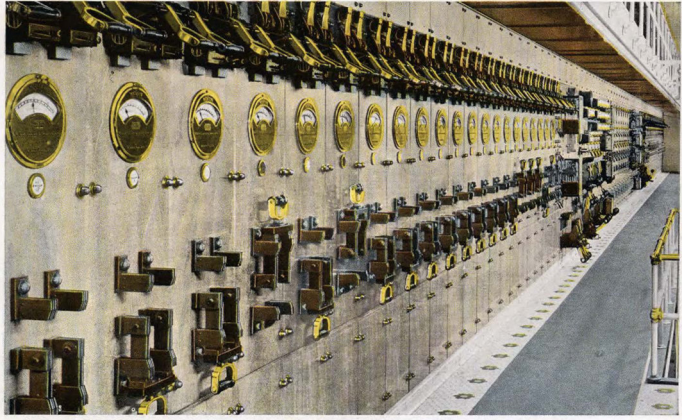
FORD HEAT TREATMENT GIVES WONDERFUL STRENGTH TO AXLES, STEERING RODS, GEARS, ETC.



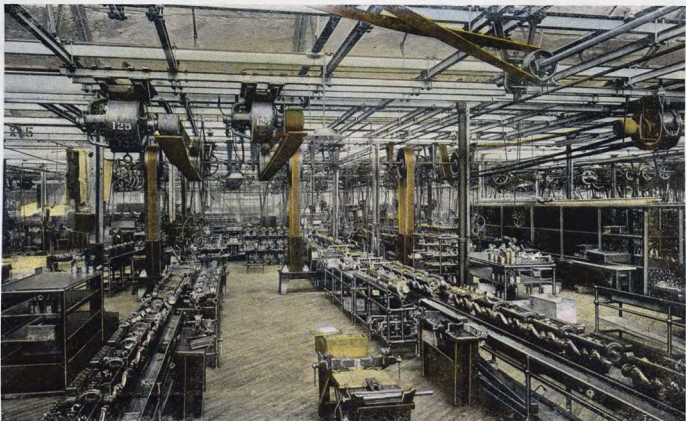
THERE ARE TWO MILES OF OVERHEAD MONORAIL TRACK IN THE FORD FACTORY.



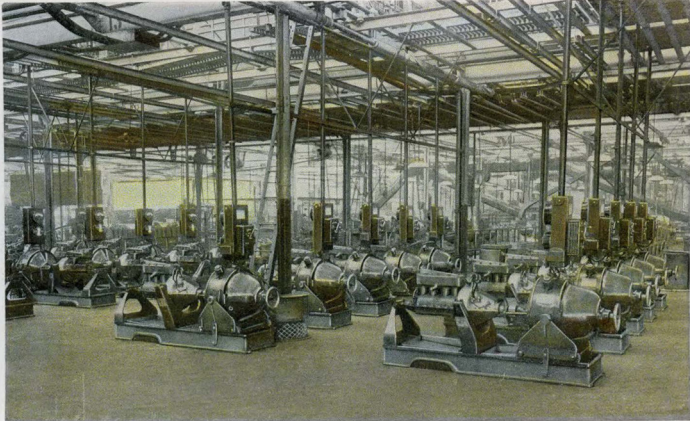
A 6,000 HORSE POWER GAS-STEAM ENGINE. THERE ARE SEVEN OF THESE AT FORD'S.



THE LARGEST DIRECT CURRENT CONTROL BOARD IN THE WORLD IN THE FORD POWER HOUSE.



MOVING CONVEYORS HASTEN THE MOTOR ASSEMBLY.



FORD MOTORS RECEIVE A THOROUGH TEST ON THE ELECTRIC "BLOCKS."



## Model A Quiz

Courtesy of Rick Black, MAFCA Webmaster

1. How many spokes are there on a Model A wheel (19" or 21")?
2. What do the numbers mean after ZENITH on Model A carburetors?
3. When introduced in 1928, how many colors were available on Model A's?
4. What was the most expensive model that sold for \$1200?
5. How many horsepower does the stock Model A engine produce?
6. The Model A was the first car to have safety glass where?
7. What weight of oil should be used in the steering box?
8. True or false: all Model A cars have a 103.5" wheelbase?
9. What year did stainless steel appear on Model A cars?
10. Who got Model A number 1?

(See answers on page 10)

## Regarding the article from the last Road Runner "Fair Forewarnings for Failing Fans"

Per an email from Steve Talley:

The two-bladed cast aluminum reproduction of the original fan blade that is now available from the catalog houses has inherent issues.

Putting an aluminum part married to a stainless steel shaft is not a happy match. I know...I have been through 2 of them.

Aluminum is too soft of metal to marry to the hard water pump shaft. Both times, the two-bladed fan wallowed out and the blade spun over the woodruff key. The vendor would not make good on the fan.

I do not recommend this replacement! More discussion should be held to considered how to solve the issues discussed in this article.

## **Smithville American Legion Event 200th Birthday Year of Missouri April 24th**

The Legion will be holding a celebration in downtown Smithville as an early celebration to the 200th birthday of Missouri as a state. The club has been invited to bring our cars to display around the square as part of this unique event! There will be antique tractor displays, a steam engine with saw mill, miniature steam engines and model trains also on display for the day!

Set up begins at 10 am with the event opening to the public from noon to 4pm. This is a free event for all!

The Legion has been a great supporter of our club for many years and do wonderful things for our community, and of course as support for all veterans. Let's do our part of supporting them as well, and show up with our cars for a great event!! See you there!

For more information, call the American Legion Post 58 at 816-532-8115

**AMERICAN LEGION**  
USMC ARMY NAVY USAF  
COAST GUARD

Serving ALL Veterans and  
the Community



Remembering  
Those Who Served

Smithville American Legion Post 58  
P.O. Box 158  
Smithville, Missouri 64089  
(816) 532-8115

LOCATED AT:

Hwy 92 & County Road DD

Find us on Facebook at:

<https://www.facebook.com/SmithvilleAmericanLegionPost58>

## **REMINDE YOU OF ANYONE YOU KNOW?**

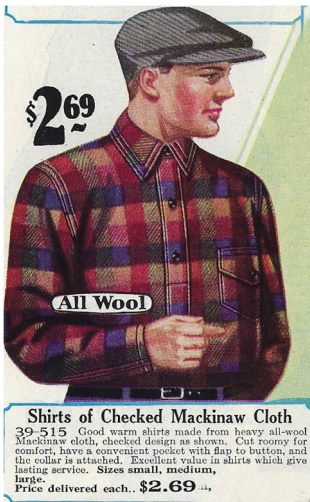




## Men's Work Shirts

By Sherry Wink

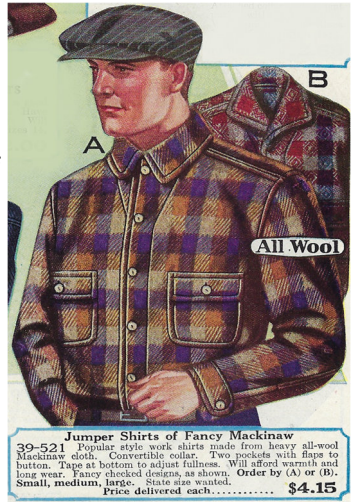
The work shirts worn in the Model A years were heavy duty and built to last under hard wear. The shirts pictured here are from The Robert Simpson Eastern Limited Fall and Winter 1928-29 catalog, so they are of warm, heavy fabric.



The top two pictures are of shirts of Mackinaw cloth which is a heavy and dense water-repellent woolen cloth, using a tartan pattern. It made a great outdoor garment, being quite wind-proof and durable non-fraying.

Flannel was also a popular option, and yes, they wore plaids and checks as well as solid color! The bottom row of pictures show many options of English wool flannel or Flannelette. From greys and browns, to reds and blues, there were quite a few choices. And let's not miss the checked versions second from the left!

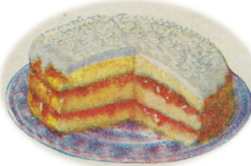
These shirts advertised an attached collar (vs. the removable ones that were still an option for dress shirts), and the pockets all have a flap, some with buttons for added security. One or two pockets were both commonly used. And interesting to note is the height of the pocket on the shirt. They were a bit lower than the pockets of today's shirts.



This recipe is from a collection found in "Woman's World" magazine January 1928. It was titled "Tempting Dishes for the Holiday Sweet Course." The article stated "*Raids by night and stealth by day will diminish the family cake supply when the young folk come home for the holidays.*"

### Coconut-Jelly Cake

- |                  |                       |
|------------------|-----------------------|
| 1 cup sugar      | 3 tsp baking powder   |
| 2 cups flour     | 4 egg yolks           |
| 3 egg whites     | 1 tsp vanilla extract |
| Small pinch salt | 1/2 cup butter        |
| 1 cup milk       | Small glass jelly     |



Cream butter and sugar. Sift baking powder and salt with flour. Add to butter and sugar alternately with spoonfuls of flour. Stir in beaten egg yolks until smooth, add stiffly beaten egg whites and vanilla. Grease jelly-cake tins lightly, sprinkle flour over surface. Bake cake in two or three layers 15 to 20 minutes in moderate oven. Turn out on sieve to cool. Put together with jelly—currant or apple.

### Frosting:

- |                     |                         |
|---------------------|-------------------------|
| 1 tsp butter        | 1 cup granulated sugar, |
| 1 cup water         | Pinch cream of tartar   |
| 1 cup coconut       | 1 egg white             |
| 1 tsp lemon extract | Pinch salt              |

Boil sugar and water 5 min., add butter and cream of tartar. Cook to soft ball. Beat white of egg and salt, turn hot syrup over it, beat in flavoring until thick. Spread on. Sprinkle coconut.

## Brands We Still Know By Sherry Wink

Nabisco baking company was formed in 1898. Famous first for their animal crackers, they introduced a new sandwich cookie in 1912. It was actually an imitation of a cookie called Hydrox made by Sunshine Biscuit Company.

The new cookie was originally called an Oreo Biscuit, but was changed to an Oreo Sandwich in 1921, Oreo Creme Sandwich in 1937, and finally to its current name of Oreo Creme Sandwich Cookie in 1974. There is no documentation of the origin of the name.

The first Oreos had a wreath design around the edge with the word Oreo in the center but the design was changed in 1924, and again in 1952. The 1952 design, incorporating the Nabisco logo, remains the current design.

Interesting note: A lemon flavored Oreo variety was introduced in 1920, but taken out of production in 1924.



1930 Ad



## Model A Mystery Part

### What is it?

Do you know?

For "Bragging Rights", Send an email to [nwmomodelafordclub@gmail.com](mailto:nwmomodelafordclub@gmail.com)  
Or to NWMO Model A Ford Club  
Box 34, Liberty MO 64069



Photo courtesy of Mike's A-Fordable  
Antique Auto

### Last Month's Mystery Part

This is an original powerhouse generator brush spring. It bears a strong resemblance to the window regulator spring, but has a longer tail.

Did you know?



Photo courtesy of Bratton's  
Antique Auto Parts

## Walt's Old Time Tech Tip

From the "Model A Torque", newsletter of the North Island Model A Ford Club—New Zealand,  
originally printed in the Nickle "A" News of Wisconsin:

Walt Jones, Tech Director

### Pinion Gear Removal!

by Tom Endy

Removing a Model A Ford pinion gear from the drive shaft is not as straightforward as it may appear. The pinion gear has an internal taper that matches the tapered end of the drive shaft and over the years the mating surfaces may have become jammed very tight together, much like a rear brake drum hub can become jammed tight to a rear axle.

The pinion gear can be removed from the drive shaft with a large gear puller and a small bearing puller. Place the drive shaft in a vice. Remove the cotter pin from the nut at the pinion end of the drive shaft. Using a 15/16 hex socket, back the nut off about 1/4 of an inch, but do not remove it. Place a small bearing puller around the drive shaft behind the pinion gear by sliding it on over the front end of the drive shaft until it is up against the threaded end of the pinion gear.

Using the gear puller, place the center point of the puller in the detent at the pinion end of the drive shaft. Hook the arms of the gear puller around the bearing puller and tighten until there is sufficient tension against the end of the drive shaft.

Smartly tap the end of the gear puller with a hammer. Alternately lighten the puller and tap the end until the pinion gear breaks loose from the taper on the end of the drive shaft. Remove the pinion gear nut and slide the pinion gear off the end of the drive shaft.

The photos show a block of steel with a hole bored through it instead of a bearing puller. Since I remove a lot of pinion gears, I made up this device, as it is more convenient to use. A small bearing puller will work just as well.

The gear puller shown was purchased from Sears years ago and was originally used for pulling flywheels off of Briggs & Stratton lawn mower engines.

The reason you do not want to remove the nut from the end of the drive shaft until after the pinion gear has broken loose is that the pinion gear may fly across the room when it breaks loose if the nut is not in place to prevent it.



# REPLACING A FRONT BRAKE TRACK ROLLER TRACK ASSEMBLY

By Gregg Rose

This is how I went about replacing the Roller Track Assembly—not a definitive guide, but if you're considering doing the same it might help!

**My brakes have been bit of a problem since I got the car on the road, so I decided to repair/replace most of the parts in the front brakes.**

The Roller Track was particularly worn and had been repaired in the past, so a new Roller Track was ordered.



## Step 1:

Disassemble the front brakes and take off the backing plate, then grind down the rivets on the back of the plate and punch out.



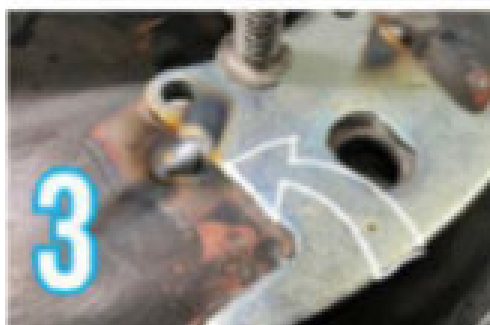
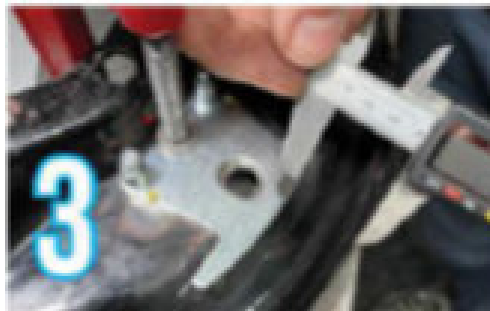
## Step 2:

Put the new rivets through the holes—we found that the rivets were a bit smaller than the originals so there was a bit of play—this makes positioning the Track a bit harder.



## Step 3:

Clamp the Track in position and make sure the distance along the edge of the backing plate is even—the large hole in the plate must be centered—just use some common sense when doing this—you'll see how the holes are aligned. We spent a fair bit of time getting this right. In the instructions it says put a bolt through one hole to keep the plate in place when installing the rivet—we decided to spot weld the Track—it doesn't get in the way of anything and it won't move when you bash those rivets in!

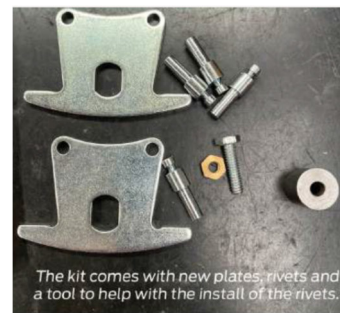


## Step 4:

Clamp the backing plate onto a bench, use the supplied tool to hold the rivet in place, then heat up rivet and peen over the end. Repeat for second rivet, then give it a coat of black paint and you're done! When re-installing shoes onto plate, make sure you use a brake centering tool—most important as you may need to bend the Roller Track for fine turning.



All done - thanks to Russell Boyle for helping with this install.







## For Sale / Wanted To place an ad send your information to [swinkinhofer@Hotmail.com](mailto:swinkinhofer@Hotmail.com), or mail to Sherry Winkinhofer

As a service to our members, the area Model A clubs have decided to share our classified ads sections! (this will include Model A specific items only.) Ads will run approximately 3 months unless we are notified that the item is still available.

**For Sale:** Door top cover plates (2) and door bottom patch panels (2) for 30-31 Tudor or cc pick up. All are new pieces with no rust

**Contact:** Roger Miller (515) 965-727 (CIMA 01/2021)

**For Sale:** Fully Restored 1929 Model A Roadster with rumble seat. Dark blue with gray interior and classic yellow wheels. All matching serial numbers. The engine is freshly rebuilt; bored and balanced with bearing inserts. Updated with adjustable rockers, modern valves and valve springs. The transmission is rebuilt 3-speed Snyder transmission. Interior wood replaced and new upholstery. Asking \$27,500.

**Contact:** Les Little at 402-223-9542 or [leslittle62@yahoo.com](mailto:leslittle62@yahoo.com). (CIMA 03/2021)

**For Sale:** 1930 Model A Family Sedan. Runs great, new interior. Black fenders, thorn brown body. New tires. Drives nice. \$16,000

**Contact:** Jerry Kluver (515) 975-0870 (CIMA 04/2021)

**For Sale:** 1928 Model A Roadster with rumble seat. Double side mount spare and trunk. \$16,500.

**Contact:** Herb Shafer (319) 537-1150. (CIMA 04/2021)

**For Sale:** At Grandpa's Garage, DeSoto Kansas. I have sold 15 cars, but still have 14 cars for sale. ALL CAR PARTS PRICE REDUCED!

**Contact:** Dean Weller 913-585-3326 Cell, 913-585-1313 Home  
CALL FOR AN APPOINTMENT,  
LET THE PHONE RING A LONG TIME (POA 01/2021)

**For Sale:** 1929 Tudor. New Paint, New Interior, Runs Great. \$10,000 OBO.

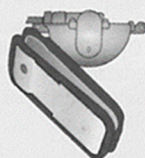
**Contact:** Dan Fischer (515) 571-0086. (CIMA 03/2021)

## Tiny Tips from The Restorer Magazine.doc - —..

shared by Rick Black, MAFCA Webmaster

### Tiny Tips From MAFCA Members

Submitted by Steve Gillie, Springboro, Ohio.  
Illustrated by Dick Lewis, Lawrenceburg, Indiana



#### Slow Vacuum Wiper Fix

Try taking the wiper apart and soak the paddle in automatic transmission fluid. The fluid will cause the paddle leather to swell making a tighter seal in the bowl.

#### Sticking Light Switch

If your light switch rubs the steering wheel while turning, try removing the horn rod and placing a thin flat washer on the rod. The spring on the bottom should compress enough to allow for this. If you are working alone, use a wooden yard stick across the steering wheel to hold down the horn button while you remove and replace the small horseshoe keeper on the bottom of the rod.

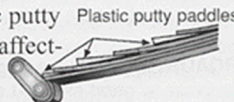


#### Fix Seat Springs

Roll up foam rubber and cram it into the center of each spring to make it more firm. A broken spring can be repaired by screwing another spring down into it.

#### Leaning Model A

Try raising the frame up so you can slide plastic putty paddles between the leaves of the spring on the affected side. Another way is to remove and disassemble the spring and reverse each leaf.



### Tiny Tips From MAFCA Members

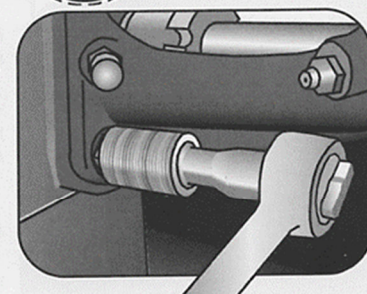
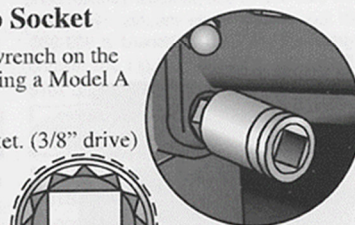
Submitted by Dick Przywitowski, LaFayette, Colorado  
Illustrated by Dick Lewis, Lawrenceburg, Indiana

#### Model A Water Pump Socket

It is difficult to get a socket wrench on the two bottom nuts when installing a Model A water pump

1. Take a standard 9/16" socket. (3/8" drive)
2. Grind down the outside circumference so as to fit the bottom nuts without binding.

3. You can do this on a lathe, grinder or sander, rotating the socket as you grind to get an even outside circumference.  
*Note:* Use a socket extension and a wooden dowel inserted in the socket to help support socket while grinding. Wear safety glasses!



If you have a helpful tip about Model A restoration or maintenance that you'd like to share with MAFCA members, please forward it to the MAFCA Office.  
250 S. Cypress, La Habra, CA 90631-5515 or e-mail: [restorer@mafca.com](mailto:restorer@mafca.com)

## A License Plate Mystery-Solved!

By Raul Salmon

We found my license plate number in Poplar Bluff. Unfortunately, the number is on a pair of 1930 Missouri plates which are on a 1930 Model A Coupe owned by a local doctor.

It appears the state issued my plate number in 1929 and reissued the same number again in 1930. Dr Dowd's paperwork made it to the DMV before mine. So, he got rights to that license number. The state's computer system cannot differentiate year, design and color of the plate. It goes only by number configuration.

The state can't register two plates with the same number. Dr Dowd is not interested in selling his plates. He recently got his plates through probate of a friend's estate, so they have sentimental value. Knowing that, I'm glad he got the plate number. My search for another 1929 Missouri plate has begun!



*A few tips found in the "Ford Torque", the newsletter of the Model A Ford Club of Victoria Inc. Australia*

### Lube info - The Missed Spot.

Learn something new every day] Last summer while on our weekly Sunday cruise, I noticed a slight rattle coming from under the hood of the A. It was one of those things that would stop when you tried to find it. It turned out to be in the distributor. So, after changing a loose rotor and a faulty cam, and getting nowhere, I decided to remove the distributor from the engine. Well, it was rusted in and wouldn't budge. After about 5 days and lots of WD-40, it finally came out. I took it apart, cleaned it and checked the bushings for wear. Luckily, there was very slight wear, and not enough to worry about. I oiled it up, and reinstalled it. It ran great, and quiet. I then talked to our Model A guru (Leonard Hammermeister) and he told me that when you oil your distributor through the sprout on the side, you are only getting the lower bearing surface. To lube the top one, you must remove the distributor cap and rotor. Then you can add oil through the hole in the top of the distributor shaft (if the drilled upper shaft and locking screw have been installed.) I talked with several members in the Club, and no one seemed to be aware of this. So, put this on your check list of things to remember when you lube your 'A.'



Jim Booth Script A Region MARC

### Overheating of Terminals/Cables In The Terminal Box

John Moorehead

The original terminal box in the Model A had the terminal screws molded within the plastic (Bakelite type material) box and could not move to come in contact the metal body. (Refer attached photograph) Also for securing the box to the body, brass inserts with internal threads were incorporated in the plastic box.

The replacement terminal box from suppliers has the terminal screws held in place with captive nut within the box molding. If these nuts are not positioned correctly at the time of installation or become loose, the head of the screw may move to contact the metal body causing arcing and overheating. The amount of movement is as little as 0.030 inch (0.75mm)

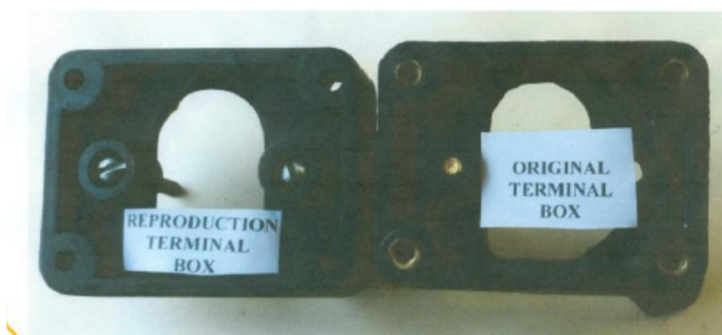
To ensure no electrical contact between the head of the screws and the metal body, rubber plugs or similar can be cut and fitted in the recess over the head of the screws. These insulating barriers can be held in place using an adhesive.

Another point to watch is the firmness of the four screws holding the terminal box to the body. As the screws tighten onto the plastic and not brass inserts as in the original box, they can become loose.

An additional precaution is to install an in-line fuse to protect the electrical system. Originally the Model A electrical wiring did not have any short circuit protection. The fuse mount is available from parts suppliers.

#### Model A Quiz Answers

1. 30
2. Zenith-1 means made by Zenith; Zenith-2 means made by Holley; Zenith-3 means made by Ford
3. 4
4. Town Car
5. 40
6. Windshield
7. 600
8. True
9. 1930
10. Thomas Edison, a good friend of Henry Ford





## A - Z Model A Parts - Zanes

Ron and Sondra Kester, Owners  
787 Central Street  
Glade, Kansas 67639  
Phone: 785-543-6729  
e-mail: 2officegirls@ruraltel.net

## BOB BOND'S ARTISTRY

www.  
bobbondart  
.com

- Pinstriping
- Lettering
- Graphics
- Gold Leafing
- Flames
- Airbrushing
- Logo Designing
- Automotive Art

816-554-1800

Lee's Summit, Missouri

## BRATTON'S ANTIQUE AUTO PARTS



800-255-1929 Phone  
www.brattons.com

800-774-1930 Fax  
1606 Back Acre Circle  
Mount Airy, MD 21771

*Your source for Quality Model A Ford Parts since 1976*

Tom Kautz  
Owner

www.tomkautz.com

**KAUTZ**  
Established 1916



Electric  
Auto Parts  
Auto Glass

Rebuilding Starters, Generators, and Alternators  
6volt - 12 volt

920 Commercial St.  
Atchison, KS 66002

Phone: (913) 367-1717

"HAVE AN 'A' DAY"



**Michael Butcher**

1-888-879-6453

email: mike@mikes-afordable.com  
www.mikes-afordable.com



*Specialising in 1928 - 1931 Model A Ford Parts*

*The Northwest Model A Ford Club does not personally endorse or guarantee any products or services advertised in this publication*

## AUTO COLOR & EQUIPMENT

524 E. 23rd Street

Independence, MO 64055

**TOUCH UP**

**Aerosols - Bottles**

Computerized Color Match Available

PHONE: 816-254-5630

FAX: 916-254-5635

www.auto-color.com

## CASPER Brake and Clutch

800 E. 17th, Kansas City, MO 64108

816-421-2780 email: [www.casperkc.com](http://www.casperkc.com)

**BRAKE AND CLUTCH SPECIALIST SINCE '29**

**Automotive-Agricultural-Industrial**

**"Friction Products to get you going, and  
Stop you when you get there!"**

**THE WORLD'S LARGEST SUPPLIER  
OF 1909-31 FORD PARTS!**  
*We Feature American Made Parts*



**ANTIQUE AUTO PARTS**

12925 Woodworth Road ♦ New Springfield, OH 44443

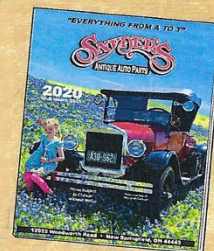
Toll Free Ordering:

**(888) 262-5712**

On-Line Ordering:

**snydersantiqueauto.com**

**New Products Added Daily!**



**FREE**  
Fully Illustrated  
**CATALOG**  
U.S. ONLY





**-Membership is Strongly Encouraged in Both of these Excellent National Organizations-**



### Model A Ford Club of America

Join on line at **MAFCA.COM**

~Membership Benefits~

The *Restorer* magazine • Technical Support • Local Chapters • National Meets • Era Fashion Guidelines  
• "How to Restore Series • Judging Standards and Restoration Guidelines

Dues per year are

U.S. Membership- \$50

Canada/Mexico Membership - \$60

International Membership - \$70

*Make checks payable to Model A Ford Club of America*

#### New Membership

#### Optional Initiation Package For New Members Only

1—Back issue of **The Restorer**

1—MAFCA Lapel Pin

1—MAFCA Decal

1 0 Name Badge

Only \$10 extra

Name \_\_\_\_\_

Spouse's Name \_\_\_\_\_

Address \_\_\_\_\_

City \_\_\_\_\_

State \_\_\_\_\_ Zip \_\_\_\_\_

Country \_\_\_\_\_ Telephone \_\_\_\_\_

Permission to publish my telephone number in future Membership Rosters? Yes: ☐ No: ☐

Return this Form and Payment to

MAFCA

250 South Cypress • La Habra, CA 90631-5515



### Model "A" Restorers Club

6721 Merriman Rd, Garden City MI 48135

(734) 427-9050 office

(734) 427-9054 fax

Find Membership forms at <http://model-a-ford.org/>

**2018 Dues- New or Renewals ( ) US Membership \$45.00**

( ) US Air Mail \$57.00 ( ) Canada \$55.00 ( ) International \$61.00

**New Members Only- Partial Membership:  
J/A, S/O & N/D issues only!**

( ) US Membership \$24.00 ( ) US & Canada Air Mail \$34.00 ( ) International \$42.00

#### IMPORTANT:

**Make checks payable to Model "A" Restorers Club (M.A.R.C.)**

All Memberships from outside the U.S. are to be remitted by International Money Orders in U.S. Funds (drawn on U.S. Bank) or credit card. And a personal check drawn on U.S. bank (U.S. funds must be stamped on check.)

With your membership you will receive a club membership I.D. card and the *Model "A" News*, our BI-monthly club magazine. In addition, each member is entitled to a free 40 word classified ad in each issue of our international publication, the *Model "A" News* (A good source of parts and information you may need for your car).

Address: \_\_\_\_\_

City: \_\_\_\_\_ State: \_\_\_\_\_ Zip: \_\_\_\_\_

I give permission to publish my phone number in the future MARC Membership Rosters:

( ) Yes ( ) No Phone: \_\_\_\_\_

I give permission to publish my email in the future MARC Membership Rosters:

( ) Yes ( ) No Email: \_\_\_\_\_

### THE ROAD RUNNER

% SHERRY WINKINHOFER

1459 Woodland Ave

Liberty MO 64068