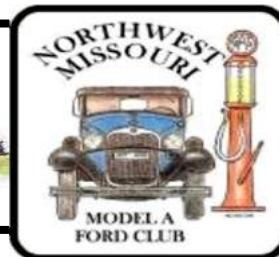


The ROAD RUNNER



MAFCA Charter

MAFCA "Newsletter of Distinction" 2018, MARC "Award of Excellence" 2018

MARC Region

Officers

President:	Bill Matteson
Vice President:	Junior Blakley
Secretary:	Mary Lou Matteson
Treasurer:	Nelson Young
Activities/Tours :	Jody Layne
Technical:	Walt Jones
Concerns/Calling:	Etta Ridgeway
Membership/Public Relations:	Lonie Hank
Merchandising:	Mary Ann Jones
Raffle:	Glenda Dunlop
Newsletter/Webmaster:	Sherry Winkinhofer
Property:	Steve Talley
Director:	Bill Skaggs
Director:	Loura Cook

Birthdays

Clyde Pace	11/01	Kay Chrane	11/05
Tom Williams	11/02	Daryl Powell	11/09
Pat Wishon	11/04	Jeanne Harding	11/14

Anniversaries

Malcolm & Sherri McIntyre	11/01
Harvey & Vicky Roseberry	11/08
Stan & Clea Mallory	11/28



Monthly Meeting

November 4, 2019

6:00 PM dinner available at special price, 7:00 PM meeting
The American Legion, 92 Hwy & DD, Smithville MO

Board Meeting

November 21, 2019

The 3rd Thursday of each month,
7:00 PM, Woodneath Library Center
8900 NE Flintlock Rd, Kansas City, MO 64157

Technical Meeting & Breakfast Club-KC

Big Biscuit in Liberty

Please join us every Wednesday 7:00 am to "whenever"
at the Liberty Corner Shopping Center, at 840 Hwy 291
(816-429-5314)

Technical Meeting & Breakfast Club-St Joe

Every Monday 8:00-10:00 AM
Hy-Vee 201 North Belt Highway, St. Joseph

Ice Cream & Socializing

Every Saturday evening 6:00 PM
Big Burger, 4700 NE Vivion Rd

Kansas City, Mo. 64119



President's Comments:

We've all heard the saying: "the more things change, the more they stay the same." Trite, but true, I suppose, mostly, but not always. The trees change color and signal that transition time is here, again. Time to bed down our Model A's, pay membership dues, reserve a place at the club Christmas party, enjoy the fall foliage tour or other last event...all things we take care of with regularity about now.

But one thing we do promises things won't stay the same. That's the election of officers at the club's November annual meeting. We look forward to new leaders and the fresh ideas, style, and challenges they'll bring to their important jobs. It's an exciting transition...one we embrace and support eagerly.

Conversely, change is hard when members go missing from our ranks. I can think of no greater example of faithful club membership than the late Joe Wishon. How often did we greet Joe and Pat at meetings, knowing it would have been easier had they not made the effort that night? Where will we find their likes tomorrow?

Bill Matteson, President

Whenever I think of the past, it brings back so many memories..

Editor's Comments:

Such a busy summer, it's hard to believe it's already the end of the touring season. Not that I haven't packed in a lot of Model A'ing in the last month! Even though the Old Lady is still in Nebraska waiting for exhaust repairs, I was able to take her out and about up there. A number of kids received some rides around town, with big grins on their face. The Old Lady and I also made a special appearance as Mrs. Clara Ford in the small town of Julian Nebraska, helping them to celebrate the restoration of their 1928 gas station. I actually met several MAFCA members there, and a few that had read our newsletter! Small world, isn't it! Julian was my birth-town, so I was honored to be able to participate in this small part of saving history.

Thanks to Bill and Mary Lou, I was able to take part in the Fall Foliage tour. I had several other offers of rides and actually Jody offered her car, but Bill and Mary Lou offered first, so I took them up on it! It was a beautiful drive in their Fordor, and I enjoyed being able to take some on-the-road pictures from the back seat!

I hope to see a lot of you at the Layne's on the second, Jody and I have already been cooking up some wonderful dishes, and it should be a fun day for everyone!



Happy "A"ing
Sherry Wink, Editor

NORTHWEST MO. MODEL A FORD CLUB MEETING

American Legion Hall, Smithville, Mo.

October 7, 2019 7:00 p.m.

Greeter: Loura Cook and Steve Talley

Meeting opening: President Bill led the Pledge of Allegiance. Following the pledge, he introduced Clyde Pace who presented an interesting history of Ft. Leavenworth with emphasis on the Command and General Staff training course, International Military Officer training, and how People-to-People supports the program.

Vice President: Junior Blakley continues to search for a club secretary for 2020. The 2020 officers are to be elected at the November 4 membership meeting.

Secretary Report: There being no corrections, the September 9 minutes, as printed in the October Road Runner, were declared approved by unanimous consent.

Treasurer Report: Opening Balance as of September 1, \$12,805.11; Income \$106.23; Expenses \$24.00; Ending Balance \$12,887.34 **Motion to accept the Treasurers Report,** by Sandy Hank, seconded by Clyde Pace, Motion passed.

Activities: October 10-13, Fall Festival event at the Lathrop antique car, tractor and engine grounds. October 19, Fall Foliage Tour, meet at Smithville McDonalds' 10:00 a.m.; October 27, John and Jody Layne's Open House, 2:00 -5:00 p.m., 15130 Lakeport Lane, Smithville, Mo. 64089; November 2, Ladies Social/Men's Garage day, Layne's home, 11:00 a.m. to 2:30 p.m.

Membership: Lonie reported 49 members and 2 guests in attendance.

Guest Mike Owen joined and reported he is hoping to find a Model A pickup for sale. Gary Smith introduced his daughter Cheryl Richgels, visiting from Ariz. It is time for membership dues. Forms were passed out to all with self-addressed envelopes to be mailed in. It was noted the Christmas Party charge, \$25.00 per person, can be submitted at the same time.

Merchandise: Mary Anne is available to take orders for various Model A apparel, and name tags. Name tags help everyone in becoming better acquainted.

Concerns/Calling: Etta reported the recent passing of long time member Joe Wishon. Rosemary Smith was welcomed following a lengthy absence due to illness. She expressed appreciation to members for their many messages of support during her time away. Etta asked those observing October birthdays and anniversaries to stand for recognition. Etta and Lyman are celebrating arrival of their first great grandchild.

Technical: Walt reported he now has his car up and road ready. Terry Richardson promised Mary Ann the car would be back home soon!

Newsletter/WebSite: Sherry reported that a youth services librarian had expressed her appreciation for information on automobile history she had researched through our website. Sherry added she took this as a positive example of value in our website.

Other: In other business, President Bill referred to a letter of thanks from the Model A Youth Restoration Award chair thanking our club for being one of 62 chapters donating to its youth restoration award program. In this connection, Fred Kiehl said his grandson and granddaughter are active Model A restorers--perhaps future candidates for the MAYRA youth awards? Bill said the menu for Christmas Party will be either beef brisket or BBQ chicken, with sides, for \$25.00 per person. Reservations for the December 8th event at Arley Barley Barn must be in by November 28.

Raffle: Sue Long was the lucky recipient of the raffle's \$25.00 gift certificate.

Attendance: 49 members, 2 guest.

Meeting Adjourned at 8:10 p.m.

Respectfully submitted by Mary Lou Matteson.

MAFFI Newsletter Minute October 2019

Model A Day 2019 was a success with many Unique and Original vehicles depicting our theme for this year. We had over 250 cars that came for the day and all enjoyed the Model A Museum as well as the many other museums on the Gilmore Campus.

Our Board of Directors had their annual meeting on Thursday prior to Model A Day and have laid the groundwork for a Strategic Plan to keep the museum interesting and entertaining for years to come. Our wish is for each and every one of you to come visit the museum. Your continued support is greatly appreciated. If you have not already done it, please renew your membership today and consider a year end monetary gift to our Endowment Fund which will ensure our museum will be there for generations to come.

Visit our website: www.maffi.org and follow the link to Membership. We now offer PayPal for your convenience.

Marsha Quesnel, MAFFI Trustee, clubcontact@maffi.org



Activities

"Departure places and times for events will be published on the Web Site and Newsletter the month prior to the event".

November 2nd-Ladies Social/Men's Garage Day

See details below!

November 11th—Veteran's Day parade

Leavenworth Kansas

You are invited to join the Plain Ol A's at 8:30 at the

McDonalds 3121 S 4th St, Leavenworth

Depart at 9:30 for parade lineup.

Lunch after parade—location determined day of parade

December 8th-Christmas Party

Details on Page 5

May 31, 2020 – June 5, 2020 – Regional Convention

Plain Ol A's Overland Park

If you are planning on joining in on any of the tours or activities, please sign-up at the meeting or let Jody Layne know in advance at (816) 225-7680. That way if an event has to be canceled or has a location or the schedule changed, we will do our best to make sure you are notified!

Next Meeting:

No official program—it's election time! Show and vote—make a difference! There will be plenty of time for socializing while votes are being counted!



October 5th-Trip To Gary and Rosemary Smith's and the Cainsville Car Show

Submitted by Laura Cook

It was a cold rainy day, and most people gave a pass to the Cainsville Car Show, but Jr. Blakley and Gary Smith don't give up that easily! They took their A's to Cainsville anyhow and said they enjoyed the day. The rain stopped in time for the wiener roast at the Smith's property, and Laura Cook and Steve Talley joined the group for the evening. It was a wonderful day, wish more of you could have made it!



Sunshine/Concerns (816) 719-9997



Etta Ridgeway is our Sunshine/Concerns lady! If you know anybody in need of a card or phone call, please let her know. And, if you just want to share the news of a happy event, such as a new grandbaby or a wedding, let her know that too!

Ladies Luncheon/ Men's Lunch

11:00 to 2:30 Saturday November 2nd.

John & Jody Layne's

15130 Lake Port Lane Smithville MO 64089



This is a "luncheon" for the ladies and a "lunch" for the guys!

Ladies, upstairs, Jody and her co-host Sherry (me) will have prepared a lovely and elegant luncheon for your enjoyment.

Guys, downstairs, there will be just "lunch", no frou-frou stuff for you! But John will happily show you his new shop and there will be lots of time to discuss Model A stuff!

If you are not on the signup list, please call Jody at 816-225-7680 or email Sherry at swinkinhofer@gmail.com and let us know if you are coming. It will help us plan how much food to prepare! Hope to see you there!



With Sympathy

Kenneth "Joe" Wishon, Weston, Missouri, passed away on Sept. 24, 2019 after a life full of love and laughter.

Our thoughts and prayers to his wife and fellow member Pat and also to their family. He will be missed.



Deadline for the Next Road Runner

The 20th of the preceding month

Email to swinkinhofer@hotmail.com

Or mail to: Sherry Winkinhofer

1459 Woodland Ave

Liberty MO 64068

Club Contact Information:

President Bill Matteson 816-781-4936

All Officers: nwmomodelaclub@gmail.com

Publications: nwmomodelaclub@gmail.com

816-519-2630

Any articles or notes without a byline are written by your editor.

Visit www.nwmomodela.com today!

Please mail any info, pictures, questions & suggestions to:

NWMO Model A Ford Club

PO Box 34

Liberty MO 64069

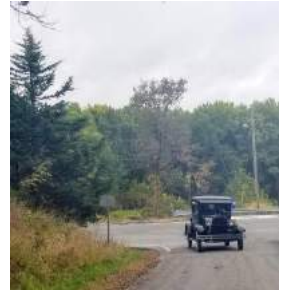
Or email:

nwmomodelaclub@gmail.com

Fall Foliage Tour October 19th

By Sherry Wink
Photos from Raul Salmon, Bill Matteson, & Sherry Wink

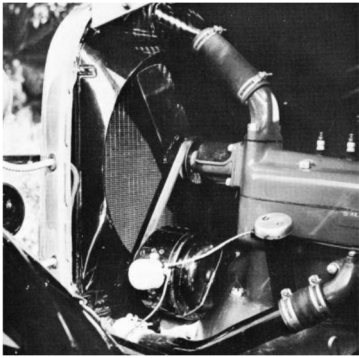
Rain threatened to cancel our tour in the morning, but by tour time it went away, and stayed away! The fall colors were just starting to turn, but it was still a very pretty drive! Plenty of Model A's and a few modern cars joined us on this tour through the back woods of Platte County, with a stop at the Jowler Creek Winery. A few members took advantage of their wine tasting menu, while others checked out their snacks and gift shop. Following more colorful backroad, lunch was had at Roxanne's in Platte City. It was delicious, and of course, some members ended their meal with their scrumptious pie!



A few pictures from Clarence Lawson from the Lathrop Antique Fairgrounds Living History Days, October 11-13th!

The Early Birds –Part 2

By H. S. 'DOC' KALINKA, as printed in the Restorer Magazine



The radiator shell lacing, or webbing, was not riveted onto the shell but was interwoven on the shell (like Model T radiator shells). Clutch and brake Pedals were completely smooth, with no ribbed pattern or raised boss on the ends to prevent your foot from slipping off. Upon casual inspection, one might think that these Pedals were worn smooth like a "A" with the odometer around a couple of times. Actually, these smooth clutch and brake pedals appeared on at least the first 70,000 or 80,000 Model A Fords.

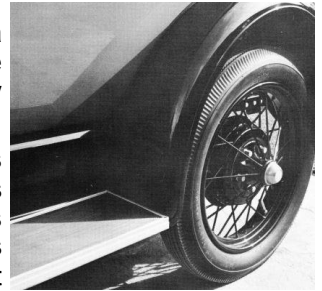
The "powerhouse" generator, which is considered by some as a trademark of the 1928's, actually appeared in three different forms. The very early A's had a cadmium plated adjusting arm which held the generator in position. The cutout was located on the side of this powerhouse generator. The most significant difference, however, was the finish of the back or end cover on the generator. The end cover was either unpainted aluminum or metal plated with dull nickel or cadmium, again unpainted.

Another early item was the ignition cable with the long, five-inch solid end; which screwed into the distributor. This solid portion was integral with and included the forged conduit clip (2" inch thick), through which it is bolted tight to a head bolt. A rectangular Briggs and Stratton patent plate is riveted to the solid end.

Other "early bird" features are the fan shroud, the offset starter rod, metal conduit, short choke rod, a smooth running board apron just forward of the rear fender (instead of the bump which clears the emergency brake rod), and a very subtle difference in the contour of the front fenders where they sweep down to the frame, etc.

These differences will be found when comparing the early 1928 with a later 1928, or a 1929. But as mentioned before, even the early ones will vary from car to car. Do not expect two cars of similar dates to look alike. We previously discussed one cause for this-the problem of factory changeover and parts shortages - but another factor would of course be the matter of parts replacement. When a car was returned to the Ford agency for service, or especially for repair, it would be modified with the latest part then being issued by the factory service department. Naturally, after thirty or forty years of wear and accumulated grime, that replacement part is going to look just as legitimate and original as all the other parts on the car.

One of the earliest cars in our questionnaire file is a Tudor belonging to Andy Baudino of Tustin, California. The engine number is A-1149. It has almost all of the "early bird" features described here and was used as the model to illustrate this article. Incidentally, it is beautifully restored; a first Place trophy winner at the Albuquerque National Meet and a recent "Award Winner" in The Restorer (Vol.11-6, page 5). The earliest early bird in our file is another beautifully restored trophy winner, and also from California; a Phaeton belonging to Joe Crum of Oceanside.



CHRISTMAS PARTY!

December 8th

Time to get your reservations in for this fun social event!

Cost is \$25 per person, due no later than November 24th.

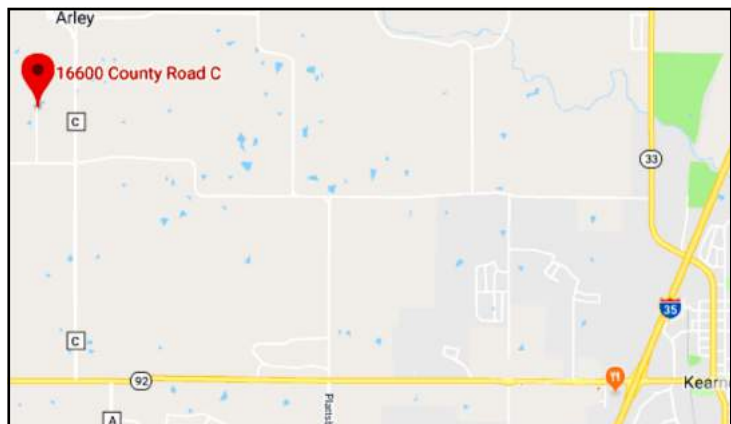
Checks can be mailed to:

NWMO Model A Ford Club, PO Box 34, Liberty MO 64069

**Please indicate your choice of
Brisket or Chicken
when making the reservation.**

The dinner will be at the newly enlarged Arley Barley Barn, 16600 County Road C, Kearney MO (on State Road C two miles north of Hwy 92; and/or 1/2 mile South of Arley Methodist Church). We will be gathering at 12:30, with the meal served at 1:00 p.m.

Please consider wearing your best vintage outfit to show off your Model A spirit! There will be lots of fun, a little bit of business, some great entertainment, and some great food!



Fur Garments

By Sherry Wink

We're all familiar with mink coats as being a very luxurious coat indeed. But did you know that mink was not the only fur, and not even the most popular fur in the Model A era? Here are a few varieties of furs in style and species that are to be found in a Gorrings 1928 Specialty catalog. Gorrings was a British company that catered to the rich, with an address on Buckingham Road. We can assume these were what the upper crust were wearing at the time!

There is a much more varied selection of fur than I would have expected. I was anticipating fox, sable, and even Coney. But muskrat, opossum, skunk, moleskin, and squirrel all surprised me. Interesting, there was no mention of mink at all. Amazing how fashion changes.

Please note that although I am highlighting mostly wraps and scarfs, that doesn't mean full-length coats were not also popular. I believe my catalog is more of spring offerings, with lighter garments being available.



"GRECY."

Choice White Arctic Fox Animal Scarf, with naturalised head and handsome brush. Also available in Café

A white Arctic Fox scarf, complete with head and tail.



"DUCIE."

Exceedingly becoming Scarf in Natural Brown Musquash of finest quality. Winter skins, with plaided pots, about 70 inches long, and lined gathered Crêpe

Musquash translates to muskrat! Note this is listed as a scarf not a stole.



"ROKREBY."

New Model in Choice Sable Kolinsky, a fur very much the vogue this season. Made from carefully selected skins, arranged so skillfully

A "Kolinsky" made of sable. Note the heads and tails.



F 73. Marabout Stole in good quality Feather, mounted on 7 in. Crêpe-de-Chine. 12 yds. 2 strands. Black or Natural.

Marabout (or marabou) is actually feathers.



"PAMELA."

Exceptional value in Real Silver Fox Animal Ties. Composed of one full-furred winter skin with naturalised head.

A silver fox, different than a Arctic fox.



"SELBY."

Fine Dark Natural Skunk Scarf, about 85 inches long and three strands wide, composed of selected Winter skins with handsome tails at ends. Lined rich Crêpe to tone. Very exceptional value

This one is from a skunk! Research shows it is from South America, not one of ours but I still can't imagine wearing it!



"MARGOT."

The Charm of Moleskin is beautifully expressed in this delightful Bridge Wrap. 27 inches deep at back. Composed of finest quality Scotch Moleskins, exquisitely worked with lovely real Fox Collar to tone. Lined rich Crêpe to tone.

How about moleskin for a "Bridge Wrap" to wear to that fancy dinner party?



"BLANTYRE."

Delightful Scarf in Choice Marten Blended Opossum, about 90 inches long. Only finest quality skins are used in this handsome Scarf, which is so perfectly blended that it can scarcely be distinguished from real Marten. Lined gathered Crêpe to tone.

Opossum. Dyed to look like marten, but still, opossum fur! Like those little guys you see dead on the road....



"MELFORT."

Chic Cape Wrap in Fine White Coney. Suitable for day or evening wear. Beautifully made from thin pliable pelts worked to represent Ermine, double fur collar and deep fringe round border. Lined rich Crêpe.

This beautiful "Cape Wrap" is made of white Coney. That translates to rabbit fur.



"FORMOSA."

Charming Scarf and Muff in finest Siberian Squirrel, blended the new Café au Lait shade and fashioned in the latest style of working this delightful little skin. Lined Satin Charmant to tone.

A scarf and muff set in Siberian Squirrel. In the new "Café au Lait" shade. I think that means coffee

This recipe is from a 1931 Armour's Ham advertisement for (yes, you guessed it) Spiced Baked Fixed Flavor Star Ham. Apparently this meant the ham was cured and processed in such a way that the flavor was consistent for any ham you bought. Seems this was always the case with other lesser brand hams!

Spiced Baked Fixed Flavor Star Ham

12 lb Fixed-Flavor Star Ham
1/2 cup water (in which ham was cooked)
1 tsp mustard
6 slices of canned pineapple
1/2 cup brown sugar
1/2 tsp paprika
Whole cloves
1/2 cup vinegar
6 prunes
6 maraschino cherries



Plunge ham into water, boil ten minutes, reduce heat, and simmer two hours. Remove rind. Sprinkle the fat surface with the mustard and paprika. Pour over the vinegar and water mixed and bake in a slow oven (300° F) for 1 1/2 hours. Baste frequently. Sprinkle fat surface with the brown sugar, dot with whole cloves. Continue baking without basting for 1 hour. Place slices of pineapple around ham and continue baking 1/2 hour. Garnish with pineapple rings, prunes and cherries. Serves 16 to 18.

Brands We Still Know

By Sherry

In August of 1910, John Valentine, a lawyer who was also a floral company owner put together a retailers cooperative of florists who agreed to work together on florist orders via the use of the telegraph. The business was called the Florists' Telegraph Delivery. Although Valentine lived in Denver, the new company was based in Detroit, Michigan and then moved to Southfield, Michigan prior to its move to Downers Grove.

The company started with 13 florists and by end of 1929, the group had grown to over 5000 locations. In 1912, a new logo featuring Mercury, the mythical messenger o the gods was introduced, to emphasize the speed of delivery. The logo was copyrighted in 1929. In 1965 the official name was changed to "Florists' Transworld Delivery."

Interesting note: Over the years, prominent entertainers have advertised for FTD, including Kim Novak, Elizabeth Taylor, Dale Evans, Rosemary Clooney, and Betty Davis.



1931 Ad

Model A Mystery Part

What is it?

Do you know?

For "Bragging Rights", Send an email to
nwmomodelafordclub@gmail.com
Or to NWMO Model A Ford Club
Box 34, Liberty MO 64069



Photo courtesy of Bratton's
Antique Auto Parts

Last Month's Mystery Part

This is a "Pinion Bearing Nut."
The ears of this washer get bent
around the pinion bearing nut to
secure them in place.



Did you know?

Photo courtesy of Snyder's
Antique Auto Parts

Walt's Old Time Tech Tip

This article was originally found in the October 2019 issue of The **TAILLIGHTER**, the official publication of the Western Lake Erie Region M.A.R.C.

Tightening Nuts and Bolts...

Written by Joe Fox

I recently got a second reminder of what may not be common knowledge, so I thought I would share it with y'all. A while back, when servicing my (modern) car, I found the lug nuts to be difficult to remove due to rust buildup, so I applied a bit of anti-seize lube to the studs. They went back on much better! However, when I later took the car in for new tires, I was told by the attendant that he had to clean the grease off the studs & lugs in order to get a good torque reading! Oops! Lesson learned... maybe...

While reading through the latest on-line issue of MAFCA's monthly newsletter, I was again reminded of the proper technique for tightening (torqueing) nuts and bolts. Keep in mind you shade-tree mechanics... this applies to modern stuff too! Thanks to Jim Cannon for this info...

Torque is a measure of the twisting force on something, like a nut or a bolt. When you tighten a nut, you are actually stretching the bolt or stud that the nut is turning on. It is the stretch of the bolt or stud that provides the strong "clamping force" that holds everything together tightly. Overtightening can cause breakage, e.g. if a stud/bolt is weak due to age or corrosion.

While Ford did not publish torque values in the Model A era, this information is now readily available and should be followed. Published torque values are for tightening a nut or bolt with clean, dry threads. Remove rust with a wire brush, and wipe the parts dry. Don't apply oil or anti-seize. Use a torque wrench, and when you reach the desired torque, stop tightening! (If you need to insert a cotter pin, keep tightening the nut just far enough to slip the pin in.)

If you lubricate the threads, it will be too easy to turn the nut as you torque it. Thus, when you stop at your target torque (say 55 ft-lbs. for a head nut) you will have stretched the bolt or stud more than 2 times as far as with dry threads. This will be like over-torqueing the nut and can result in the stud or bolt breaking, the stud pulling out of the block, or the head or block cracking. That will surely ruin your day!

Model A Recommended Torque Values

Bolt Location	Bolt Size	Tensile Strength psi	Grade	Torque ft. lbs.	Remarks
Differential Carrier Assy	3/8-24	74,000	2	20	Low Carbon Steel (Original Model A)
Axle Housing-to-Banjo Bolts	3/8-24	74,000	2	20	Low Carbon Steel
Torque Tube-to-Banjo Bolts	3/8-24	74,000	2	20	Low Carbon Steel
Rear Axle Nut	5/8-18	110,000		100	Hardened Axle Threads
Wheel Lug Nuts	--	--		64	
Pinion Bearing Preload Nut	--	--	New Bearing Used Bearing	20 in.lbs. 15 in.lbs.	Adjust nut for Torque inch lb. drag on Drive Shaft
Timing Gear Nut	--	--		100	
Pressure Plate Bolts	5/16-18	150,000	5	20	Replace with Grade 5
Head Nuts	7/16-20	150,000		55	
Manifold Nuts	7/16-20	150,000		45	
Flywheel Hsg-to-Block Bolts	7/16-14	120,000	5	50	Grade 5 or Better
Flywheel-to-Crank Bolts	7/16-20	120,000	5	50	Grade 5 or Better
Crankshaft Pulley Nut	-	-		50	
Main Bearing Bolts	1/2-20	-	-	80	
Rod Bearing Nuts	7/16-20	-	-	35	
Spark Plugs	-	-		25	

Originally printed in the of Service Hints article written by Les Andrews, March/April 1999 edition of The Restorer Magazine,



For Sale / Wanted To place an ad send your information to swinkinhofer@Hotmail.com, or mail to Sherry Winkinhofer

As a service to our members, the area Model A clubs have decided to share our classified ads sections! (this will include Model A specific items only.) Ads will run approximately 3 months unless we are notified that the item is still available.

Wanted: 30-31 AA dual wheel, flatbed or just a cab & chassis.

Contact: Bob DeLay 810-653-7861, Davison, Michigan
(NWMO 10/2019)

For Sale: 1930 Model A Coupe with rumble seat. \$16,500. This was Lee Felsberg's vehicle.

Contact: Randy Baker 816-261-2452 or Judy Baker 816-261-0018.
(NWMO 09/2019)



For Sale: Two Model A's

1929 Roadster—Beautifully restored with rumble seat, green with black fenders and cream wheels. This is an older restoration, with a full set of side curtains, turn signals, Stone Guard, and Wind wings. Included is a trunk rack (with a partially finished professionally made trunk, if buyer wants it). \$12,000

1931 Standard Coupe—Beautiful Restored with dual side mounted spares, no rumble seat. This car runs well, tires on ground are in good shape. The interior has a couple of rough spots, and some touch-up paint is needed on fenders. Car has new Stone Guard and original trunk rack. (A completed, professionally made trunk and five very good white wall tires and tubes are included, if buyer wants them).

Contact: Shirley Cormack 785-841-6033
kstrunkguy@yahoo.com (POA 11/2019)



For Sale: 1929 Tudor. New Paint, New Interior, Runs Great. \$13,500 OBO.

Contact: Dan Fischer @ (515) 571-0086. (CIMA 11/2019)

For Sale: 1931 Model A coupe, "1970s" paint restoration, solid body, runs, needs a horn, could use new wiring. \$15,000 OBO.

Contact: Sue Dreesman @ (319) 415-7725 (CIMA 11/2019)

For Sale: 1930 Model A Tudor, reasonable price, driver, good condition, located in Springdale AR.

Contact: Bill Dewberry chevyman49@yahoo.com

For Sale: Grandpa's Garage - DeSoto, Kansas Dean Weller is listing most of his cars for sale, including: 4 Model T Fords, 9 Model A Fords, 3 Chevrolets, 2 Buicks, 2 Cadillacs, 1 Lincoln, 1 Edsel, 1 Crosley, 1 Dodge, 1 DeSoto, 1 Star, 1 Freeway. Please call for an appointment - Open Tuesday, Friday, and Saturday

Contact: Dean Weller 913-585-3326/913-585-1313

For Sale: 1930 Ford Model A sedan, has been restored and is in great condition, considered a parade condition car. Runs great has always been stored in a private garage. Reason for selling is owner has moved to retirement center and kids are helping downsize the estate. Car is located in Omaha Nebraska. More pictures available upon request.

Contact: Terry at TerryMkt@cox.net
(NWMO 11/2019)



For Sale: 1929 Model A Roadster Pickup. Has flathead V 8, synchronized transmission, hydraulic brakes, 16 inch radial tires. All steel body and fenders.

Contact: Bill Skaggs 816 807 6300



(NWMO 09/2019)

For Sale: 1931 Coupe with Rumble Seat (older restoration). Black with 19" Red Wheels and White Walls, Radiator Stone guard, Ran 6 years ago.

Contact: Ryan Flattery @ (515) 447-0676 (CIMA 11/2019)

Full Jeweled Transmission

Used on Model A

Seven ball and roller bearings of best quality in clutch and transmission reduce friction and assure permanent alignment of gears and shafts.

Roller bearings used to carry countershaft and at junction of drive and spline shafts because they are best for radial load found here.

Drive and spline shafts rotate in ball bearings since they are most efficient for radial loads to which end thrust is added.

Gears and shafts are of chrome alloy steel forgings, heat treated for hardness.

Exceptionally easy shifting.



**Fordex
Data**

The article to the right was found in a book called the "Fordex Data" manual. It's a replication of the Ford sales training book offered in 1930. It's filled with lots of information on all body styles and accessories available during that time period. It was brought to my attention when Charlie Goodwin loaned me a copy, and then I just had to buy my own to keep. I found my copy at <https://www.mikes-afordable.com>.

It's that time of year again! Time to renew your membership! Please fill out this form and submit it prior to December 31st.



Northwest Missouri Model A Ford Club Membership Application

www.nwmomodela.com

<input type="checkbox"/> New Membership: <input type="checkbox"/> Renewal:			
Name:		Spouse/Partner:	
Address:			
City:		State:	Zip:
Home Phone:	Member Cell:	Other Cell:	
Member Email:		Other Email:	
Month/Day of Birth:	Anniversary:	Month/Day of Birth:	
Allow information for club roster or handbook yes <input type="checkbox"/> no <input type="checkbox"/>			
Model A Information			
Year:	Model:		
Indicate Condition:			
<input type="checkbox"/> Show <input type="checkbox"/> Restored <input type="checkbox"/> Being Restored <input type="checkbox"/> Drivable <input type="checkbox"/> Basket Case (but there's still hope!)			
Year:	Model:		
Indicate Condition:			
<input type="checkbox"/> Show <input type="checkbox"/> Restored <input type="checkbox"/> Being Restored <input type="checkbox"/> Drivable <input type="checkbox"/> Basket Case (but there's still hope!)			
Membership in National Organization			
<input type="checkbox"/> Model A Ford Club of America (MAFCA) <input type="checkbox"/> Model A Restorers Club (MARC)			
<i>National affiliation is strongly encouraged but not required</i>			
Membership in other local clubs			
<input type="checkbox"/> Members of Plain Ol' A's <input type="checkbox"/> Heart of America <input type="checkbox"/> Henry's A's <input type="checkbox"/> Other _____			
Auto Insurance Requirements:			
Owners of all cars must meet state mandated insurance requirements for vehicles. The Northwest Missouri Model A Club is not legally responsible for any expenses incurred due to accidents or injuries sustained in club sponsored events.			
Signature:			Date:
<input type="checkbox"/> Enclosed are my dues for membership year January 1 to December 31			\$25.00
<input type="checkbox"/> Enclosed are my dues for partial year membership (Prorated per month; check with the membership director)			\$_____
Please make checks payable to: NORTHWEST MISSOURI MODEL A FORD CLUB			
<input type="checkbox"/> Send Newsletter by US Mail		<input type="checkbox"/> Email attachment. Will save club postage	
Mail to:		NWMO Model A Ford Club Attn: Treasurer PO Box 34 Liberty, MO 64069	

Club Videos

Did you know the club has videos they can loan out? Walt has recently got approval to add a few new titles to this list also. There are also a few specialty tools available as well. Check with Walt Jones if you want to borrow any of these:

Model A Museum (A Stroll Through the Museum)
Replacing Your Model A Ford 1930 Pickup Roof
Rebuilding Model A 2-Tooth Steering
Installing Flat Head Ted's Brake Floater Kit
Setting Your Model A Ford Engine Bearing Clearances
How to Stop On a Dime
Radio in the Model A Days
Old Time Cars Parkville Parade July 4 2014
2000 Model A Hill Climb, Weston MO
2011 Lathrop Antique Car, Tractor and Engine Show
Road Side Troubleshooting
Carburetors and Carbohydrates
Gennin' Along with Lloyd & Floyd
Fahrenheit fright
Biography" Henry Ford—Tin Lizzy Tycoon



A few tools that might be of help:

Spoke straightener
Spider removal tool
Gas Gauge Removal Tool

RETIREMENT PLANNING – IS SOCIAL SECURITY ENOUGH FOR YOU?

While most of us realize the importance of retirement planning, sadly, it is something that many of us do not take seriously. Recent studies have shown that one in three Americans have no retirement saving and an additional 23% have less than \$10,000 in retirement savings. Only 53% of working Americans are covered by a retirement plan at work; 23% are covered by a pension and 40% have access to a retirement savings plan, such as a 401k. However, out of those 40%, only 44% actually take advantage of their retirement savings plan. The 47% of Americans not covered by a retirement plan at work have to take accountability of their retirement savings and, according to the studies, many simply do not.

Some people may simply think that they will live comfortably off their social security. Well, if you can maintain your lifestyle on the approximate 40% of their income that social security will likely replace, then you are correct! Frankly, I don't think many can. Plus, it is expected that without legislation, the Social Security Trust Fund will run out of money in 2034. At that time, benefits will have to be paid by the taxes paid by people in the workforce. With 10,000 baby boomers retiring per day, it is projected that these taxes will only support 79% of the benefits being paid. Which will lead to either reduced benefits, or more likely in my opinion, higher payroll taxes for employers and employees.

People often decide that they are going to draw social security as soon as they can, at 62. This is a decision not to be taken lightly. It first reduces your full retirement benefit by 26.67% for the rest of your life. It also reduces the amount your spouse can receive; if you hold off drawing social security until full retirement age (67 for those born in 1960 or later), the lower earning spouse is entitled to at least half of the benefit of the higher-earning spouse. Secondly, it limits the amount of additional income you can make to \$17,040 until you reach full retirement age. If you exceed that amount, \$1 of your social security benefit is taken away for every \$3 above the limit. It is quite likely that if you elect early retirement, you are quite likely exiting the work force in your peak earning years, potentially hindering your ability to live your retirement years in the lifestyle you would like.

A key consideration on whether to draw your social security early is your honest assessment of your longevity. The break-even on whether to draw social security at 62 vs. your full retirement age is approximately 17 years, or at 79. If you wait to draw social security until 70, the break-even is approximately 82. Let's use an example of a person eligible for \$25,000 of social security at 62. If he/she waits until full retirement age of 67, that benefit would be \$35,766 and at 70 it would be \$43,720 or a difference of \$18,720 a year. In addition, your spouse would receive half of that benefit if hers/his calculated benefit is less than that. Also, keep in mind that the surviving spouse bumps up to the decedent spouse's benefit if it is higher.

DAVID B. BLICKHAN, MBA
Branch Owner
P 816.746.0080 | M 816.694.2625
dblickhan@jcgrason.com
www.jcgrasonkansascity.com

J. GRASON
Helping Make Retirement Dreams a Reality!

The decision on when to begin drawing on social security is a personal one, yet one of the most important decisions you will make in your retirement planning. The government has tightened some loopholes on strategies to maximize your benefit but there are still options. If you would like to discuss your specific situation, please feel free to contact me at 816-746-0080 for a complimentary consultation.

Commercial advertising space is available for \$25 per annum for a business card size space (approximately 2 x 4) or \$50 per annum for a quarter page (approximately 4 x 4). These ads are also included on our website at www.nwmomodela.com For more info, contact us at nwmomodelaclub@gmail.com

The Northwest Model A Ford Club does not personally endorse or guarantee any products or services advertised in this publication

The ROAD RUNNER



MAFCA Charter

MAFCA "Newsletter of Distinction" 2018, MARC "Award of Excellence" 2018

MARC Region

Officers

President:	Bill Matteson
Vice President:	Junior Blakley
Secretary:	Mary Lou Matteson
Treasurer:	Nelson Young
Activities/Tours :	Jody Layne
Technical:	Walt Jones
Concerns/Calling:	Etta Ridgeway
Membership/Public Relations:	Lonie Hank
Merchandising:	Mary Ann Jones
Raffle:	Glenda Dunlop
Newsletter/Webmaster:	Sherry Winkinhofer
Property:	Steve Talley
Director:	Bill Skaggs
Director:	Loura Cook

Birthdays

Clyde Pace	11/01	Kay Chrane	11/05
Tom Williams	11/02	Daryl Powell	11/09
Pat Wishon	11/04	Jeanne Harding	11/14

Anniversaries

Malcolm & Sherri McIntyre	11/01
Harvey & Vicky Roseberry	11/08
Stan & Clela Mallory	11/28



Monthly Meeting

November 4, 2019

6:00 PM dinner available at special price, 7:00 PM meeting
The American Legion, 92 Hwy & DD, Smithville MO

Board Meeting

November 21, 2019

The 3rd Thursday of each month,
7:00 PM, Woodneath Library Center
8900 NE Flintlock Rd, Kansas City, MO 64157

Technical Meeting & Breakfast Club-KC

Big Biscuit in Liberty

Please join us every Wednesday 7:00 am to "whenever"
at the Liberty Corner Shopping Center, at 840 Hwy 291
(816-429-5314)

Technical Meeting & Breakfast Club-St Joe

Every Monday 8:00-10:00 AM
Hy-Vee 201 North Belt Highway, St. Joseph

Ice Cream & Socializing

Every Saturday evening 6:00 PM
Big Burger, 4700 NE Vivion Rd

Kansas City, Mo. 64119



President's Comments:

We've all heard the saying: "the more things change, the more they stay the same." Trite, but true, I suppose, mostly, but not always. The trees change color and signal that transition time is here, again. Time to bed down our Model A's, pay membership dues, reserve a place at the club Christmas party, enjoy the fall foliage tour or other last event...all things we take care of with regularity about now.

But one thing we do promises things won't stay the same. That's the election of officers at the club's November annual meeting. We look forward to new leaders and the fresh ideas, style, and challenges they'll bring to their important jobs. It's an exciting transition...one we embrace and support eagerly.

Conversely, change is hard when members go missing from our ranks. I can think of no greater example of faithful club membership than the late Joe Wishon. How often did we greet Joe and Pat at meetings, knowing it would have been easier had they not made the effort that night? Where will we find their likes tomorrow?

Bill Matteson, President

Whenever I think of the past, it brings back so many memories..

Editor's Comments:

Such a busy summer, it's hard to believe it's already the end of the touring season. Not that I haven't packed in a lot of Model A'ing in the last month! Even though the Old Lady is still in Nebraska waiting for exhaust repairs, I was able to take her out and about up there. A number of kids received some rides around town, with big grins on their face. The Old Lady and I also made a special appearance as Mrs. Clara Ford in the small town of Julian Nebraska, helping them to celebrate the restoration of their 1928 gas station. I actually met several MAFCA members there, and a few that had read our newsletter! Small world, isn't it! Julian was my birth-town, so I was honored to be able to participate in this small part of saving history.

Thanks to Bill and Mary Lou, I was able to take part in the Fall Foliage tour. I had several other offers of rides and actually Jody offered her car, but Bill and Mary Lou offered first, so I took them up on it! It was a beautiful drive in their Fordor, and I enjoyed being able to take some on-the-road pictures from the back seat!

I hope to see a lot of you at the Layne's on the second, Jody and I have already been cooking up some wonderful dishes, and it should be a fun day for everyone!



Happy "A"ing
Sherry Wink, Editor

NORTHWEST MO. MODEL A FORD CLUB MEETING
American Legion Hall, Smithville, Mo.
October 7, 2019 7:00 p.m.

Greeter: Loura Cook and Steve Talley

Meeting opening: President Bill led the Pledge of Allegiance. Following the pledge, he introduced Clyde Pace who presented an interesting history of Ft. Leavenworth with emphasis on the Command and General Staff training course, International Military Officer training, and how People-to-People supports the program.

Vice President: Junior Blakley continues to search for a club secretary for 2020. The 2020 officers are to be elected at the November 4 membership meeting.

Secretary Report: There being no corrections, the September 9 minutes, as printed in the October Road Runner, were declared approved by unanimous consent.

Treasurer Report: Opening Balance as of September 1, \$12,805.11; Income \$106.23; Expenses \$24.00; Ending Balance \$12,887.34 **Motion to accept the Treasurers Report**, by Sandy Hank, seconded by Clyde Pace, Motion passed.

Activities: October 10-13, Fall Festival event at the Lathrop antique car, tractor and engine grounds. October 19, Fall Foliage Tour, meet at Smithville McDonalds' 10:00 a.m.; October 27, John and Jody Layne's Open House, 2:00 -5:00 p.m., 15130 Lakeport Lane, Smithville, Mo. 64089; November 2, Ladies Social/Men's Garage day, Layne's home, 11:00 a.m. to 2:30 p.m.

Membership: Lonie reported 49 members and 2 guests in attendance.

Guest Mike Owen joined and reported he is hoping to find a Model A pickup for sale. Gary Smith introduced his daughter Cheryl Richgels, visiting from Ariz. It is time for membership dues. Forms were passed out to all with self-addressed envelopes to be mailed in. It was noted the Christmas Party charge, \$25.00 per person, can be submitted at the same time.

Merchandise: Mary Anne is available to take orders for various Model A apparel, and name tags. Name tags help everyone in becoming better acquainted.

Concerns/Calling: Etta reported the recent passing of long time member Joe Wishon. Rosemary Smith was welcomed following a lengthy absence due to illness. She expressed appreciation to members for their many messages of support during her time away. Etta asked those observing October birthdays and anniversaries to stand for recognition. Etta and Lyman are celebrating arrival of their first great grandchild.

Technical: Walt reported he now has his car up and road ready. Terry Richardson promised Mary Ann the car would be back home soon!

Newsletter/WebSite: Sherry reported that a youth services librarian had expressed her appreciation for information on automobile history she had researched through our website. Sherry added she took this as a positive example of value in our website.

Other: In other business, President Bill referred to a letter of thanks from the Model A Youth Restoration Award chair thanking our club for being one of 62 chapters donating to its youth restoration award program. In this connection, Fred Kiehl said his grandson and granddaughter are active Model A restorers--perhaps future candidates for the MAYRA youth awards? Bill said the menu for Christmas Party will be either beef brisket or BBQ chicken, with sides, for \$25.00 per person. Reservations for the December 8th event at Arley Barley Barn must be in by November 28.

Raffle: Sue Long was the lucky recipient of the raffle's \$25.00 gift certificate.

Attendance: 49 members, 2 guest.

Meeting Adjourned at 8:10 p.m.

Respectfully submitted by Mary Lou Matteson.

MAFFI Newsletter Minute October 2019

Model A Day 2019 was a success with many Unique and Original vehicles depicting our theme for this year. We had over 250 cars that came for the day and all enjoyed the Model A Museum as well as the many other museums on the Gilmore Campus.

Our Board of Directors had their annual meeting on Thursday prior to Model A Day and have laid the groundwork for a Strategic Plan to keep the museum interesting and entertaining for years to come. Our wish is for each and every one of you to come visit the museum. Your continued support is greatly appreciated. If you have not already done it, please renew your membership today and consider a year end monetary gift to our Endowment Fund which will ensure our museum will be there for generations to come.

Visit our website: www.maffi.org and follow the link to Membership. We now offer PayPal for your convenience.

Marsha Quesnel, MAFFI Trustee, clubcontact@maffi.org



Activities

"Departure places and times for events will be published on the Web Site and Newsletter the month prior to the event".

November 2nd-Ladies Social/Men's Garage Day

See details below!

November 11th—Veteran's Day parade

Leavenworth Kansas

You are invited to join the Plain Ol A's at 8:30 at the

McDonalds 3121 S 4th St, Leavenworth

Depart at 9:30 for parade lineup.

Lunch after parade—location determined day of parade

December 8th-Christmas Party

Details on Page 5

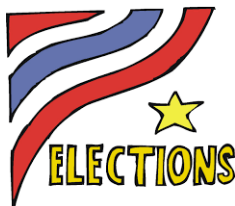
May 31, 2020 – June 5, 2020 – Regional Convention

Plain Ol A's Overland Park

If you are planning on joining in on any of the tours or activities, please sign-up at the meeting or let Jody Layne know in advance at (816) 225-7680. That way if an event has to be canceled or has a location or the schedule changed, we will do our best to make sure you are notified!

Next Meeting:

No official program—it's election time! Show and vote—make a difference! There will be plenty of time for socializing while votes are being counted!



October 5th-Trip To Gary and Rosemary Smith's and the Cainsville Car Show

Submitted by Laura Cook

It was a cold rainy day, and most people gave a pass to the Cainsville Car Show, but Jr. Blakley and Gary Smith don't give up that easily! They took their A's to Cainsville anyhow and said they enjoyed the day. The rain stopped in time for the wiener roast at the Smith's property, and Laura Cook and Steve Talley joined the group for the evening. It was a wonderful day, wish more of you could have made it!



Sunshine/Concerns (816) 719-9997



Etta Ridgeway is our Sunshine/Concerns lady! If you know anybody in need of a card or phone call, please let her know. And, if you just want to share the news of a happy event, such as a new grandbaby or a wedding, let her know that too!

Ladies Luncheon/ Men's Lunch

11:00 to 2:30 Saturday November 2nd.

John & Jody Layne's

15130 Lake Port Lane Smithville MO 64089



This is a "luncheon" for the ladies and a "lunch" for the guys!

Ladies, upstairs, Jody and her co-host Sherry (me) will have prepared a lovely and elegant luncheon for your enjoyment.

Guys, downstairs, there will be just "lunch", no frou-frou stuff for you! But John will happily show you his new shop and there will be lots of time to discuss Model A stuff!

If you are not on the signup list, please call Jody at 816-225-7680 or email Sherry at swinkinhofer@gmail.com and let us know if you are coming. It will help us plan how much food to prepare! Hope to see you there!



With Sympathy

Kenneth "Joe" Wishon, Weston, Missouri, passed away on Sept. 24, 2019 after a life full of love and laughter.

Our thoughts and prayers to his wife and fellow member Pat and also to their family. He will be missed.



Deadline for the Next Road Runner

The 20th of the preceding month

Email to swinkinhofer@hotmail.com

Or mail to: Sherry Winkinhofer

1459 Woodland Ave

Liberty MO 64068

Club Contact Information:

President Bill Matteson 816-781-4936

All Officers: nwmomodelaclub@gmail.com

Publications: nwmomodelaclub@gmail.com

816-519-2630

Any articles or notes without a byline are written by your editor.

Visit www.nwmomodela.com today!

Please mail any info, pictures, questions & suggestions to:

NWMO Model A Ford Club

PO Box 34

Liberty MO 64069

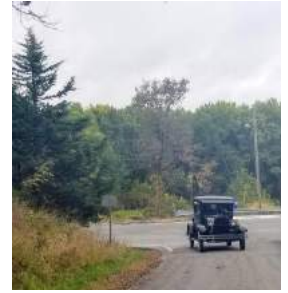
Or email:

nwmomodelaclub@gmail.com

Fall Foliage Tour October 19th

By Sherry Wink
Photos from Raul Salmon, Bill Matteson, & Sherry Wink

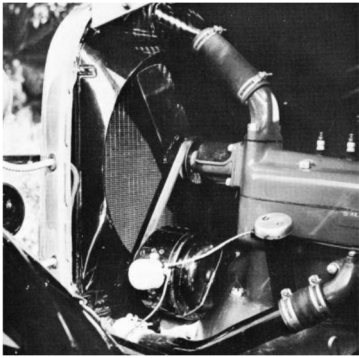
Rain threatened to cancel our tour in the morning, but by tour time it went away, and stayed away! The fall colors were just starting to turn, but it was still a very pretty drive! Plenty of Model A's and a few modern cars joined us on this tour through the back woods of Platte County, with a stop at the Jowler Creek Winery. A few members took advantage of their wine tasting menu, while others checked out their snacks and gift shop. Following more colorful backroad, lunch was had at Roxanne's in Platte City. It was delicious, and of course, some members ended their meal with their scrumptious pie!



A few pictures from Clarence Lawson from the Lathrop Antique Fairgrounds Living History Days, October 11-13th!

The Early Birds –Part 2

By H. S. 'DOC' KALINKA, as printed in the Restorer Magazine



The radiator shell lacing, or webbing, was not riveted onto the shell but was interwoven on the shell (like Model T radiator shells). Clutch and brake Pedals were completely smooth, with no ribbed pattern or raised boss on the ends to prevent your foot from slipping off. Upon casual inspection, one might think that these Pedals were worn smooth like a "A" with the odometer around a couple of times. Actually, these smooth clutch and brake pedals appeared on at least the first 70,000 or 80,000 Model A Fords.

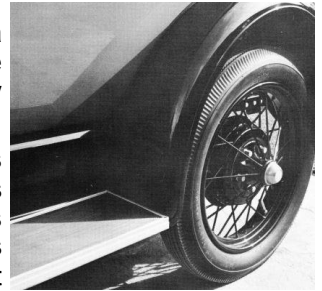
The "powerhouse" generator, which is considered by some as a trademark of the 1928's, actually appeared in three different forms. The very early A's had a cadmium plated adjusting arm which held the generator in position. The cutout was located on the side of this powerhouse generator. The most significant difference, however, was the finish of the back or end cover on the generator. The end cover was either unpainted aluminum or metal plated with dull nickel or cadmium, again unpainted.

Another early item was the ignition cable with the long, five-inch solid end; which screwed into the distributor. This solid portion was integral with and included the forged conduit clip (2" inch thick), through which it is bolted tight to a head bolt. A rectangular Briggs and Stratton patent plate is riveted to the solid end.

Other "early bird" features are the fan shroud, the offset starter rod, metal conduit, short choke rod, a smooth running board apron just forward of the rear fender (instead of the bump which clears the emergency brake rod), and a very subtle difference in the contour of the front fenders where they sweep down to the frame, etc.

These differences will be found when comparing the early 1928 with a later 1928, or a 1929. But as mentioned before, even the early ones will vary from car to car. Do not expect two cars of similar dates to look alike. We previously discussed one cause for this-the problem of factory changeover and parts shortages - but another factor would of course be the matter of parts replacement. When a car was returned to the Ford agency for service, or especially for repair, it would be modified with the latest part then being issued by the factory service department. Naturally, after thirty or forty years of wear and accumulated grime, that replacement part is going to look just as legitimate and original as all the other parts on the car.

One of the earliest cars in our questionnaire file is a Tudor belonging to Andy Baudino of Tustin, California. The engine number is A-1149. It has almost all of the "early bird" features described here and was used as the model to illustrate this article. Incidentally, it is beautifully restored; a first Place trophy winner at the Albuquerque National Meet and a recent "Award Winner" in The Restorer (Vol.11-6, page 5). The earliest early bird in our file is another beautifully restored trophy winner, and also from California; a Phaeton belonging to Joe Crum of Oceanside.



CHRISTMAS PARTY!

December 8th

Time to get your reservations in for this fun social event!

Cost is \$25 per person, due no later than November 24th.

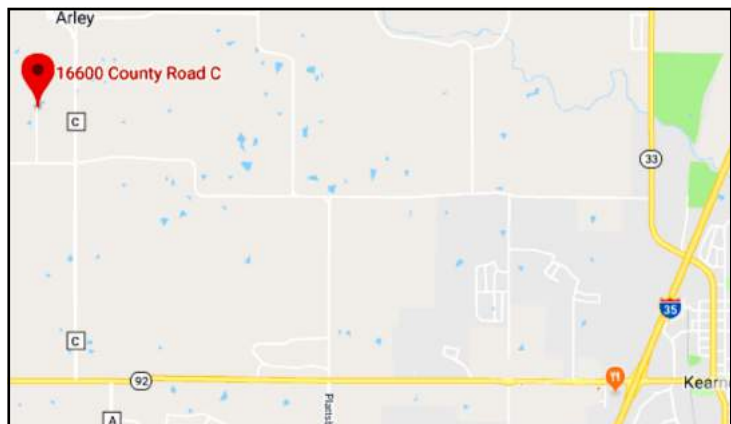
Checks can be mailed to:

NWMO Model A Ford Club, PO Box 34, Liberty MO 64069

**Please indicate your choice of
Brisket or Chicken
when making the reservation.**

The dinner will be at the newly enlarged Arley Barley Barn, 16600 County Road C, Kearney MO (on State Road C two miles north of Hwy 92; and/or 1/2 mile South of Arley Methodist Church). We will be gathering at 12:30, with the meal served at 1:00 p.m.

Please consider wearing your best vintage outfit to show off your Model A spirit! There will be lots of fun, a little bit of business, some great entertainment, and some great food!



Fur Garments

By Sherry Wink

We're all familiar with mink coats as being a very luxurious coat indeed. But did you know that mink was not the only fur, and not even the most popular fur in the Model A era? Here are a few varieties of furs in style and species that are to be found in a Gorrings 1928 Specialty catalog. Gorrings was a British company that catered to the rich, with an address on Buckingham Road. We can assume these were what the upper crust were wearing at the time!

There is a much more varied selection of fur than I would have expected. I was anticipating fox, sable, and even Coney. But muskrat, opossum, skunk, moleskin, and squirrel all surprised me. Interesting, there was no mention of mink at all. Amazing how fashion changes.

Please note that although I am highlighting mostly wraps and scarfs, that doesn't mean full-length coats were not also popular. I believe my catalog is more of spring offerings, with lighter garments being available.



"GRECY."

Choice White Arctic Fox Animal Scarf, with naturalised head and handsome brush. Also available in Café

A white Arctic Fox scarf, complete with head and tail.



"DUCIE."

Exceedingly becoming Scarf in Natural Brown Musquash of finest quality. Winter skins, with pliable pelts, about 70 inches long, and lined gathered Crêpe

Musquash translates to muskrat! Note this is listed as a scarf not a stole.



"ROKERY."

New Model in Choice Sable Kolinsky, a fur very much the vogue this season. Made from carefully selected skins arranged so skillfully

A "Kolinsky" made of sable. Note the heads and tails.



F 73. Marabout Stole in good quality Feather, mounted on 7 in. Crêpe de Chine. 12 yds. 2 strands. Black or Natural.

Marabout (or marabou) is actually feathers.



"PAMELA."

Exceptional value in Real Silver Fox Animal Ties. Composed of one full-furred winter skin with naturalised head.

A silver fox, different than a Arctic fox.



"SELBY."

Fine Dark Natural Skunk Scarf, about 85 inches long and three strands wide, composed of selected Winter skins with handsome tails at ends. Lined rich Crêpe to tone. Very exceptional value

This one is from a skunk! Research shows it is from South America, not one of ours but I still can't imagine wearing it!



"MARGOT."

The Charm of Moleskin is beautifully expressed in this delightful Bridge Wrap. 27 inches deep at back. Composed of finest quality Scotch Moleskins, exquisitely worked with lovely real Fox Collar to tone. Lined rich Crêpe to tone.

How about moleskin for a "Bridge Wrap" to wear to that fancy dinner party?



"BLANTYRE."

Delightful Scarf in Choice Marten Blended Opossum, about 90 inches long. Only finest quality skins are used in this handsome Scarf, which is so perfectly blended that it can scarcely be distinguished from real Marten. Lined gathered Crêpe to tone.

Opossum. Dyed to look like marten, but still, opossum fur! Like those little guys you see dead on the road....



"MELFORT."

Chic Cape Wrap in Fine White Coney. Suitable for day or evening wear. Beautifully made from thin pliable pelts worked to represent Ermine, double fur collar and deep fringe round border. Lined rich Crêpe.

This beautiful "Cape Wrap" is made of white Coney. That translates to rabbit fur.



"FORMOSA."

Charming Scarf and Muff in finest Siberian Squirrel, blended the new Café au Lait shade and fashioned in the latest style of working this delightful little skin. Lined Satin Charmant to tone.

A scarf and muff set in Siberian Squirrel. In the new "Café au Lait" shade. I think that means coffee

This recipe is from a 1931 Armour's Ham advertisement for (yes, you guessed it) Spiced Baked Fixed Flavor Star Ham. Apparently this meant the ham was cured and processed in such a way that the flavor was consistent for any ham you bought. Seems this was always the case with other lesser brand hams!

Spiced Baked Fixed Flavor Star Ham

12 lb Fixed-Flavor Star Ham
1/2 cup water (in which ham was cooked)
1 tsp mustard
6 slices of canned pineapple
1/2 cup brown sugar
1/2 tsp paprika
Whole cloves
1/2 cup vinegar
6 prunes
6 maraschino cherries



Plunge ham into water, boil ten minutes, reduce heat, and simmer two hours. Remove rind. Sprinkle the fat surface with the mustard and paprika. Pour over the vinegar and water mixed and bake in a slow oven (300° F) for 1 1/2 hours. Baste frequently. Sprinkle fat surface with the brown sugar, dot with whole cloves. Continue baking without basting for 1 hour. Place slices of pineapple around ham and continue baking 1/2 hour. Garnish with pineapple rings, prunes and cherries. Serves 16 to 18.

Brands We Still Know

By Sherry

In August of 1910, John Valentine, a lawyer who was also a floral company owner put together a retailers cooperative of florists who agreed to work together on florist orders via the use of the telegraph. The business was called the Florists' Telegraph Delivery. Although Valentine lived in Denver, the new company was based in Detroit, Michigan and then moved to Southfield, Michigan prior to its move to Downers Grove.

The company started with 13 florists and by end of 1929, the group had grown to over 5000 locations. In 1912, a new logo featuring Mercury, the mythical messenger o the gods was introduced, to emphasize the speed of delivery. The logo was copyrighted in 1929. In 1965 the official name was changed to "Florists' Transworld Delivery."

Interesting note: Over the years, prominent entertainers have advertised for FTD, including Kim Novak, Elizabeth Taylor, Dale Evans, Rosemary Clooney, and Betty Davis.



1931 Ad

Model A Mystery Part

What is it?

Do you know?

For "Bragging Rights", Send an email to nwmodelafordclub@gmail.com
Or to NWMO Model A Ford Club
Box 34, Liberty MO 64069



Photo courtesy of Bratton's
Antique Auto Parts

Last Month's Mystery Part

This is a "Pinion Bearing Nut."
The ears of this washer get bent
around the pinion bearing nut to
secure them in place.



Did you know?

Photo courtesy of Snyder's
Antique Auto Parts

Walt's Old Time Tech Tip

This article was originally found in the October 2019 issue of The **TAILLIGHTER**, the official publication of the Western Lake Erie Region M.A.R.C.

Tightening Nuts and Bolts...

Written by Joe Fox

I recently got a second reminder of what may not be common knowledge, so I thought I would share it with y'all. A while back, when servicing my (modern) car, I found the lug nuts to be difficult to remove due to rust buildup, so I applied a bit of anti-seize lube to the studs. They went back on much better! However, when I later took the car in for new tires, I was told by the attendant that he had to clean the grease off the studs & lugs in order to get a good torque reading! Oops! Lesson learned... maybe...

While reading through the latest on-line issue of MAFCA's monthly newsletter, I was again reminded of the proper technique for tightening (torqueing) nuts and bolts. Keep in mind you shade-tree mechanics... this applies to modern stuff too! Thanks to Jim Cannon for this info...

Torque is a measure of the twisting force on something, like a nut or a bolt. When you tighten a nut, you are actually stretching the bolt or stud that the nut is turning on. It is the stretch of the bolt or stud that provides the strong "clamping force" that holds everything together tightly. Overtightening can cause breakage, e.g. if a stud/bolt is weak due to age or corrosion.

While Ford did not publish torque values in the Model A era, this information is now readily available and should be followed. Published torque values are for tightening a nut or bolt with clean, dry threads. Remove rust with a wire brush, and wipe the parts dry. Don't apply oil or anti-seize. Use a torque wrench, and when you reach the desired torque, stop tightening! (If you need to insert a cotter pin, keep tightening the nut just far enough to slip the pin in.)

If you lubricate the threads, it will be too easy to turn the nut as you torque it. Thus, when you stop at your target torque (say 55 ft-lbs. for a head nut) you will have stretched the bolt or stud more than 2 times as far as with dry threads. This will be like over-torqueing the nut and can result in the stud or bolt breaking, the stud pulling out of the block, or the head or block cracking. That will surely ruin your day!

Model A Recommended Torque Values

Bolt Location	Bolt Size	Tensile Strength psi	Grade	Torque ft. lbs.	Remarks
Differential Carrier Assy	3/8-24	74,000	2	20	Low Carbon Steel (Original Model A)
Axle Housing-to-Banjo Bolts	3/8-24	74,000	2	20	Low Carbon Steel
Torque Tube-to-Banjo Bolts	3/8-24	74,000	2	20	Low Carbon Steel
Rear Axle Nut	5/8-18	110,000		100	Hardened Axle Threads
Wheel Lug Nuts	--	--		64	
Pinion Bearing Preload Nut	--	--	New Bearing Used Bearing	20 in.lbs. 15 in.lbs.	Adjust nut for Torque inch lb. drag on Drive Shaft
Timing Gear Nut	--	--		100	
Pressure Plate Bolts	5/16-18	150,000	5	20	Replace with Grade 5
Head Nuts	7/16-20	150,000		55	
Manifold Nuts	7/16-20	150,000		45	
Flywheel Hsg-to-Block Bolts	7/16-14	120,000	5	50	Grade 5 or Better
Flywheel-to-Crank Bolts	7/16-20	120,000	5	50	Grade 5 or Better
Crankshaft Pulley Nut	-	-		50	
Main Bearing Bolts	1/2-20	-	-	80	
Rod Bearing Nuts	7/16-20	-	-	35	
Spark Plugs	-	-		25	

Originally printed in the of Service Hints article written by Les Andrews, March/April 1999 edition of The Restorer Magazine,



For Sale / Wanted To place an ad send your information to swinkinhofer@Hotmail.com, or mail to Sherry Winkinhofer

As a service to our members, the area Model A clubs have decided to share our classified ads sections! (this will include Model A specific items only.) Ads will run approximately 3 months unless we are notified that the item is still available.

Wanted: 30-31 AA dual wheel, flatbed or just a cab & chassis.

Contact: Bob DeLay 810-653-7861, Davison, Michigan
(NWMO 10/2019)

For Sale: 1930 Model A Coupe with rumble seat. \$16,500. This was Lee Felsberg's vehicle.

Contact: Randy Baker 816-261-2452 or Judy Baker 816-261-0018.
(NWMO 09/2019)



For Sale: Two Model A's

1929 Roadster—Beautifully restored with rumble seat, green with black fenders and cream wheels. This is an older restoration, with a full set of side curtains, turn signals, Stone Guard, and Wind wings. Included is a trunk rack (with a partially finished professionally made trunk, if buyer wants it). \$12,000

1931 Standard Coupe—Beautiful Restored with dual side mounted spares, no rumble seat. This car runs well, tires on ground are in good shape. The interior has a couple of rough spots, and some touch-up paint is needed on fenders. Car has new Stone Guard and original trunk rack. (A completed, professionally made trunk and five very good white wall tires and tubes are included, if buyer wants them).

Contact: Shirley Cormack 785-841-6033
kstrunkguy@yahoo.com (POA 11/2019)



For Sale: 1929 Tudor. New Paint, New Interior, Runs Great. \$13,500 OBO.

Contact: Dan Fischer @ (515) 571-0086. (CIMA 11/2019)

For Sale: 1931 Model A coupe, "1970s" paint restoration, solid body, runs, needs a horn, could use new wiring. \$15,000 OBO.

Contact: Sue Dreesman @ (319) 415-7725 (CIMA 11/2019)

For Sale: 1930 Model A Tudor, reasonable price, driver, good condition, located in Springdale AR.

Contact: Bill Dewberry chevyman49@yahoo.com

For Sale: Grandpa's Garage - DeSoto, Kansas Dean Weller is listing most of his cars for sale, including: 4 Model T Fords, 9 Model A Fords, 3 Chevrolets, 2 Buicks, 2 Cadillacs, 1 Lincoln, 1 Edsel, 1 Crosley, 1 Dodge, 1 DeSoto, 1 Star, 1 Freeway. Please call for an appointment - Open Tuesday, Friday, and Saturday

Contact: Dean Weller 913-585-3326/913-585-1313

For Sale: 1930 Ford Model A sedan, has been restored and is in great condition, considered a parade condition car. Runs great has always been stored in a private garage. Reason for selling is owner has moved to retirement center and kids are helping downsize the estate. Car is located in Omaha Nebraska. More pictures available upon request.

Contact: Terry at TerryMkt@cox.net
(NWMO 11/2019)



For Sale: 1929 Model A Roadster Pickup. Has flathead V 8, synchronized transmission, hydraulic brakes, 16 inch radial tires. All steel body and fenders.

Contact: Bill Skaggs 816 807 6300



(NWMO 09/2019)

For Sale: 1931 Coupe with Rumble Seat (older restoration). Black with 19" Red Wheels and White Walls, Radiator Stone guard, Ran 6 years ago.

Contact: Ryan Flattery @ (515) 447-0676 (CIMA 11/2019)

Full Jeweled Transmission

Used on Model A

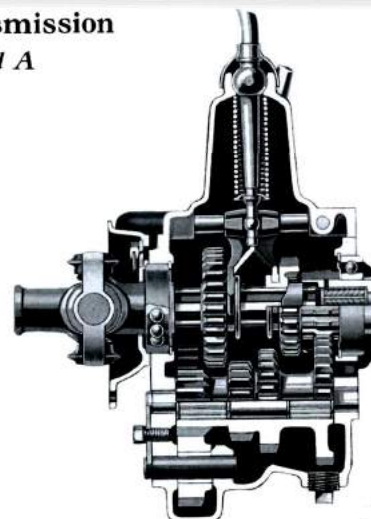
Seven ball and roller bearings of best quality in clutch and transmission reduce friction and assure permanent alignment of gears and shafts.

Roller bearings used to carry countershaft and at junction of drive and spline shafts because they are best for radial load found here.

Drive and spline shafts rotate in ball bearings since they are most efficient for radial loads to which end thrust is added.

Gears and shafts are of chrome alloy steel forgings, heat treated for hardness.

Exceptionally easy shifting.



**Fordex
Data**

The article to the right was found in a book called the "Fordex Data" manual. It's a replication of the Ford sales training book offered in 1930. It's filled with lots of information on all body styles and accessories available during that time period. It was brought to my attention when Charlie Goodwin loaned me a copy, and then I just had to buy my own to keep. I found my copy at <https://www.mikes-afordable.com>.

It's that time of year again! Time to renew your membership! Please fill out this form and submit it prior to December 31st.



Northwest Missouri Model A Ford Club Membership Application

www.nwmomodela.com

<input type="checkbox"/> New Membership: <input type="checkbox"/> Renewal:			
Name:		Spouse/Partner:	
Address:			
City:		State:	Zip:
Home Phone:	Member Cell:		Other Cell:
Member Email:		Other Email:	
Month/Day of Birth:	Anniversary:		Month/Day of Birth:
Allow information for club roster or handbook yes <input type="checkbox"/> no <input type="checkbox"/>			
Model A Information			
Year:		Model:	
Indicate Condition: <input type="checkbox"/> Show <input type="checkbox"/> Restored <input type="checkbox"/> Being Restored <input type="checkbox"/> Drivable <input type="checkbox"/> Basket Case (but there's still hope!)			
Year:		Model:	
Indicate Condition: <input type="checkbox"/> Show <input type="checkbox"/> Restored <input type="checkbox"/> Being Restored <input type="checkbox"/> Drivable <input type="checkbox"/> Basket Case (but there's still hope!)			
Membership in National Organization			
<input type="checkbox"/> Model A Ford Club of America (MAFCA)		<input type="checkbox"/> Model A Restorers Club (MARC)	
<i>National affiliation is strongly encouraged but not required</i>			
Membership in other local clubs			
<input type="checkbox"/> Members of Plain Ol' A's <input type="checkbox"/> Heart of America <input type="checkbox"/> Henry's A's <input type="checkbox"/> Other _____			
Auto Insurance Requirements:			
Owners of all cars must meet state mandated insurance requirements for vehicles. The Northwest Missouri Model A Club is not legally responsible for any expenses incurred due to accidents or injuries sustained in club sponsored events.			
Signature:			Date:
<input type="checkbox"/> Enclosed are my dues for membership year January 1 to December 31		\$25.00	
<input type="checkbox"/> Enclosed are my dues for partial year membership (Prorated per month; check with the membership director)		\$_____	
Please make checks payable to: NORTHWEST MISSOURI MODEL A FORD CLUB			
<input type="checkbox"/> Send Newsletter by US Mail		<input type="checkbox"/> Email attachment. Will save club postage	
Mail to:		NWMO Model A Ford Club Attn: Treasurer PO Box 34 Liberty, MO 64069	

Club Videos

Did you know the club has videos they can loan out? Walt has recently got approval to add a few new titles to this list also. There are also a few specialty tools available as well. Check with Walt Jones if you want to borrow any of these:

Model A Museum (A Stroll Through the Museum)
Replacing Your Model A Ford 1930 Pickup Roof
Rebuilding Model A 2-Tooth Steering
Installing Flat Head Ted's Brake Floater Kit
Setting Your Model A Ford Engine Bearing Clearances
How to Stop On a Dime
Radio in the Model A Days
Old Time Cars Parkville Parade July 4 2014
2000 Model A Hill Climb, Weston MO
2011 Lathrop Antique Car, Tractor and Engine Show
Road Side Troubleshooting
Carburetors and Carbohydrates
Gennin' Along with Lloyd & Floyd
Fahrenheit fright
Biography" Henry Ford—Tin Lizzy Tycoon



A few tools that might be of help:

Spoke straightener
Spider removal tool
Gas Gauge Removal Tool

RETIREMENT PLANNING – IS SOCIAL SECURITY ENOUGH FOR YOU?

While most of us realize the importance of retirement planning, sadly, it is something that many of us do not take seriously. Recent studies have shown that one in three Americans have no retirement saving and an additional 23% have less than \$10,000 in retirement savings. Only 53% of working Americans are covered by a retirement plan at work; 23% are covered by a pension and 40% have access to a retirement savings plan, such as a 401k. However, out of those 40%, only 44% actually take advantage of their retirement savings plan. The 47% of Americans not covered by a retirement plan at work have to take accountability of their retirement savings and, according to the studies, many simply do not.

Some people may simply think that they will live comfortably off their social security. Well, if you can maintain your lifestyle on the approximate 40% of their income that social security will likely replace, then you are correct! Frankly, I don't think many can. Plus, it is expected that without legislation, the Social Security Trust Fund will run out of money in 2034. At that time, benefits will have to be paid by the taxes paid by people in the workforce. With 10,000 baby boomers retiring per day, it is projected that these taxes will only support 79% of the benefits being paid. Which will lead to either reduced benefits, or more likely in my opinion, higher payroll taxes for employers and employees.

People often decide that they are going to draw social security as soon as they can, at 62. This is a decision not to be taken lightly. It first reduces your full retirement benefit by 26.67% for the rest of your life. It also reduces the amount your spouse can receive; if you hold off drawing social security until full retirement age (67 for those born in 1960 or later), the lower earning spouse is entitled to at least half of the benefit of the higher-earning spouse. Secondly, it limits the amount of additional income you can make to \$17,040 until you reach full retirement age. If you exceed that amount, \$1 of your social security benefit is taken away for every \$3 above the limit. It is quite likely that if you elect early retirement, you are quite likely exiting the work force in your peak earning years, potentially hindering your ability to live your retirement years in the lifestyle you would like.

A key consideration on whether to draw your social security early is your honest assessment of your longevity. The break-even on whether to draw social security at 62 vs. your full retirement age is approximately 17 years, or at 79. If you wait to draw social security until 70, the break-even is approximately 82. Let's use an example of a person eligible for \$25,000 of social security at 62. If he/she waits until full retirement age of 67, that benefit would be \$35,766 and at 70 it would be \$43,720 or a difference of \$18,720 a year. In addition, your spouse would receive half of that benefit if hers/his calculated benefit is less than that. Also, keep in mind that the surviving spouse bumps up to the decedent spouse's benefit if it is higher.

DAVID B. BLICKHAN, MBA
Branch Owner
P 816.746.0080 | M 816.694.2625
dblickhan@jcgrason.com
www.jcgrasonkansascity.com

J. GRASON
Helping Make Retirement Dreams a Reality!

The decision on when to begin drawing on social security is a personal one, yet one of the most important decisions you will make in your retirement planning. The government has tightened some loopholes on strategies to maximize your benefit but there are still options. If you would like to discuss your specific situation, please feel free to contact me at 816-746-0080 for a complimentary consultation.

Commercial advertising space is available for \$25 per annum for a business card size space (approximately 2 x 4) or \$50 per annum for a quarter page (approximately 4 x 4). These ads are also included on our website at www.nwmomodela.com For more info, contact us at nwmomodelaclub@gmail.com

The Northwest Model A Ford Club does not personally endorse or guarantee any products or services advertised in this publication

A - Z Model A Parts - Zanes

Ron and Sondra Kester, Owners
787 Central Street
Glade, Kansas 67639
Phone: 785-543-6729
e-mail: 2officegirls@ruraltel.net

AUTO COLOR & EQUIPMENT

524 E. 23rd Street Independence, MO 64055

TOUCH UP Aerosols - Bottles

Computerized Color Match Available

PHONE: 816-254-5630 FAX: 916-254-5635
www.auto-color.com

AMERICAN LEGION

USMC NAVY
ARMY USAF
COAST GUARD

Serving ALL Veterans and
the Community



Remembering
Those Who Served

Smithville American Legion Post 58
P.O. Box 158
Smithville, Missouri 64089
(816) 532-8115

LOCATED AT:
Hwy 92 & County Road DD

Find us on Facebook at:

<https://www.facebook.com/SmithvilleAmericanLegionPost58>

www.bobbondart.com

50
YEARS

- Graphics
- Lettering
- Pinstriping
- Airbrushing
- Flames
- Gold Leafing
- Logo Designing
- Automotive Art

25612 NE Colbern Road Lee's Summit, MO
816-554-1800 1-800 BOB BOND

BRATTON'S ANTIQUE AUTO PARTS



800-255-1929 Phone
www.brattons.com

800-774-1930 Fax
1606 Back Acre Circle
Mount Airy, MD 21771

Your source for Quality Model A Ford Parts since 1976

Tom Kautz
Owner

www.tomkautz.com

KAUTZ
Established 1916



Electric
Auto Parts
Auto Glass

Rebuilding Starters, Generators, and Alternators
6volt - 12 volt

920 Commercial St.
Atchison, KS 66002

Phone: (913) 367-1717

"HAVE AN 'A' DAY"

Mike's

Michael Butcher

1-888-879-6453

email: mike@mikes-afordable.com
www.mikes-afordable.com



Specialising in 1928 - 1931 Model A Ford Parts

THE WORLD'S LARGEST SUPPLIER OF 1909-31 FORD PARTS!

Toll Free Ordering:
(888) 262-5712

On-Line Ordering: snydersantiqueauto.com

Visit Our Website
snydersantiqueauto.com
New Products Added Daily!
Product Installation Instructions!

SNYDER'S
ANTIQUE AUTO PARTS

12925 Woodworth Road ♦ New Springfield, OH 44443



FREE CATALOG

*\$10.00 Outside the U.S., Canada and Mexico

The Northwest Model A Ford Club does not personally endorse or guarantee any products or services advertised in this publication

-Membership is Strongly Encouraged in Both of these Excellent National Organizations-



Model A Ford Club of America

Join on line at **MAFCA.COM**

~Membership Benefits~

The *Restorer* magazine • Technical Support • Local Chapters • National Meets • Era Fashion Guidelines

• "How to Restore Series • Judging Standards

and
Restoration Guidelines

Optional Initiation Package

For New Members Only

1—Back issue of *The Restorer*

1—MAFCA Lapel Pin

1—MAFCA Decal

Dues per year are

U.S. Membership- \$50

Canada/Mexico Membership - \$60

International Membership - \$70

New Membership

Name _____

Spouse's Name _____

Address _____

City _____

State _____ Zip _____



Model "A" Restorers Club

6721 Merriman Rd, Garden City MI 48135

(734) 427-9050 office

(734) 427-9054 fax

Find Membership forms at <http://model-a-ford.org/>

2018 Dues- New or Renewals () US Membership \$45.00

() US Air Mail \$57.00 () () Canada \$55.00 () International \$61.00

**New Members Only- Partial Membership:
J/A, S/O & N/D issues only!**

() US Membership \$24.00 () US & Canada Air Mail \$34.00 () International \$42.00

IMPORTANT:

Make checks payable to Model "A" Restorers Club (M.A.R.C.)

All Memberships from outside the U.S. are to be remitted by International Money Orders in U.S. Funds (drawn on U.S. Bank) or credit card. And a personal check drawn on U.S. bank (U.S. funds must be stamped on check.)

With your membership you will receive a club membership I.D. card and the *Model "A" News*, our BI-monthly club magazine. In addition, each member is entitled to a free 40 word classified ad in each issue of our international publication, the *Model "A" News* (A good source of parts and information you may need for your car).

Address: _____

City: _____ State: _____ Zip: _____

I give permission to publish my phone number in the future MARC Membership Rosters:

() Yes () No Phone: _____

I give permission to publish my email in the future MARC Membership Rosters:

() Yes () No Email: _____

THE ROAD RUNNER

% SHERRY WINKINHOFFER

1459 Woodland Ave

Liberty MO 64068