



The ROAD RUNNER



MAFCA Charter

MAFCA "Newsletter of the Year 2019, MARC "Award of Excellence" 2018

MARC Region

Officers

President:	Junior Blakley
Vice President:	Larry Harding
Secretary:	Jody Layne
Treasurer:	David Silvers
Activities/Tours :	Jeanne Harding
Technical	Walt Jones
Concerns/Calling	Etta Ridgeway
Membership/Public Relations:	Mary Lou Matteson
Merchandising:	Looking for volunteer!!
Raffle	Glenda Dunlop
Newsletter/Webmaster:	Sherry Winkinhofer
Property:	Steve Talley
Director:	Loura Cook
Director:	Bill Matteson

Birthdays

Karen Goodwin 03/01	Kay Lawlor 03/24
Lonie Hank 03/01	John Osborn 03/26
Janice Harmon 03/02	Jim Shaw 03/26
Stan Mallory 03/03	Ken Buell 03/28
Marquita Pace 03/07	Belva Carson 03/29
Donna Martin 03/12	Loura Cook 03/29
Sharon Kiehl 03/15	Walter Jones 03/30
Marilyn Griggs 03/16	Brenda Meyer 03/30

Anniversaries

John & Beth Osborn	03/13
Clyde & Marquita Pace	03/15
Frank & Julie Parnell	03/17
Bob & Donna Dunham	03/18

Monthly Meeting

March 2, 2020

6:00 PM dinner available at special price, 7:00 PM meeting
The American Legion, 92 Hwy & DD, Smithville MO

Board Meeting

March 19, 2020

The 3rd Thursday of each month,
7:00 PM, Woodneath Library Center
8900 NE Flintlock Rd, Kansas City, MO 64157

Technical Meeting & Breakfast Club-KC

Big Biscuit in Liberty

Please join us every Wednesday 7:00 am to "whenever"
at the Liberty Corner Shopping Center, at 840 Hwy 291
(816-429-5314)

Technical Meeting & Breakfast Club-St Joe

Every Monday 8:00-10:00 AM
Hy-Vee 201 North Belt Highway, St. Joseph

Ice Cream & Socializing

Every Saturday evening 6:00 PM
Big Burger, 4700 NE Vivion Rd
Kansas City, Mo. 64119

President's Comments:

So, are we going to have a good touring season or not? One side of the country the groundhog didn't see his shadow, but I know in my part of the Midwest, he did. I know the weather has been all over the board this month. One day it's warm, the next cold again, then a little rain, then how about a little snow. Ok, Missouri, I suppose you are hanging in there true to your reputation. I hoped that I would be listening to comments about this year's first garage day at Terry's. But due to the weather, it had to be canceled. But a new date is currently being planned. Stay tuned!

Now let's talk about this silent auction. You should all know it is our yearly major fundraiser for the club. Bring what you can; car parts, tools, baked goods, it's all good and a benefit to the club. Oh yes and bring lots of money too. I dare anyone to challenge my wallet if there is something I really want!

The final word I need to mention is about the Regional this year which will be in Overland Park, Kansas. The Plain Ol A's are hosting it from May 31 to June 5th. Registration forms can be found on their website Plainolas.com. It would be great fun for our club to have a big showing. Hope to see you there!

Junior Blakley, President

When I find it, I don't need it. When I need it, I can't find it.

Editor's Comments:

The Old Lady has finally made her way out of my sister's garage and into my brother's! I am now hopeful that she will be getting the exhaust work she needs done in time to join the Spring tours! Keep your fingers crossed!

There are so many events being planned for this year that I don't know which way to look! My schedule is getting filled up for the summer and it's not even the end of February. But when it's Model A events filling most of the squares on my calendar, it's a good thing! With the Regional in Overland Park and the National in Texas, both in June, I'm going to be extra busy that month. Let's not forget the club picnic that month too!

But I'm getting ahead of myself. There's the Shakedown Tour that is being planned for April, the outing to the Ladies Tea, also in April, and the annual visit to the Cameron Veteran's Home in May to get to first! And I hear that Jeanne and Larry are working on squeezing in a few more activities this spring too, stay tuned!

All in all, there are going to be plenty of opportunities for Model A time, and isn't that what this club is all about? That and spending time with friends, that's important too! See you out and about as soon as possible!

Happy "A"ing
Sherry Wink, Editor

NORTHWEST MO. MODEL A FORD CLUB MEETING
American Legion Hall, Smithville, Mo.
February 3, 2020 7:00 p.m.

GREETERS: Larry & Jeanne Harding.

MEETING OPENING: President Junior Blakley started the meeting at 7:00 pm. following the Pledge of Allegiance. He introduced the program for the evening. CHRIS & JEN BEST on Paranoia Science & their winery. It was a very interesting program & everyone showed a lot of interest. THANK YOU Larry & Jeanne.

VICE PRESIDENT: Larry advertised name tags; The cost is \$12.50 for names & \$3.75 for drop titles. The program for March will be our yearly fundraiser "Silent Auction." It's been a VERY GOOD event for our treasury, please try to bring some of that stuff laying around the house or garage. Just come & enjoy the fun we have trying to outbid each other, all for the good of the club!

SECRETARY REPORT: There were NO corrections & approved by Pat & Loura.

TREASURER REPORT: Opening balance as of January; \$14,005.03 (see attached page.) The motion was accepted & passed. Annual Audit was conducted and reported on by Larry Harding and Bill Skaggs.

ACTIVITIES: Jeanne Harding announced the Valentine's Dinner, February 13th at Corner Café in Liberty at 5:30 pm. Men's Garage date February 15th at Terry Richardson's garage, bring a chair. Spring tour to Arrow Rock. Ladies tea social April 26th Platte City. May 16th veterans home in Cameron. May 15 Regional meeting in Kansas. June 19 & 20th Lathrop Gas Station. June 21-26 National MAFCA meet in Texas. June 27th club picnic, Weston State Park. October 9-11 Lathrop Gas Station needs volunteers to work.

TECHNICAL: Workshop at Richardson's garage working on an engine.

CONCERNS: Etta sent get well cards to Walt Jones regarding his back, Loura Cook due to heart surgery, Nelson Young due to eye problems, Sue Long having chemo. Dave & Sharon Silvers had a great-grandbaby. Birthday & anniversaries were acknowledged.

MEMBERSHIP: Mary Lou reported 40 members present. Pat & Kay Lawler had a guest present. Mary Lou reported 3 new members. Thank you Mary Lou!

MERCHANDISING: Larry Harding & Jody Layne are filling in that open spot on the board. THANK YOU FOR YOUR SUPPORT.

NEWSLETTER/WebSite: Deadline for pictures and any corrections for the 2020 roster was tonight & going to print this week.

RAFFLE: The winner of the \$25.00 gift card this month was Lonie Hank. The raffle took in \$100.00. All those sweet goodies were appreciated by everyone. Thank you Glenda!

Submitted by Jody Layne.

MAFFI Newsletter Minute February 2020

My name is Greg Fish, and I am a MAFFI Trustee. Your Board of Directors, myself, fellow trustees, and a very important handful of other volunteers make up a group committed to the display and care of a fantastic collection of Henry's Ford Model A's. Through discussions at the last Model A Day Foundation meeting, it was decided that the upkeep of your cars and trucks should consist of more than dusting and polishing.

I am pleased to announce the VMP, or Vehicle Maintenance Program. This will be a little more involved than in years past, due to the decision that vehicles owned by the Foundation should be run annually. Despite a beautiful climate controlled building, some types of deterioration will not yield. Valves get stuck, clutch surfaces develop surface rust, and Heaven forbid, engines may become stuck fast over years of non-use. These are preservation issues that we are striving to avoid. Beginning in the spring, your trustees will convene on the museum with teams chosen by them with the goal of starting and running some of our long dormant stock. Over the course of the summer, and after a few visits, we hope to have every MAFFI owned vehicle running, and continue this goal on an annual basis. It is an important process to insure the cars and trucks we love last for generations to come.

clubcontact@maffi.org

MAFCA Board of Directors Meeting Highlights

February 8, 2020, La Habra CA

National Conventions

June 21-26, 2020
Kerrville, TX
Host: The Alamo A's

2022 - Open

2024 - Open

National Tours

June 20-24, 2021
North Conway, NH
Host: Lakes Region Model A Club

2023 No date available as of 02/08/2020
Dearborn, MI area

Host: Southeast Touring Group SIG

2025 - Open

2027 - Open

National Awards Banquet

2020 December 3-6, 2020
Dallas Fort Worth, TX
Host: Fort Worth Model A Club

2021 - Open

Policy Changes

There were no Policy changes.

Submitted by Kay C. Lee, Secretary
February 10, 2020



Activities

"Departure places and times for events will be published on the Web Site and Newsletter the month prior to the event".

March 7th—Spring Tune-up at Chili's Garage

12605 Hillcrest Drive, Liberty MO 64068
9:00 a.m., plan on lunch

April 2-4th—2020 MARC Membership Meet

Plymouth, Indiana

<https://model-a-ford.org/calendar/>

April 26th—Ladies Tea Platte City

See below for details

May 15—Cameron Veterans Home Visit

Plans pending

May 31, 2020 – June 5, 2020 – Regional Convention

Plain Ol A's Overland Park
See page 5 for more details

June 19 & 20th—Lathrop Gas Station

Plans pending

June 21-26—MAFCA National Convention

Kerville, Texas, Host: Alamo A's

<http://www.alamomodela.com/mafca-national-convention-2020.php>

See page 5 for more details

If you are planning on joining in on any of the tours or activities, please sign-up at the meeting or let Jeanne Harding know in advance at (816) 792-0099. That way if an event has to be canceled or has a location or the schedule changed, we will do our best to make sure you are notified!



5th Annual Platte County Tea April 26, 2:00 p.m.

Come join us at the Eighteen Ninety Event Center in Platte City for "A Roaring Twenties Tea", sponsored by the Platte City Friends of the Arts!

This event includes a catered meal, themed tables, a silent auction, entertainment and goodie bags. Tours of the Eighteen Ninety house are also available!

This year is the first year that the Northwest Missouri Model A Club will be hosting one of the themed tables! Jody and I are having fun planning this 1928 themed setting!

Tickets for this event are \$35 and normally sell out quickly. They must be purchased prior to March 15th or the price goes up. Please let Jody know if you want to join us for a ladies day out!



Sunshine/Concerns (816) 719-9997

Etta Ridgeway is our Sunshine/Concerns lady! If you know anybody in need of a card or phone call, please let her know.

Next Meeting: Time for the 13th Annual Silent Auction!



The Man Behind the Tradition!

Many years ago, Bill Auch (and I'm sure a few friends) came up with the Silent Auction as a fun and easy fundraiser. Bill volunteered to coordinate the event and has been stuck happily volunteered as lead coordinator since. The club has since raised thousands of dollars over the years. This money helps support the many fun activities and events on our calendar and allows us to occasionally pay for special entertainment at a meeting that we otherwise could not afford.

The beauty of this event is that it takes minimum effort on your part. Just look through what you already have and bring a few things to donate. Then open that wallet or billfold just a little and find some new treasures to take home to fill those vacant spots!

There are few rules about what to donate, the only real one being, as Bill puts it, "Please bring quality items". That means stuff you'd consider bidding on too. Other than that, the sky is the limit. And has been the norm in the past, there will also be a "Reserve" table for big dollar items that will return to the bringer if the price is not reached.

This really is one of the easiest fundraisers I have ever taken part in. It requires no advance setup, no clean up at the end, and we always have a lot of fun doing it. I already have a box of items set aside to bring in, and I'm looking forward to finding a few new treasures to bring back home. I hope you are too!

Deadline for the Next Road Runner

The 20th of the preceding month

Email to swinkinhofer@hotmail.com

Or mail to: Sherry Winkinhofer

1459 Woodland Ave

Liberty MO 64068

Club Contact Information:

President Junior Blakley (816) 289-2875

All Officers: nwmomodelaclub@gmail.com

Publications: nwmomodelaclub@gmail.com

816-519-2630

Any articles or notes without a byline are written by your editor.

Visit www.nwmomodela.com today!

Please mail any info, pictures, questions & suggestions to:

NWMO Model A Ford Club

PO Box 34

Liberty MO 64069

Or email:

nwmomodelaclub@gmail.com

Three Model "A" Fords To Go – Taylor Truck-a-Way Co.



This load of three new 1930 Model "A" Fords is on a semi-trailer manufactured by the Taylor Truck-a-Way Co. of Los Angeles, CA. At the time, a rig of this type was used for local and regional transport, and long-distance transport of automobiles was handled primarily by train. The lightweight trailer frame is constructed in the form of a lattice girder that is resistant to bending. The lower part of the fifth wheel hitch on the truck is of the conventional type but uses a lightweight horizontal top section as seen in the second photo right.



The invention of the semi-trailer is attributed to August C. Fruehauf and Otto Neumann, and the first one was constructed in 1914 in Fruehauf's blacksmith shop in Detroit, MI. The firm later used a hitch invented by Hermann Farr and produced by Charles Martin's Rocking Hitch Company in Springfield, MA, before developing its own device.

The photos are courtesy of the USC Libraries.

The Model "A" Ford Moving the Goods in Texas



The Model "A" Ford was one of the most popular and durable cars of the time, and Henry Ford apparently did not waste any time to develop it into a sturdy light-duty truck. Ford did make a two-door Sedan Delivery, but seen above are two 1928 or 1929 Ford Taxi Cabs converted into light delivery vehicles with painted rear windows. The larger one bringing up the rear is a Model "AA" truck that appears to be wearing a school bus body; it also was converted to haul Falstaff Beer.

All three belonged to the Lightsey Carroll Distributors, and the crew, along with the beer haulers, are seen posing in front of the State Capitol building in Austin, Texas. The photo is dated May 25, 1934, which was only five months after Prohibition had ended on December 5, 1933. It appears that the Distributor quickly put its fleet together, to deliver the Falstaff beer they handled to its thirsty customers in the Capitol region.

The Model "A" was also quite popular with ranchers in Texas, for getting their cattle to the stockyards. The photo below from the Cattle Raisers Museum in Fort Worth shows a number of Fords including a 1930 or 1931 "AA" at the top serving as a tractor for a cattle trailer. In the middle is a "AA" flatbed of the same vintage and at the bottom is a 1928 or 1929 Tudor Sedan serving as a tow vehicle for a small trailer. Top photo courtesy of The University of North Texas Libraries.



Model A Adventures!

2020 Midwest Model A Regional - May 31-June 5, 2020

Overland Park Marriott Hotel at 10800 Metcalf Ave, Overland Park, KS 66210

CONTACT: Bob Hess - Registrar rhess@kc.rr.com 816-668-3902

See www.plainolas.com for more information and registration forms!.

Meet Highlights include:



World War I Museum

America's Official Museum
Dedicated to World War I



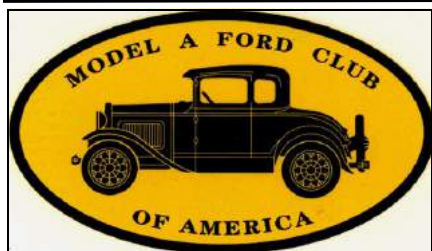
Ottawa, Kansas

Tour includes Visiting 3 Sites:
World's Oldest Operating Theater
Old Depot Museum
John Deere Tractor Collection



Mahaffie House

Stage Coach Stop and Working Farm
on the Santa Fe Trail



MAFCA National Convention 2020 Kerrville, Texas June 21 - 26, 2020

**Hosted by the Alamo As
The San Antonio Model A Ford Club**



The 2020 MAFCA - Model A Ford Club of America - National Convention will be held in Kerrville, Texas. The convention will be hosted by the San Antonio Model A Ford Club, the "Alamo As." The convention will be based in the Y.O. Ranch Resort Hotel. As well as seminars on Model A related subject, there will be a plethora of related activities, including Model A era fashions.

Kerrville is in the heart of the Hill Country, one of the most attractive areas in Texas. There are almost endless opportunities for scenic drives and a wealth of interesting places to visit. Kerrville itself is filled with charm, with a great variety of local restaurants and unique shops. The organizers will provide around 9 self-guided tours around the region, ranging from over 100 miles to shorter trips to closer attractions.

For convention applications and hotel information visit alamomodela.com/mafca-national-convention-2020.php



Wine Tours



San Antonio River Walk



Fashion Judging



Car Judging

*Swap Meet
Self Guided Tours
Vender indoor show
Seminars
And more!*

Era Cravats

By Sherry Wink

In Model A Era years, men always wore some type of neckwear to be considered properly dressed. Bow ties, cravats, ascots, and neckties were all worn. This article focuses on cravats and neckties, the most popular options.

A currently accepted definition of a cravat is a short, wide strip of fabric worn by men around the neck and tucked inside an open-necked shirt. However, in Model A days, the word cravat appears to have referred to neckties as we currently define the clothing. Here are a few Era ads illustrating that.



Pittsburg Press June 1931



Pittsburg Press March 1929



St. Louis Globe Democrat Dec 1928



Ties of this era were also many different colors and designs. While upper-class citizens wore more staid, conservative ties, bright colors were also popular across the board. Here's an interesting quote from 1928, written by a columnist for the Pittsburg Press by the name of Heywood Broun: "In fact every time I put on that orange-colored necktie, or the purple one with the pink splotches, I feel that I have won a moral victory. No cravat is much good unless it displays some hint of revolt." . . . "Still, as I was saying, a necktie ought to have something of rebellion about it. Since men can't wear red trousers or sky blue coats, except in armies or minstrel shows, they ought to show a flaming independence in their cravats. As one puts on his tie he ought to be able to say to the whole dun-colored and stupid world outside "That for you!". In fact, if the selection is daring enough the necktie can speak for itself quite audibly."



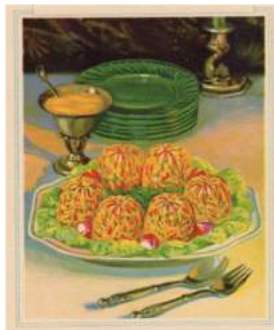
A selection of ties from a 1928 catalog.



An "interesting" recipe from the 1931 "Knox Gelatin Cookbook Dainty Desserts Candies Salads Recipes." It's a different combination than I would think to make of gelatin, but who knows, it might be tasty!

Perfection Salad

2 level tbsp Know Sparkling Gelatine
1/2 cup cold water 1 tsp salt
2 cups boiling water
1 cup cabbage, finely shredded
1/2 cup sugar
2 cups celery, cut in small pieces
1/2 cup mild vinegar
2 pimentos, cut in small pieces,
or 1/4 cup sweet red or green peppers
2 tbsp lemon juice

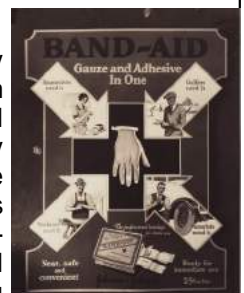


Soak gelatin in cold water for about five minutes. Add boiling water, sugar, vinegar, lemon juice and salt. When mixture begins to stiffen, add remaining ingredients, turn into wet mold, and chill. Remove to bed of lettuce or endive. Garnish with mayonnaise dressing or cut in cubes and serve in cases made of red or green peppers or turn into molds lined with canned pimentos. A delicious accompaniment to cold sliced chicken or veal.

12 servings

Brands We Still Know By Sherry Wink

The Johnson & Johnson Company started producing gauze in 1887. In 1920, an employee of Johnson and Johnson used their medical supply products to construct a new type of bandage. Earle Dickson's new wife Josephine was accident-prone in the kitchen, and he wanted her to have access to something she could easily apply herself.



1928 Ad

When Dickson demonstrated his new bandage to his boss, they quickly decided to market it. The first Band-Aid Brand Adhesive Bandage was introduced in 1921. The first Band-Aids were made by hand, were 18 inches long and 3 inches wide, and were cut to length as needed. Although sales were slow at first, by 1924 the market was so demanding that the company invented a machine to mass-produce the product. The design was changed to 3 inches wide by 3/4 inch and the bandages were individually wrapped.

It wasn't until 1939 that Band-Aids were produced sterilized.

Model A Mystery Part

What is it?

Do you know?

For "Bragging Rights", Send an email to nwmomodelafordclub@gmail.com
Or to NWMO Model A Ford Club
Box 34, Liberty MO 64069



Photo courtesy of Bratton's
Antique Auto Parts

Last Month's Mystery Part

This is a king pin bushing, used all four years. Two for each spindle are required, for a total of four per vehicle.

Did you know?



Photo courtesy of Snyder's
Antique Auto Parts

Walt's Old Time Tech Tip

A VOLTAGE INVERTER FOR YOUR MODEL

(Charging source for your GPS, Cell phone, etc.)

Found in the February 2020 Edition of "The Steering Column", the official Publication of the Greater Baltimore Model A Ford Club.

By Jim Gregory

So, you're on the road touring in your Model A and your phone or GPS battery dies! Now what? There is an answer. Of course, if you have restored your Model A and converted it to 12 volts, no problem. With a bit of forethought for touring, you mounted a small "power jack" neatly tucked under the dash and you're soon back in business. However, if you are like me and a lot of others that tour in our "maintained but unrestored" Model A, we're still on Henry's 6-volt positive ground system. A web search turned up this really neat DIGITEN DC 6V to 12V power I was looking for. And it is small enough to put almost anywhere.

Some web searching turned up an all-plastic housing auxiliary power jack, what a break! All I had to do was configure a sturdy mounting bracket that would tuck under the passenger side dash. We would be pushing on the jack, and it had to hold position.



DIGITEN DC 6V 5
-11V to 12V 10A
Step up Converter
Regulator
Waterproof Boost
Power Module

From
Amazon.com

Oh yeah, where to mount the Inverter. Humm! My choice location without drilling another hole in Miss Minnie was on the driver sidekick panel. For the driver that is completely out of the way. The passenger side already has the hot-water-heater plus control, and I don't think Joanne wanted anything over there. So, there it went! Now at less than \$40 bucks for the inverter(s), and power jack, and some change for the wiring and fuse, I think I got a really good deal here.

If positive/negative grounding was conflicting issue, mounting on the kick panel has solved it already. Dead GPS/cell phone battery issue solved! Another distraction removed from my cherished "Model A Windshield Time"!

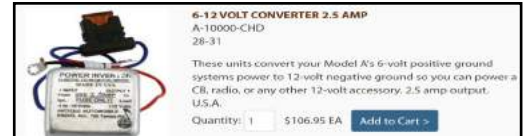
Editor's Note: Here are other options from Model Vendors:



Bratton's



Mike's Affordable



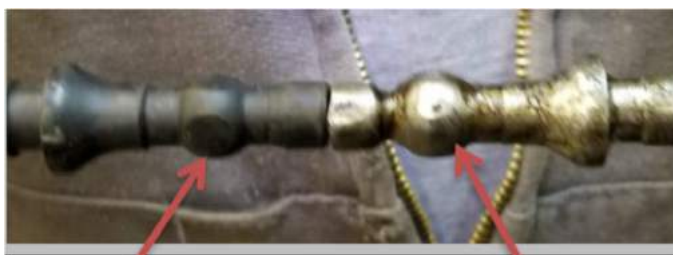
Snyder's

Transmission Shift Lever Rebuild Tool

Found in the February 2020 Edition of the Sullivan Trail A's News, from Horseheads NY

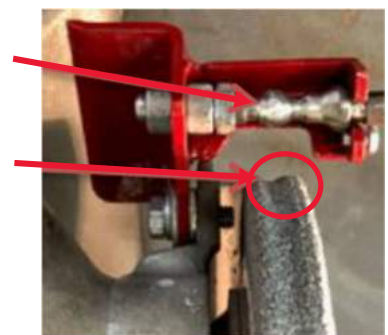
By Jim Morris

Do you have trouble shifting your Model A? Does your A slip out of gear? Depending upon what exact problem you're experiencing when you drive Ole Bessie, you might want to check your transmission shift lever for its condition. One spot of wear that typically occurs on the lever is on the end that's within the transmission case. If you remove the shift tower from the case and turn it upside down, you'll notice a ball at the end of the lever. This ball must be .490" round, but often it has been worn and needs to be rebuilt by building up the ball with weld and then rounding smooth to .490" round. There's a nice article written by Tom Endy of the Santa Anita A's on the subject of rebuilding the shift tower assembly so this space won't try to duplicate his fine guidance. (<http://www.santaanitaas.org/wp-content/uploads/2014/08/Transmission-Tower-Restoration.pdf>) Larry Reynolds of Sullivan Trail A's fabricated a nice tool that is used to round the weld at the end of the transmission shift lever. Here are two photos showing a worn shift lever and the red rebuild tool for shaping the weld to the desired .490" ball size.



Flat spot is worn area of ball .490" ball

Larry ground down the grinding wheel in the middle of its outside edge to .490". The red tool holds the end of the shift lever in place while the tool is pressed against the grinding wheel. In the photo the weld has been ground down to the desired .490" round ball size.





For Sale / Wanted To place an ad send your information to swinkinhofer@Hotmail.com, or mail to Sherry Winkinhofer

As a service to our members, the area Model A clubs have decided to share our classified ads sections! (this will include Model A specific items only.) Ads will run approximately 3 months unless we are notified that the item is still available.

For Sale: 1928 Model A Phaeton, right hand drive, motor was gone through by Paul Couch about 10 years ago, driven very few miles since. It is an older restoration that is still quite presentable. Ready to drive and have fun with. Needs some minor work to bring everything up being a very dependable car. \$17,500 or near offer. Might consider a trade?

Contact: Jim McDonald 515-360-4800 (CIMA 03/2020)

For Sale: 1930 Model A Coupe with rumble seat. \$16,500. This was Lee Felsberg's vehicle.



Contact: Randy Baker 816-261-2452
or Judy Baker 816-261-0018.

(NWMO 09/2019)

For Sale: 1930 Ford Model A sedan, has been restored and is in great condition, considered a parade condition car. Runs great has always been stored in a private garage. Reason for selling is owner has moved to retirement center and kids are helping downsize the estate. Car is located in Omaha Nebraska. More pictures available upon request.



Contact: Terry at TerryMkt@cox.net (NWMO 11/2019)

Winter Specials for Sale at Grandpa's Garage, DeSoto

12 Model A manifold heater covers, Choice \$30.00 and less, while they last.

8 Model A Horns ready to install, \$150.00 each

Approximately 50 old assorted jacks, \$5.00 to \$30.00

8 Model A jacks, one flip top

Also 10 original jack handles at \$15.00 each.

My building is under Contract of Sale. I am planning an auction in 2020. You can come now and buy your choice that you may not got at auction. Everything for Sale: Cars, Car Parts, Tools, Memorabilia and literature, etc. Come and browse. I still have 17 of the 29 cars for sale. Always open on Tuesday mornings or call to schedule an appointment.

Dean Weller 913-585-3326 Cell, 913-585-1313 Home - please leave a message.

If you haven't yet
Don't Forget



**Renew your 2020 membership
today**

**Call 866-379-3619
or visit**

www.mafca.com

Note from Terry Richardson!

I have two pieces of advice to share this month!



1: Do not take your Model A to a Jiffy Lube. They absolutely have no idea how to do a Lube Job. I had a friend recently take his Model A to a Quick Lube place. The rear end was low and also the transmission and they had no idea both took 600 weight oil. If any of the Members need their oil changed, get someone in the Club that knows how to do this and they'll be glad to help.

2: I want to also let Model A owners know to not take your Model A to a modern Muffler Shop. I know someone that did, and they put a modern muffler on his Model A. It ended up causing damage to his engine. A Model A must have the right muffler designed for that era of car.

Thanks for listening!

LICENSES FOR NEW FORD.

Orville L. Moffett Pays City \$5 and State \$16.50.

Orville L. Moffett, 3317 Renick street, a landscape architect, today took out the first city license issued here for a new Ford. Morey Martin, city license inspector, presented him with city license No. 1,027 and charged him \$5 for it, compared to \$3 charged for the old Ford.

Mr. Moffett said that he had ordered his new car last August. It has just been received. It is a sedan with motor 2,104 of the new model A type. Most of the old model T type now in use have engines numbered 14,000,000 or higher.

The new car is of twenty-four horsepower, which accounts for the higher cost of the license. The old was twenty-two and one-half horsepower. The state registration fee is \$16.50 in place of the old rate of \$10.50. Ben L. Arnholt issued state plates numbered 41-838 for the new Ford.

NEW FORD DELIVERIES.

First Cars Allotted Here by Lawler Motor Company.

The Lawler Motor Company today made the first delivery of new model A Fords. Cars were delivered to Harry Mohler, cashier of the Stock Yards Bank, a tudor sedan; E. H. Welch, Kelsey Nurseries, a tudor sedan; Saunders System, coupe sport model; U-Drive-It Company, tudor sedan.

Persons who have placed orders for the new Fords may expect them shortly, as word has been received that the Ford plant in Kansas City is now turning out fifty new cars a day.

CITY CAR IS RECOVERED.

New Ford Taken Last Night Was First in City to Be Stolen.

To the city of St. Joseph goes the honor of owning the first Model A Ford to be reported stolen at Central Police Station. The car, which belongs to the city engineering department and which is a coupe, was taken last night from its parking place in the 900 block of North Sixth street, where it had been left by E. T. Miller, 1912 South Twenty-fourth street. It was found early this morning on the Kansas City highway about ten miles southeast of the city. It had not been stripped.

Every purchaser
of a new Ford
is entitled to Free
Inspection Service
for the first 1500 miles



THE modern automobile is a finely built piece of machinery and it will stand a lot of abuse. Considering the work it does, it gives surprisingly little trouble. But there isn't a car made that will not run better and longer if given proper care.

The first few hundred miles are especially important because that is when the mechanism of your car is being broken in. Proper attention during this period will lengthen its life and prevent unnecessary trouble later on.

We are particularly interested in this matter because we believe it is our duty not only to make a good automobile, but to help the owner get the greatest possible use over the longest period of time at a minimum of trouble and expense.

With this in view, the entire Ford dealer organization has been specially trained and equipped to service the new Model A car.

Furthermore, we have instructed every Ford dealer to give the following Free Inspection at 500, 1000 and 1500 miles:

Check battery
Check generator charging rate
Check distributor adjustment
Check carburetor adjustment
Check lights
Check brakes
Check shock absorber adjustment
Check tire inflation
Check steering gear
Change engine oil
Lubricate chassis

No charge is made for labor or materials incidental to this service, except, of course, where repairs are necessary through accident, misuse or neglect. The only charge is for new oil.

See your Ford dealer, therefore, and get this Free Inspection of your new car at 500, 1000 and 1500 miles. Find out, too, how little it will cost to have your car given a thorough going-over at regular periods thereafter.

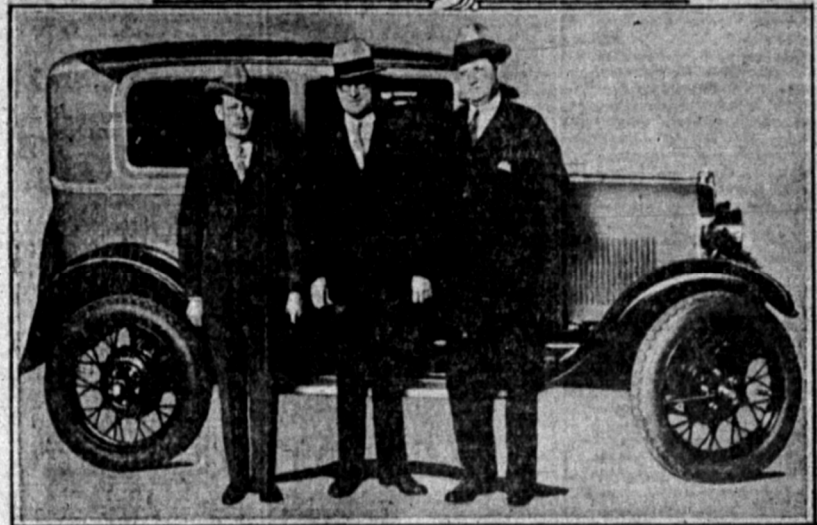
A periodic check-up, together with oiling and greasing every 500 miles, will add months and years to the life of your car and mean more economical and pleasurable motoring every mile you drive.



FORD MOTOR COMPANY

The "New Ford" was a big topic of interest in 1928. Here are a few items that appeared in local papers in St. Joseph Missouri. I found these articles on Newspapers.com in the St. Joseph News-Press and the St. Joseph Gazette

NEW FORDS TAKE SHAPE ON K. C. ASSEMBLY LINE



The first new Fords to be assembled in Kansas City were completed yesterday at the plant at 1025 Winchester avenue. Upper photograph shows the car in one of the primary stages of assembly. The rear and front axles are first assembled and then the motor is mounted. Lower photograph shows the first car turned out, a gray Tudor sedan. Standing in front of the car are, left to right, the members of the county court, Judge Robert W. Barr, Judge Harry S. Truman and Judge Howard J. Vrooman. Judge Truman drove one of the first cars off of the runway into the stock room.

Club Videos

Did you know the club has videos they can loan out? Walt has recently received approval to add a few new titles to this list also. There are also a few specialty tools available as well. Check with Walt Jones if you want to borrow any of these:

Model A Museum (A Stroll Through the Museum)
Replacing Your Model A Ford 1930 Pickup Roof
Rebuilding Model A 2-Tooth Steering
Installing Flat Head Ted's Brake Floater Kit
Setting Your Model A Ford Engine Bearing Clearances
How to Stop On a Dime
Radio in the Model A Days
Old Time Cars Parkville Parade July 4 2014
2000 Model A Hill Climb, Weston MO
2011 Lathrop Antique Car, Tractor and Engine Show
Road Side Troubleshooting
Carburetors and Carbohydrates
Gennin' Along with Lloyd & Floyd
Fahrenheit fright
Biography" Henry Ford—Tin Lizzy Tycoon



A few tools that might be of help:

Spoke straightener
Spider removal tool
Gas Gauge Removal Tool

RETIREMENT PLANNING – IS SOCIAL SECURITY ENOUGH FOR YOU?

While most of us realize the importance of retirement planning, sadly, it is something that many of us do not take seriously. Recent studies have shown that one in three Americans have no retirement saving and an additional 23% have less than \$10,000 in retirement savings. Only 53% of working Americans are covered by a retirement plan at work; 23% are covered by a pension and 40% have access to a retirement savings plan, such as a 401k. However, out of those 40%, only 44% actually take advantage of their retirement savings plan. The 47% of Americans not covered by a retirement plan at work have to take accountability of their retirement savings and, according to the studies, many simply do not.

Some people may simply think that they will live comfortably off their social security. Well, if you can maintain your lifestyle on the approximate 40% of their income that social security will likely replace, then you are correct! Frankly, I don't think many can. Plus, it is expected that without legislation, the Social Security Trust Fund will run out of money in 2034. At that time, benefits will have to be paid by the taxes paid by people in the workforce. With 10,000 baby boomers retiring per day, it is projected that these taxes will only support 79% of the benefits being paid. Which will lead to either reduced benefits, or more likely in my opinion, higher payroll taxes for employers and employees.

People often decide that they are going to draw social security as soon as they can, at 62. This is a decision not to be taken lightly. It first reduces your full retirement benefit by 26.67% for the rest of your life. It also reduces the amount your spouse can receive; if you hold off drawing social security until full retirement age (67 for those born in 1960 or later), the lower earning spouse is entitled to at least half of the benefit of the higher-earning spouse. Secondly, it limits the amount of additional income you can make to \$17,040 until you reach full retirement age. If you exceed that amount, \$1 of your social security benefit is taken away for every \$3 above the limit. It is quite likely that if you elect early retirement, you are quite likely exiting the work force in your peak earning years, potentially hindering your ability to live your retirement years in the lifestyle you would like.

A key consideration on whether to draw your social security early is your honest assessment of your longevity. The break-even on whether to draw social security at 62 vs. your full retirement age is approximately 17 years, or at 79. If you wait to draw social security until 70, the break-even is approximately 82. Let's use an example of a person eligible for \$25,000 of social security at 62. If he/she waits until full retirement age of 67, that benefit would be \$35,766 and at 70 it would be \$43,720 or a difference of \$18,720 a year. In addition, your spouse would receive half of that benefit if hers/his calculated benefit is less than that. Also, keep in mind that the surviving spouse bumps up to the decedent spouse's benefit if it is higher.

DAVID B. BLICKHAN, MBA
Branch Owner
P 816.746.0080 | M 816.694.2625
dblickhan@jcgrason.com
www.jcgrasonkansascity.com

J. GRASON
Helping Make Retirement Dreams a Reality!

The decision on when to begin drawing on social security is a personal one, yet one of the most important decisions you will make in your retirement planning. The government has tightened some loopholes on strategies to maximize your benefit but there are still options. If you would like to discuss your specific situation, please feel free to contact me at 816-746-0080 for a complimentary consultation.

Commercial advertising space is available for \$25 per year for a business card size space (approximately 2 x 4) or \$50 per year for a quarter page (approximately 4 x 4). These ads are also included on our website at www.nwmomodela.com For more info, contact us at nwmomodelaclub@gmail.com

The Northwest Model A Ford Club does not personally endorse or guarantee any products or services advertised in this publication

A - Z Model A Parts - Zanes

Ron and Sondra Kester, Owners
787 Central Street
Glade, Kansas 67639
Phone: 785-543-6729
e-mail: 2officegirls@ruraltel.net

AUTO COLOR & EQUIPMENT

524 E. 23rd Street Independence, MO 64055

TOUCH UP Aerosols - Bottles

Computerized Color Match Available

PHONE: 816-254-5630 FAX: 916-254-5635
www.auto-color.com

AMERICAN LEGION

USMC NAVY
ARMY USAF
COAST GUARD

Serving ALL Veterans and
the Community



Remembering
Those Who Served

Smithville American Legion Post 58
P.O. Box 158
Smithville, Missouri 64089
(816) 532-8115

LOCATED AT:
Hwy 92 & County Road DD

Find us on Facebook at:

<https://www.facebook.com/SmithvilleAmericanLegionPost58>

www.bobbondart.com

50
YEARS

• Graphics • Lettering • Pinstriping • Airbrushing • Flames • Gold Leafing • Logo Designing • Automotive Art

25612 NE Colbern Road Lee's Summit, MO
816-554-1800 1-800 BOB BOND

BRATTON'S ANTIQUE AUTO PARTS



800-255-1929 Phone
www.brattons.com
800-774-1930 Fax
1606 Back Acre Circle
Mount Airy, MD 21771

Your source for Quality Model A Ford Parts since 1976

Tom Kautz
Owner

www.tomkautz.com

KAUTZ  Electric
Auto Parts
Auto Glass
Established 1916

Rebuilding Starters, Generators, and Alternators
6volt - 12 volt

920 Commercial St. Phone: (913) 367-1717
Atchison, KS 66002

"HAVE AN 'A' DAY"

Mike's

Michael Butcher

1-888-879-6453

email: mike@mikes-afordable.com
www.mikes-afordable.com



Specialising in 1928 - 1931 Model A Ford Parts

THE WORLD'S LARGEST SUPPLIER OF 1909-31 FORD PARTS!

Toll Free Ordering:
(888) 262-5712

On-Line Ordering: snydersantiqueauto.com

Visit Our Website
snydersantiqueauto.com
New Products Added Daily!
Product Installation Instructions!

Snyder's
ANTIQUE AUTO PARTS

12925 Woodworth Road ♦ New Springfield, OH 44443



FREE CATALOG

*\$10.00 Outside the U.S., Canada and Mexico

The Northwest Model A Ford Club does not personally endorse or guarantee any products or services advertised in this publication

-membership is Strongly Encouraged in both of these Excellent National Organizations-



Model A Ford Club of America

Join on line at **MAFCA.COM**

~Membership Benefits~

The *Restorer* magazine • Technical Support • Local Chapters • National Meets • Era Fashion Guidelines
• "How to Restore Series • Judging Standards and Restoration Guidelines

Dues per year are
U.S. Membership- \$50
Canada/Mexico Membership - \$60
International Membership - \$70
Make checks payable to Model A Ford Club of America

**Optional Initiation Package
For New Members Only**
1—Back issue of *The Restorer*
1—MAFCA Lapel Pin
1—MAFCA Decal
1 0 Name Badge
Only \$10 extra

New Membership

Name _____

Spouse's Name _____

Address _____

City _____

State _____ Zip _____

Country _____ Telephone _____

Permission to publish my telephone number in future Membership Rosters? Yes: ___ No: ___

Return this Form and Payment to
MAFCA



Model "A" Restorers Club

6721 Merriman Rd, Garden City MI 48135

(734) 427-9050 office

(734) 427-9054 fax

Find Membership forms at <http://model-a-ford.org/>

2018 Dues- New or Renewals () US Membership \$45.00

() US Air Mail \$57.00 () Canada \$55.00 () International \$61.00

**New Members Only- Partial Membership:
J/A, S/O & N/D issues only!**

() US Membership \$24.00 () US & Canada Air Mail \$34.00 () International \$42.00

IMPORTANT:

Make checks payable to Model "A" Restorers Club (M.A.R.C.)

All Memberships from outside the U.S. are to be remitted by International Money Orders in U.S. Funds (drawn on U.S. Bank) or credit card. And a personal check drawn on U.S. bank (U.S. funds must be stamped on check.)

With your membership you will receive a club membership I.D. card and the *Model "A" News*, our BI-monthly club magazine. In addition, each member is entitled to a free 40 word classified ad in each issue of our international publication, the *Model "A" News* (A good source of parts and information you may need for your car).

Address: _____

City: _____ State: _____ Zip: _____

I give permission to publish my phone number in the future MARC Membership Rosters:

() Yes () No Phone: _____

I give permission to publish my email in the future MARC Membership Rosters:

() Yes () No Email: _____

THE ROAD RUNNER

% SHERRY WINKINHOFFER

1459 Woodland Ave

Liberty MO 64068