

The ROAD RUNNER



MAFCA Charter

MAFCA "Newsletter of Excellence" 2015, MARC "Award of Excellence" 2015

MARC Region



Officers

President:	Bill Skaggs
Vice President:	Loura Cook
Secretary:	Sandi Shaw
Treasurer:	Bob Martin
Activities/Tours :	Marvin Taylor
Technical	Walt Jones
Concerns/Calling:	Cheryl Taylor
Membership/Public Relations:	Liz Blakley
Merchandising:	Amy Lang
Raffle	
Newsletter/Publishing:	Sherry Winkinhofer
Property:	
Webmaster:	Dave Telles
Director:	John Kunkle
Director:	Terry Richardson

Birthdays

Larry Harding	02/01	Doug Scott	02/14
Melissa Spawn	02/02	Jean Gayle Parker	02/16
Vicky Roseberry	02/03	Dave Telles	02/22
Clarence Lawson	02/05	Beth Osborn	02/26
Malcolm McIntyre	02/07	Lanell Young	02/27

Anniversaries!

Milton & Sharon Hessefort	02/09
Scott & Rhonda Forsen	02/11
Bill & Sandy Skaggs	02/14
Pat & Kay Lawlor	02/20
Ron & Belva Carson	02/23

Monthly Meeting

February 6th, 2017

6:00 dinner available at special price, 7:00 meeting
The American Legion, 92 Hwy & DD, Smithville MO

Board Meeting

No Board Meeting in February

The 3rd Thursday of each even month,

7 pm , Mid-Continent Library

Boardwalk Shopping Center, Barry Road and I-29

Technical Meeting & Breakfast Club-KC

Big Biscuit in Liberty

Please join us at the Liberty Corner Shopping Center, at 840
Missouri Highway 291, (816-429-5314)

Technical Meeting & Breakfast Club-St Joe

Every Monday 8:00-10:00 AM

Hy-Vee 201 North Belt Highway, St. Joseph

Ice Cream & Socializing

Every Saturday evening 6:00 PM

Moved to FREDDYS by Liberty

9800 NE Barry Rd

Kansas City, MO 64157

President's Comments:

Bill's out of town again this month, but he asked me to share with you a list of some of the fun activities we've already scheduled in for the year! This list is by no means inclusive, and there is still plenty of room to add more tours and activities. But what we have so far is:

2/18/2017	Valentine Lunch
3/25/2017	Garage Night at Terry's
4/1/2017	Shake Down Cruise
5/20/2017	Cameron Veteran's Home
6/3/2017	Annual Club Picnic
6/5-9/2017	Omaha Regional
06/18/2017	Lathrop Car Show at Antique Grounds
07/04/2017	Independence Day Parade - Parkville
08/11-13/2017	h—Platte County Gas & Steam show
09/16/2017	Southside Parade - St. Joseph
09/16/2017	International Model A Appreciation Day
10/07/2017	Weston Parade
10/21/2017	Fall Foliage Tour
11/11/2017	Veteran's Day Parade - Leavenworth
12/10/2017	Christmas Party

Knowledge is realizing that the street is one-way, wisdom is looking both directions anyway

Editor's Comments:

One more newsletter ready to print! And I can't believe how fast it filled up. If we have this much to share in February, what am I going to do once we start having tours! Seriously, sometimes I struggle to fit in everything I want to include! I know I could leave this or that out, but then it just wouldn't be right. A newsletter in my mind needs to inform, educate, and entertain. So I try to keep a little of all of that every month. Hopefully I'm reaching that goal. If not, you let me know!

Even though it's winter, we still have several options for activities this month, including the Valentines Lunch and a co-outing with the Plain Old A's. Check the calendar and see what suits your fancy!

It's getting close to getting the Old Lady back on the road, and I think I'm looking forward to that. She's sleeping in her barn right now, but she'll be ready to roll when it's time. Hope you will be too!

Happy "A"ing!

Sherry Wink, Editor

NORTHWEST MO MODEL A FORD CLUB MEETING

American Legion Hall, Smithville, MO

January 2nd, 2017 7:00 p.m.

Meeting Opened By: President, Bill Skaggs lead us in the pledge of allegiance. On the screen during dinner and the meeting Sherry Winkinhofer ran pictures of club events held in 2016.

Secretary Report: Minutes for November published in the Road Runner were approved as printed. Sandi Shaw was elected Secretary for 2017.

Treasurer Report: Approved as read.

Bob thanked Ray Meyer for being project manager on our new sound system.

Bob said as he reviewed the books, we were \$1,100 under budget for 2016.

President: By law change: ARTICLE VI – SECTION 2 - Quorum for the Board Meetings to be as follows: Only the President or Vice President can call a Board meeting. To have a Quorum attendance would consist of 2 of the elected Board Members which must include either the President or Vice President, and a simple majority of the filled positions on the current Board. Motion was made by Jim Spawn and seconded by Liz Blakley to accept as listed above. Motion passed.

Bill said the Shake Down Cruise is in the planning stages. Terry is willing to hold a tune up session in his barn one Saturday before the Shake Down Cruise.

New Business: Discussion was held on having a Silent Auction in March. A suggestion of a yard sale for members to sell parts and keep the money was made. A discussion at February board meeting is planned.

A survey sheet was passed out for members to express their likes and dislikes for the past year activities and to offer suggestions for this coming year.

Membership: 44 members and 1 guest, Gary Fleming was present. President stated MAFCA is offering 1 year free membership for new members.

Newsletter/Publishing: Sherry stated on page 2 of the Road Runner every month the club web site name is listed. Any pictures of club activities you would like to share can be sent to the web site and both Sherry and Dave Telles, web master, will receive them.

Activities: Saturday, January 14, breakfast at Big Biscuit at 8:30. Valentine Event being planned. More info to follow.

Meeting adjourned at 7:40 p.m.

Respectfully submitted by Sandi Shaw

MAFFI Newsletter Minute

Dear Model A'ers,

Please remember that MAFFI has 42 videos including a complete set of the Diablo A's Technical Seminars available for loan to MAFFI members and Model A Clubs that support the Museum with a financial gift. Any one of these videos would make a nice program for your club through the winter months while the weather keeps us inside. You can look over the titles at maffi.org (club programs) or on the back of the MAFFI newsletter, the A Preserver. If interested, please email secretary@maffi.org and Janice will take care of your request. As always, 'thank you' for supporting MAFFI and the Model A Ford Museum. It is my hope that all Model A'ers will be able to make a visit to the museum.

Best regards,
Loukie Smith, MAFFI President





Activities

"Departure places and times for events will be published on the Web Site and Newsletter the month prior to the event".

February 18th -Valentine Lunch

See details below

March 23-26th 2017 -MARC Membership Meet

Shipshewana Indiana
No Additional info at this time

March 25th—Garage Night

Terry Richardson
Details at next meeting

June 5-9th—Omaha Regional

Omaha Nebraska

Visit <http://meadowlarks.omahaneb.org/2017/>

Or contact Dale Jergensen (402) 949-0521

Greg Bowden (402) 210-9146

Hold the Dates!

April 1st -Shake Down Cruise

May 20th—Cameron Veteran's Home

June 3rd—Annual Club Picnic (New location -Tryst Falls)

August 11-13th—Platte County Gas and Steam show

If you are planning on joining in on any of the tours or activities, but haven't put your name on a sign-up sheet, let Marvin Taylor know!

Phone: 816-807-6300 or Email: tours@nwmomodela.com That way if it has to be canceled or has a location or the schedule changed, you will be notified!

Next Meeting:

The most popular suggestion for club entertainment from the surveys turned in last month was Bingo. So guess what! February's entertainment will be Bingo!

Remember, if you have ideas for entertainment, tours, or other activities and haven't yet turned in your survey sheet, bring it with you to this meeting and turn it in. Terry is also bringing in a Suggestion boy to put out by the sign-in sheets so additional ideas can be included throughout the year.

We're listening!

Meal Change at the Meetings

The Legion has asked us to consider having a buffet meal for our dinners. So this month, we are giving it a try.

The menu for this month will be chicken alfredo and spaghetti with meat balls, along with soup and salad, corn and green beans, and garlic toast. (No carry outs please). For anyone that prefers, the hamburger/cheeseburger with fries can be ordered instead of the buffet. And of course, it's all you can eat. The Legion is also open to suggestions as what you would like to see on the buffet for the following months!

Valentines Luncheon

Come join us for lunch on February 18TH at the Golden Corral at 8800 NW Skyview (HWY 152 & Ambassador). Plan to meet there at 1:00 PM to join in the fun and conversation. You don't have to have a sweetheart to come, I think everybody in the club qualifies as a sweetheart, so everyone is invited!

The meal will be \$10.99 person and is an all you can eat Buffet that includes steak and shrimp, drinks and desserts!

There will be a signup sheet at the next meeting to help estimate the size of our group. Loni and Sandy Hank are planning to arrive early to reserve the private room for our club so there will plenty of room together.



Plain Ol A Invite

Want to do something different? The Plain Ol A's have invited us to join them on Feb. 25, 2017 to tour "Pompeii: The Exhibit" at Union Station, KCMO. If you want to join in, just meet up with them at 10:00 a.m. at the west entrance. \$12.95 Adult, \$9.95 Child. For more info, call Theresa Guenther at (913) 682 - 2545



Sunshine/Concerns

816-456-4978

Cheryl Taylor is our Sunshine/Concerns lady! If you know anybody in need of a card or phone call, please let her know. And, if you just want to share the news of a happy event, such as a new grandbaby or a wedding, let her know that too!



Deadline for the Next Road Runner

The 20th of the preceding month

Email to roadrunner@nwmomodela.com

Or mail to: Sherry Winkinhofer

14900 Green Briar DR

Smithville Mo. 64089



Club Contact Information:

President Bill Skaggs: info@nwmomodela.com

816-807-6300

All Officers: info@nwmomodela.com

Tours and Activities: tours@nwmomodela.com

Publications: RoadRunner@nwmomodela.com

Membership: membership@nwmomodela.com

Webmaster: webguy@nwmomodela.com

Tech Advisor: techguy@nwmomodela.com

Pictures@nwmomodela.com

Visit www.nwmomodela.com today!

The club website is maintained by

Webmaster Dave Telles

Please email any info, pictures, questions

& suggestions to [in-](mailto:info@nwmomodela.com)

fo@nwmomodela.com



Model A Mystery Part

What is it?

One of the problems with pictures is the lack of scale! Point in case is this next Mystery Part, which appears very similar to last month's part! But it's for an entirely different area of the car!

Do you know? For "Bragging Rights", email techguy@nwmoModelA.com!



January's Mystery Part

I had several guesses on this one, but not quite this particular part!

This is listed as "Emergency Lever Pins" used on the 1930-31 emergency brake cross shaft that goes through the frame rails.. The special grooved pins holds the levers onto the end of the cross shaft.

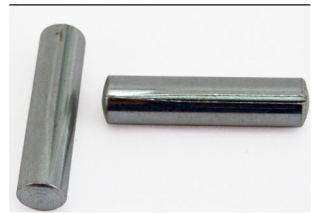


Photo courtesy of Snyder's Antique Auto

Tech Talk

Walt Jones, Tech Director

The Clutch and Transmission

An excerpt from the excellent book "The Ford Model A" "As Henry Built It" discussing transmissions and changes made to them.

The Model "A" employed two types of clutch: the multiple - disc clutch, installed until November of 1928, and the single plate clutch, used until the end of the Model "A" production. In fact, Ford clutch discs through 1948 were interchangeable with the Model "A" clutch.

The multiple dry disc clutch, which was a scaled-down version of the Lincoln clutch, was not new. The multiple disc type was used on the Model "T" and many other cars of that period. It consisted of four driving discs, alternately sandwiched between five driven discs. The driving discs were faced with an asbestos composition on each side. Peripheral teeth on these discs mated with internal teeth of the drum-type flywheel. The driven discs were made of spring steel and had teeth on the inner diameter, which mated with corresponding teeth on the clutch disc drum, which in turn was splined to the clutch shaft. A stiff coil spring of 420-pound pressure clamped all the discs together, so when the clutch was engaged, the entire assembly revolved as a single unit. Depressing the clutch pedal released the spring pressure on the plates, permitting the discs to slip and thus disconnecting the engine from the transmission.

In use, the multiple dry disc clutch often developed a squeal. After heavy use, the teeth of the driving discs would scour the surface of a stop the squeal, have received good service from these clutches. Sometimes the powdery deposits of worn clutch facings gradually built up in the flywheel teeth and prevented the driven discs from disengaging.

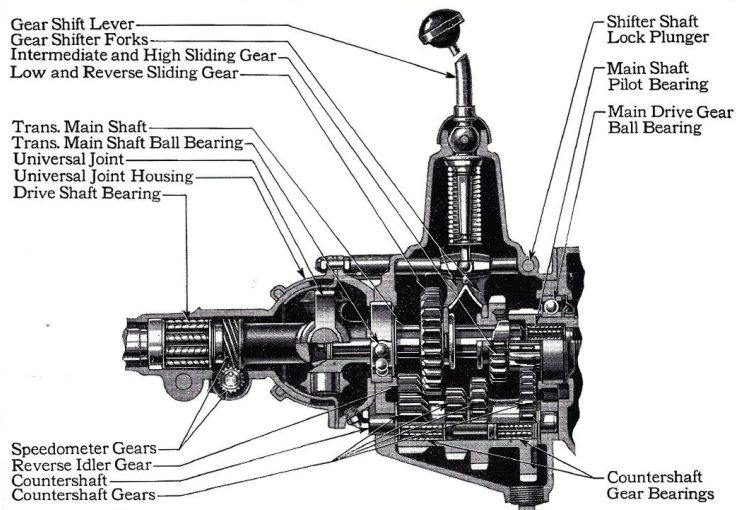
A heavy-duty clutch spring with 455-pound pressure went into production in May, 1928, for use on truck engines. In order to identify these engines, the engine number was stamped with the prefix letters "AA." All other parts of the clutch were interchangeable with the passenger car clutch.

Manufacturing costs and service problems forced the Company to replace the multiple disc clutch with the single plate type. A Ford communication tactfully explained the change as follows: "While the multiple disc is a very fine type of clutch and gives excellent results on the Lincoln and other fine cars driven by careful professional chauffeurs, some of those who drive Fords were careless because it is an inexpensive car and they caused trouble by riding the clutch pedal, slipping the clutch unduly, etc. These were the same drivers who wore out Model "T" transmission band linings so frequently. Also, the multiple disc clutch requires very accurate alignment with the flywheel housing, while the large number of teeth on the discs requires rather costly machinery to manufacture to the Ford standards of accuracy." Thus in

November, 1928, the multiple disc clutch was phased out and the new single plate clutch became standard. The single plate clutch consisted of two major components: the pressure plate and cover assembly and the clutch disc assembly. The clutch pressure plate and cover assembly contained a cast-iron pressure plate, cover, springs and release fingers. The pressure plate, combined with the flywheel, made up the driving members. The driven member was a single steel disc with both faces covered with a friction com-position. It was splined to the transmission input shaft. When the change to the single plate clutch was made, a number of other parts also were changed. Among the changed parts were the flywheel, transmission main drive gear, clutch housing, transmission housing, brake and clutch pedal, brake and clutch pedal shaft, clutch release shaft, clutch release collar, clutch release fork and other related small parts. These parts were not interchangeable from one type of clutch to the other.

The truck clutch was equipped with heavier springs and had a wider disc. In service, these clutches were identified by a red or yellow paint mark on the pres-sure plate cover. In addition, the heavier springs were painted gray.

The Model "A" transmission was the standard selective sliding gear type with three speeds forward and one speed in reverse. This unit was a scaled-down Lincoln transmission. All moving parts were supported on either roller or ball bearings, except the reverse idler gear, which had a bronze bushing. The parts were made of high





Greeting from the Meadowlark Model A Ford Club!

We want the Northwest Missouri Model A Club to be aware that the information to register for the 2017 Model A Regional, scheduled for June 5-9 2017 in Omaha, Nebraska is now available on our website: <http://meadowlarks.omahaneb.org/2017/index.html>

When you go to our website, click on the box marked "Registration", where you can print off the entire registration package. To register, there are four pages that must be filled out and returned to us by mail.

Please pass this information to all your club members. We hope that you will "Join the 'A' Scene in Seventeen" as we gather in Omaha Nebraska for a week of family-friendly Model A fun!

Greg Bowden & Dale Jergensen
Meet Co-Chairs

Out of the Barn

A few members of the club recently helped a 1930 Deluxe Fordor see the light of day after many, many years in a barn! Gary Carrel was glad to have the assist in this endeavor. Gary's dad had brought this beauty home, drove it a little while and then parked in the barn. According to Gary, the dust you see has been there a while. He said it'd not been washed since it was brought home. But it's a beauty! It's all original, inside and out. Check out the pictures of those mohair seats and the pin stripes on the dash! And it only has about 40,000 miles on it too. The guys had to change tires to be able to roll it out of the barn, and apparently two of the tires still had red inner tubes! Who knows, those might have been original too!



Walter Jones and Bill Skaggs share a free MAFCA membership with Gary Carrel.

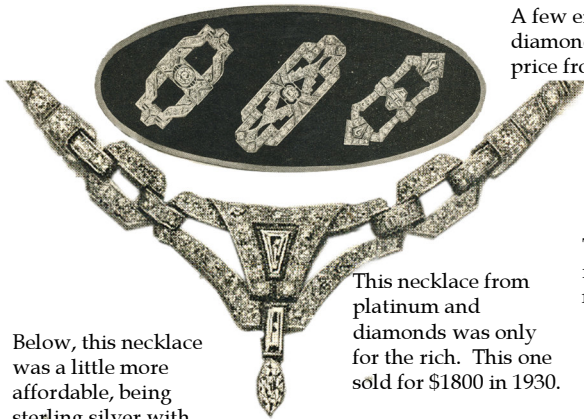


Examples of Art Deco Jewelry

Sherry Winkinhofer

Definition of ART DECO: a popular design style of the 1920s and 1930s characterized especially by bold outlines, geometric and zigzag forms, and the use of new materials (such as plastic) (from the Merriam-Webster dictionary)

The Art Deco style was very popular in the Model Era, although you won't find it listed as such in catalogs from that date. It wasn't until the 60's that the style was given that designation. The name came from the Exposition Internationale des Arts Décoratifs et Industriels Modernes (International Exhibition of Modern Decorative and Industrial Arts) held in Paris in 1925. Art Deco combined modernist styles with fine craftsmanship and rich materials, as well as new modern materials such as plastics. The examples below are from a 1930 Daniel Low Jewelry catalog. Some of these were from diamonds and platinum, some are costume jewelry, but they all look beautiful to me! The Art Deco period is considered roughly between WWI and WWII, so the Model A era is right in the middle of this time frame, making it a great choice for Model A Era jewelry.



A few examples of platinum and diamond pins. These ranged in price from \$350 to \$700.



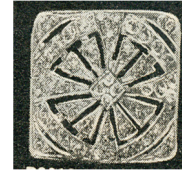
This pin is white metal and rhinestones, making it a nice price of \$4.00



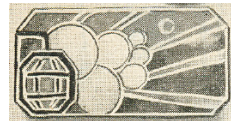
Beautiful earrings in diamond & platinum. \$375 back then!



Sparkly rhinestone shoe buckles were popular at \$2.00 a pair.



This cute little bubble pin is from cloisonné enameled sterling silver, sold for \$1.50



A Bulova watch in 14 karat gold with diamonds & sapphires. \$65!

Below, this necklace was a little more affordable, being sterling silver with faux sapphire, amethyst or topaz stones. It sold for only \$1.50



This lovely bracelet looks more expensive than it is, since it is rhinestones. It was only \$6.00

The US Department of Agriculture's Bureau of Home Economics Radio Service broadcast a weekly 'Housekeeper's Chat' for many years in the first half of the twentieth century. The recipe below is from a 1928 broadcasting. I found it online at theoldfoodie.com

Deep-Sea Pie

2 cups diced salt codfish	4 tablespoons butter
4 cups tomatoes	4 tablespoons flour
1 bay leaf	2 cups mashed potato
6 cloves	½ teaspoon salt, and
½ onion	3 drops tabasco

Soak the codfish in cold water, until sufficient salt has been removed. Then cover, and cook in fresh water for 10 to 15 minutes, or until tender. Prepare a tomato sauce by cooking the spices and seasoning with the tomato for 10 minutes. Strain, and to the tomato juice add the melted butter and flour, which have been blended. When thickened, mix with the drained cooked codfish and pour into a buttered baking dish. Cover the top with mashed potato and bake until the potatoes are brown.



Brands We Still Know

Snickers Candy Bar

Frank Mars was born in Minnesota in 1883. He learned to make candy helping his mother in the kitchen. After graduating high school, Frank began making and selling candy. Eventually, he and his wife Ethel sold candy out of their kitchen, starting a same-day service for the treat.



The 1930's Snickers bar sold for 5¢

In 1920, they moved from Washington state back to Minnesota and started the Mar-O-Bar company. Their first product was the Milky Way candy bar released in the early 20's. This was the most popular candy bar in the US between 1927-29. Mar-O-Bar eventually became the candy giant Mars.

Frank and Ethel also owned a farm in Tennessee that bred race horses. The Snickers bar which was released in 1930 was named after Ethel's favorite horse Snicker.

A Few Smiling Faces from the January Meeting!



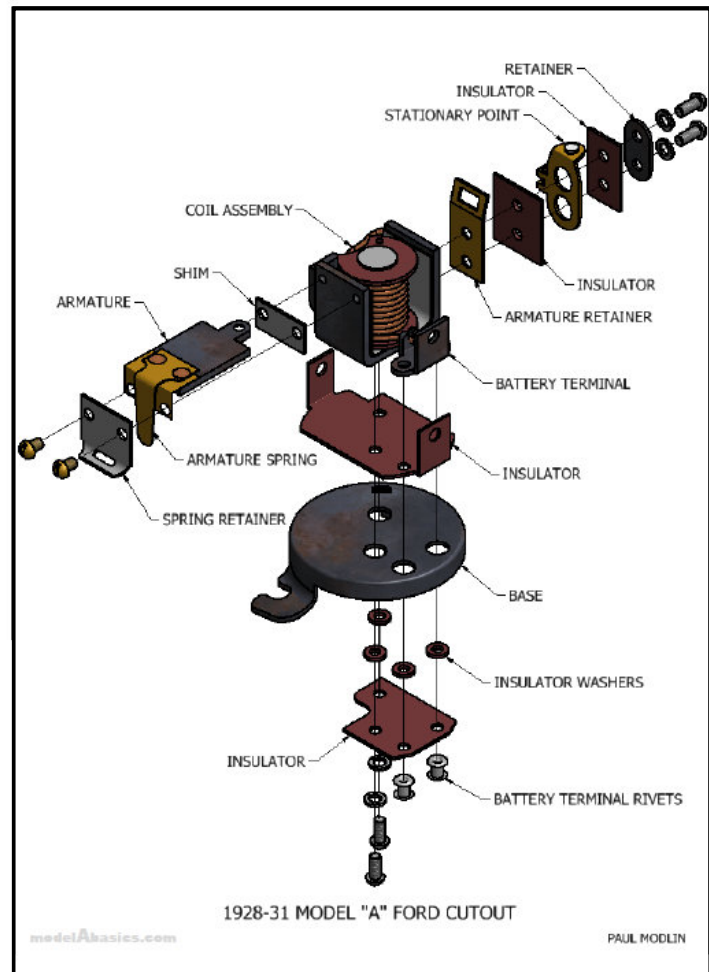
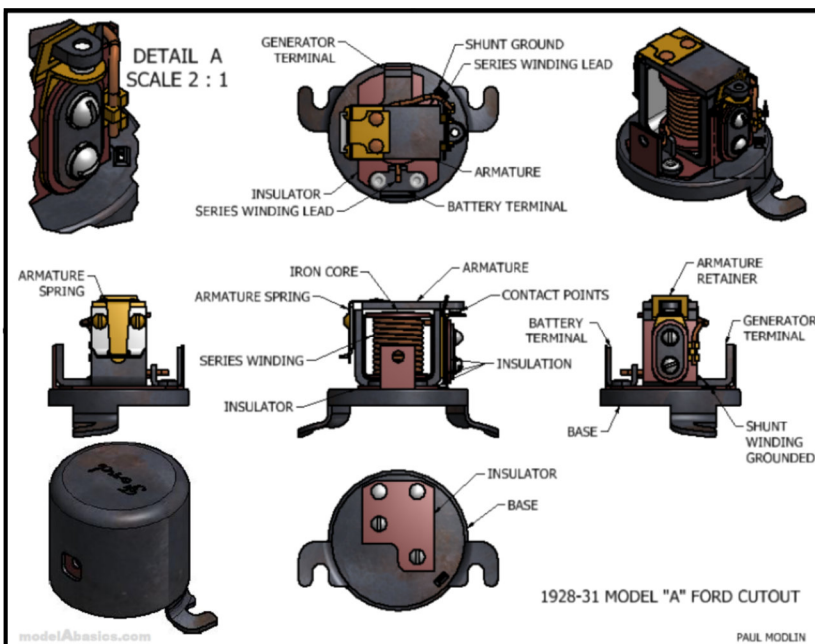
I found some great information and diagrams at modelabasics.com. For our new members, there is some great information there! For our experienced members, there might be some nice stuff as a review! You won't know until you check it out!

Testing Cutout On Car

Equipment:

- 3/4 Ohm Resistor
- DC voltmeter

1. Disconnect the battery wire from the Battery Terminal on the cutout
2. Install a 3/4 ohm resistor to the battery terminal of the Cutout. Connect the other end of the resistor to a good ground. *
3. Start the engine and slowly increase the engine speed
4. The cutout should close between 6.1 to 6.3 volts*. Which will be evident by a sudden drop in the voltage reading.



Cutouts During Model A Production



Beginning to January 1928



February 1928 Only
Note: Round terminal link and held together with rivets



April 1928 to Nov. 1930
Note: No Ford Script, Square terminal link, held together w/spot welds



March 1928 & After Nov. 1930
Same as April 1928 to Nov. 1930 Except for Ford Script



For Sale / Wanted To place an ad send your information to info@nwmoModelA.com, or send to Sherry Winkinhofer

As a service to our members, the area Model A clubs have decided to share our classified ads sections! (this will include Model A specific items only.) Ads will run approximately 3 months unless we are notified that the item is still available.

For Sale: 1930 Fordor Sedan - Blue with Black Fenders \$17,000 12 Volt, New Battery, Hydraulic Brakes, 16" Wire Wheels and Tires, CB, Trunk on Back, Model A Engine and 3 Speed Transmission, Extra Parts: Original 19" wheels, front toolbox, and misc spare parts.

Contact: Gene Morris 913-526-8642 (POA 10/2016)

Wanted: Left rear fender for a 30 - 31 Coupe.

Contact: Don Van Diepen. 515-491- 2958 or 515-961-4114 (CIMA 02/2017)

For Sale: 1929 Model A Fordor. \$12,000.

Contact Lora Jones @ (515) 835-8883. (CIMA 02/2017)

For Sale: Due to the death of Bob McLaughlin, Betty McLaughlin is selling their 1930 Model A Deluxe Roadster. The body of the vehicle is fiberglass. Bob and Betty were members of the Henry Leavenworth Antique Auto Club.

Contact: Betty McLaughlin 913-299-3404 (POA 10/2016)

For Sale: 1930 Model A Huckster - Brassworks radiator, leak less water pump, new head gasket, aluminum timing gear, rebuilt distributor, newer tires. \$12,000

Contact: Scott Forsen 816-863-1567 (NWMO 04/2016)

For Sale: Original 1928/29 right rear Roadster Fender. Equipped with an original aluminum step plate. Removal of this plate would allow it to be used on a Coupe or Cabriolet also. The fender is in fair to good shape and I have it priced right at \$175.00.

Contact: Walt Jones 816-898-8979 (NWMO 04/2016)

For sale: 1930 two door Older restoration Mitchel overdrive good condition \$14,000 chili.canida@gmail.com

Contact: Chili Canida at chili.canida@gmail.com (NWMO 10/2016)

For Sale: 1931 Model A Tudor Sedan. \$13,000 or best offer.

Contact: Ron Kester at 785-543-6769 (POA 02/2017)

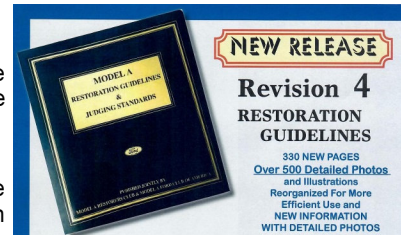
For Sale: Model A Parts: Total Short Block (Needs Babbit) \$175. Crank Shaft \$35. Clutch Assembly \$25. Block (has crack in one cyl.) \$10. 2 - 21 in wheels \$ 15. ea. 21 in Tire, (good spare) \$5. 2- B-6600 oil pumps \$40. ea. Starter \$20. 13670 Auto-Lite Manifold Heater \$50. B-6256A Timing Gear [New] \$30. 2 - B-4235 Rear Axles W/ Gears and new key ways \$75. ea. Engine Stand 7501b \$30. A-3311 Drag link, weld in, Ball Stud \$2. A - 4605-B Drive Shaft W/ torque tube \$40. A-1115 - BH Rear Hub \$30. B- 4209-A Set Std 3.78-1 Rear End Gears [Real nice] \$125. 4025 Rear End Housing Banjo [good] \$25. B-12405-B Champion W16 Y Spark Plugs (Like New) \$2. ea.

Contact: Charlie Volf 515-965-0579 or 515-299-0573 (CIMA 02/17)

Updated Restoration Guidelines Now Available

January 21- Revision 4 of the Restoration Guidelines & Judging Standards are now in stock at the MAFCA Office. All preordered copies have been mailed. If you preordered a copy, you should be receiving it shortly.

The Guidelines remains a collaboration of both MARC and MAFCA. It will be available as a complete volume for \$55 or just the Revision 4 update that you can add to your existing Guidelines for \$30, both plus shipping.

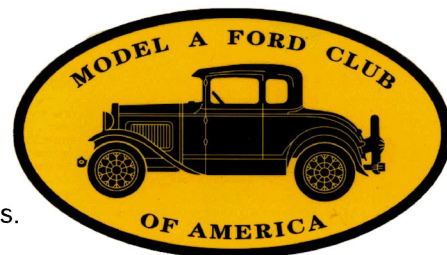


Free Membership Program –MAFCA

Welcome to the New Year! As the year begins, your Board has set a goal to increase membership in 2017 to 17,000. We will need the help of all of our chapters to make this happen. This year, MAFCA will provide each chapter free memberships for friends of the hobby, who have never been members. This program has been ongoing for the past several years with great success. The MAFCA Board of Directors has chosen to continue the program with another spin for 2017. We will give unlimited free memberships. We just ask that they only be given to members who you feel will continue to be a part of MAFCA and renew their membership in the years to come.

The form is available at MAFCA.com. Please feel free to make additional copies to cover your needs. We encourage you to use them to build membership in your chapters.

Please feel free to contact Garth Shreading, 2017 MAFCA Membership Director at Membership@mafca.com or the MAFCA office at 562-697-2712.



MAFCA Is On Facebook Look for MAFCA on Facebook and join the discussions on the MAFCA Informational Page and the MAFCA Group Page. There are links to the Facebook pages at MAFCA.com

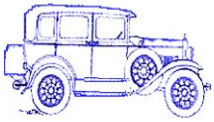
Have you paid your dues for 2017 yet? If not, don't risk this being your last edition of the Road Runner! Right now, while you're think about it, fill out the below form, that's why I printed this form on the front of an advertising page, so you wouldn't loose any articles. If you are renewing, just a name and signature, along with any corrected info is all that is needed. Write that check, and send your renewal in today! See, wasn't that easy!



Northwest Missouri Model A Ford Club Membership Application

www.nwmomodela.com

<input type="checkbox"/> New Membership: <input type="checkbox"/> Renewal:			
Name:		Spouse/Partner:	
Address:			
City:		State:	Zip:
Home Phone:	Member Cell:		Other Cell:
Member Email:		Other Email:	
Month/Day of Birth:	Anniversary:		Month/Day of Birth:
Allow information for club roster or handbook yes <input type="checkbox"/> no <input type="checkbox"/>			
Model A Information			
Year:		Model:	
Indicate Condition: <input type="checkbox"/> Show <input type="checkbox"/> Restored <input type="checkbox"/> Being Restored <input type="checkbox"/> Drivable <input type="checkbox"/> Basket Case (but there's still hope!)			
Year:		Model:	
Indicate Condition: <input type="checkbox"/> Show <input type="checkbox"/> Restored <input type="checkbox"/> Being Restored <input type="checkbox"/> Drivable <input type="checkbox"/> Basket Case (but there's still hope!)			
Membership in National Organization			
<input type="checkbox"/> Model A Ford Club of America (MAFCA)		<input type="checkbox"/> Model A Restorers Club (MARC)	
<i>National affiliation is strongly encouraged but not required</i>			
Membership in other local clubs			
<input type="checkbox"/> Members of Plain Ol' A's <input type="checkbox"/> Heart of America <input type="checkbox"/> Henry's A's <input type="checkbox"/> Other _____			
Auto Insurance Requirements:			
Owners of all cars must meet state mandated insurance requirements for vehicles. The Northwest Missouri Model A Club is not legally responsible for any expenses incurred due to accidents or injuries sustained in club sponsored events.			
Signature:			Date:
<input type="checkbox"/> Enclosed are my dues for membership year January 1 to December 31			\$25.00
<input type="checkbox"/> Enclosed are my dues for partial year membership (Prorated per month; check with the membership director)			\$ _____
Please make checks payable to: NORTHWEST MISSOURI MODEL A FORD CLUB			
<input type="checkbox"/> Send Newsletter by US Mail		<input type="checkbox"/> Email attachment. Will save club postage	
Mail to: Robert Martin 6968 SE Horseshoe Drive Holt MO 64048			



"A" REPAIR SHOP

BOB HESS

12731 CHERRY STREET, KANSAS CITY 64145
816-941-4101 Cell: 816-668-3902

SERVICE - REPAIRS - UPGRADES AND COMPLETE RESTORATION
OVER 20 YEARS EXPERIENCE - MAFCA CERTIFIED MASTER JUDGE

A - Z Model A Parts - Zanes

Ron and Sondra Kester, Owners

773 Central Street
 Glade, Kansas 67639
 Phone: 785-543-6729
 Fax: 785-543-3013

e-mail: 2officegirls@ruraltel.net



DAVID B. BLICKHAN, MBA
 Branch Owner

P 816.746.0080 | M 816.694.2625
 dblickhan@jcgrason.com
 www.jcgrasonkansascity.com

JC GRASON
 Helping Make Retirement Dreams a Reality!

Tom Kautz
 Owner

www.tomkautz.com

KAUTZ  **Electric**
Auto Parts
Auto Glass

Rebuilding Starters, Generators, and Alternators
6volt - 12 volt

920 Commercial St.
 Atchison, KS 66002

Phone: (913) 367-1717

AMERICAN LEGION
 USMC NAVY
 ARMY USAF
 COAST GUARD

Serving ALL Veterans and
 the Community



Remembering
 Those Who Served

Smithville American Legion Post 58
 P.O. Box 158
 Smithville, Missouri 64089
 (816) 532-8115

LOCATED AT:
 Hwy 92 & County Road DD
 Find us on Facebook at:

<https://www.facebook.com/SmithvilleAmericanLegionPost58>

AMERICAN FAMILY
INSURANCE

www.amfam.com

DAVID LAWSON
DAVID LAWSON AGENCY, INC.

5 Victory Ln Ste 104
 Liberty, MO 64068

Bus: (816) 792-4448
 Fax: (816) 792-0633
 Email: dlawson@amfam.com

2014 American Star Certified Agency
 Access Anytime: 1-800-MYAMFAM (800-692-6326)



BRATTON'S

ANTIQUE AUTO PARTS



800-255-1929 Phone
www.brattons.com

800-774-1930 Fax
 1606 Back Acre Circle
 Mount Airy, MD 21771

Your source for Quality Model A Ford Parts since 1976

Charley Vosseller
 Owner

www.crosslinkkc.com

SANDBLASTING
CROSSLINK
POWDER COATING of KC
913-788-COAT

7150 Kaw Dr Kansas City KS 66111

AUTO COLOR & EQUIPMENT

524 E. 23rd Street
 Independence, MO 64055

Phone: 816-254-5630
 Fax: 816-254-5635

TOUCH UP

Aerosols - Bottles

Computerized Color Match Available

www.auto-color.com

Bob Bond's Artistry

Quality
 Craftsmanship

over
47
 years

• Graphics
 • Lettering

• Pinstriping

• Airbrushing

• Flames
 • Gold Leafing

• Logo Designing

• Automotive Art

816-554-1800 1-800 BOB BOND

25612 NE Colbern Rd. Lee's Summit, MO 64086-9508

www.bobbondart.com



Mark Freeman

EAGLE AUTO STRIPPING

Blasting With Plastic, Glass & Sand
Fiberglass, Aluminum, Steel, Any Surface
www.eagleautostripping.net

(913) 334-6331

Fax (913) 334-6333

7300 Kaw Drive (K32)

Kansas City, KS 66111

"Best Strip Joint In Town"



BRASSWORKS

Aries Mufflers

MILT'S MODEL 'A' REPAIR, PARTS & SALES

F.S. Modern Ignitions . Mitchell Overdrives
Overdrive & 4-Speed Transmissions Installed

806 W South Avenue
Blue Springs, MO 64015
hesfrt@sbcglobal.net

Milton Hessefort
816-229-1949
Cell 816-590-4317

"HAVE AN 'A' DAY"



Michael Butcher

1-888-879-6453

email: mike@mikes-afordable.com

www.mikes-afordable.com



Specialising in 1928 - 1931 Model A Ford Parts

Snyder's

ANTIQUE AUTO PARTS

12925 Woodworth Rd. New Springfield, OH 44443

The World's Largest Selection of 1909-31 Ford Parts

FREE Fully Illustrated Catalog

\$10.00 outside the U.S., Canada, & Mexico

**Servicing the Hobby
For Over 50 Years!**

Toll Free Ordering (888) 262-5712 or FAX (888) 262-5713

For technical info (330) 549-5313 or FAX (330) 549-2211

Order On-Line @ www.snydersantiqueauto.com



Powder Coating & Media Blasting

Tammy Abma

Office Manager

Phone: 816.220.3170

tammy@opcpowdercoating.com

3355 SW Eastbound US Hwy 40

Blue Springs, MO 64015

www.opcpowdercoating.com



Invitation to Join
Model A Ford Club of America

~Membership Benefits~

The *Restorer* magazine (6 issues per year)

Technical Support (free via mail or email)

MAFCA Chartered Chapters in your local area

National Meets - National Banquets - National Tours

MAFCA also produces publications for sale including

Restoration Guidelines & Judging Standards; Paint & Finish Guide;

Hardware Standards, A series of publications on How to Restore Your

Model A; Era Fashion Guidelines; a number of Other publications

related to the Model A Ford and its era

Please select your membership type: ☐ US Membership \$40.00

☐ US & Canada Air Mail \$50.00

☐ International
\$56.00

First Name: _____ Last Name: _____

Spouse's First Name _____ Last Name: _____

Address: _____

City: _____ State: _____ Zip: _____

Country: _____ Phone: _____
email: _____

☐ Permission to publish my phone number in future Membership Rosters

☐ Optional Initiation Package (Only \$10 extra)

For New Members Only! Back issue of *The Restorer*, 1 - MAFCA Lapel Pin

MODEL "A" RESTORERS CLUB

6721 Merriman Rd

Garden City MI 48135

(734) 427-9050 office

(734) 427-9054 fax

modelarestorers@sbcglobal.net



Membership Application

2016 Dues- New or Renewals () US

Membership \$45.00

() US Air Mail \$57.00 () Canada \$55.00 ()

International \$61.00

New Members Only- Partial Membership:

J/A, S/O & N/D issues only!

() US Membership \$24.00 () US & Canada Air

Mail \$34.00 () International \$42.00

IMPORTANT:

**Make checks payable to Model "A" Restorers Club
(M.A.R.C.)**

**All Memberships from outside the U.S. are to be
remitted by International Money Orders in U.S. Funds
(drawn on U.S. Bank) or credit card. And a personal
check drawn on U.S. bank (U.S. funds must stamped
on check.)**

CREDIT CARD INFORMATION:

() Visa () Master Charge () Discover Credit Card () American Express

_____

EXP Date _____ CVV2 Code # _____ Phone # _____

(Last 3 numbers on back of Credit Card)

Membership # _____ E-mail _____

Name: _____

Address: _____

THE ROAD RUNNER

% SHERRY WINKINHOFFER

14900 GREEN BRIAR DRIVE

SMITHVILLE MO 64089-8831