

The ROAD RUNNER



MAFCA Charter

MAFCA "Newsletter of Excellence" 2015, MARC "Award of Excellence" 2015

MARC Region

Officers

President:	Loura Cook
Vice President:	Bill Matteson
Secretary:	Mary Lou Matteson
Treasurer:	Bob Martin
Activities/Tours :	Doug Scott
Technical	Walt Jones
Concerns/Calling	Etta Ridgeway
Membership/Public Relations:	Liz Blakley
Merchandising:	Amy Lang
Raffle	Glenda Dunlap
Newsletter/Publishing:	Sherry Winkinhofer
Property:	Terry Richardson
Director:	Terry Richardson
Director:	Bill Skaggs

Birthdays

Ron Anderson	05/05	Gil Wanklyn	05/18
Cleta Mallory	05/10	Milt Hessefort	05/19
Ray Meyer	05/11	Peggy Richardson	05/21
Harvey Roseberry	05/16	Sonny Norris	05/25

Anniversaries

Jim & Sandi Shaw 05/01
 Daryl & Laura Lawrence 05/04
 Lyman & Etta Ridgeway 05/08
 Steve & Leann Pogue 05/14
 Bob & Nancy Hess 05/17
 Bob & Donna Martin 05/17

Monthly Meeting

May 7th, 2018

6:00 PM dinner available at special price, 7:00 PM meeting
 The American Legion, 92 Hwy & DD, Smithville MO

Board Meeting

May 17th

The 3rd Thursday of each month,
 7:00 PM, Woodneath Library Center
 8900 NE Flintlock Rd, Kansas City, MO 64157

Technical Meeting & Breakfast Club-KC

Big Biscuit in Liberty

Please join us every Wednesday 7:00 am to "whenever"
 at the Liberty Corner Shopping Center, at 840 Hwy 291
 (816-429-5314)

Technical Meeting & Breakfast Club-St Joe

Every Monday 8:00-10:00 AM
 Hy-Vee 201 North Belt Highway, St. Joseph

Ice Cream & Socializing

Every Saturday evening 6:00 PM
Moved to Wendy's in Liberty
 3 Victory Dr, Liberty, MO 64068

Presidents Comments:

April has seen us in typical Missouri weather.....from freezing cold, snow, rain, sunshine and everything in between. Still the brave went on our first adventure in our A's with our "shakedown cruise" on the 14th. In spite of a cold day, we had a great turnout for our visit to Watkins Mill and lunch at Lawson. We were all happy to be out driving for the first time this year (with no breakdowns).

Rain kept us from our tour of Ensley Gardens in Topeka on the 21st, however. Still we have lots of events to look forward to in May, including Comanche Gardens Iris Farm tour on the 12th and our annual visit to the Veterans Home in Cameron on the 19th.

On a sad note, we lost one of our long time members, Tim Osborn, and we extend our sympathy to his wife, Joy. John and Jody Layne lost their home in a fire on the 20th and the club rallied to assist. Thanks to all who took part in their aid.

Terry and Peggy Richardson added a new granddaughter to their family on the 27th. Congratulations to both the proud parents and grandparents.

Looking forward to the Regional in Springfield on June 4th - 8th where we will be hosting the car games on Wednesday, the 6th. Also plan to come to our annual club picnic on the 23rd at Tryst Falls Park.

Thanks to Doug Scott and all the others for their work planning lots of events and activities for the rest of year. Jim Spawn is working hard on the Dust Bowl Jamboree in September and Bill and Mary Lou Matteson are even scoping out a new venue for the Christmas party already! I hope everyone is looking forward to taking part in everything that is planned to make this the best year ever! Come join in on the fun!

Loura Cook, President.

*Experience enables you to recognize a
mistake every time you repeat it.*

Editor's Comments:

Finally I think Spring weather is here to stay and I think all we Model A'ers are happy about that. Hopefully we won't have to cancel any more of those great tours that Doug keeps putting on the schedule for us! And the good news is that the Old Lady is now happily awaiting her next tour here in her new digs in Liberty!

My brother Richard trailered her down for me last week so I would be ready to go. I may not have everything else down here, but the most important thing on my list is! Hope to see you all on one of the next tours, it's been a while since I was able to join in!

Happy A'ing

Sherry Wink
Editor

NORTHWEST MO MODEL A FORD CLUB MEETING

American Legion Hall, Smithville, MO

April 2, 2018 7:00 p.m.

Greeters: Bill and Mary Lou Matteson.

Meeting opened by President Laura Cook welcoming members and guest. After Pledge of Allegiance, Bill deferred to Harvey Roseberry for introduction of Loring Miller, guest speaker. Miller gave an entertaining and informative program on early history and development of the Jefferson Highway and National Auto Trail System.

Secretary Report: **Motion to approve minutes** as printed in Road Runner by Jody Layne, seconded by Sandy Hank, Motion Passed.

Treasurer Report: Opening Balance \$11,188.96, Income \$1,362.01, Expenses \$553.69, Ending Balance \$11,997.58.
Motion to accept by Jim Spawn, seconded by Jody Layne, Motion passed.

Old Business: Laura said the Platte Co. Ladies Tea was enjoyed by all who attended. She noted necessity of sign ups for the Springfield Regional. She welcomed John and Beth Osborn, back for spring/summer season from their new home in Arizona, and Ron and Theresa Gunther, Heart of America Model A Ford Club members.

Activities: Doug Scott thanked Terry Richardson for hosting another Garage Day, tuneup of Walt's car was successful. Other activities announced: Dust Bowl /Poker Run grant request has been approved with receipt of formal "Notice to Proceed" letter; spring Shakedown Cruise postponed to April 14 due to weather forecast; April 21 tour of Tulip Garden, Topeka, is scheduled; May 12 Comanche Gardens, Gower, and May 19 Cameron Veterans Home tours are planned. Doug asked for a show of hands of those interested in a June trip to Arrow Rock Theatre & Warm Spring Ranch. Based on response plans will continue.

Concerns/Calling: Etta sent sympathy card to Joy Osborn in passing of husband Tim Osborn, our longtime loyal member. Get Well cards sent to: Tim Osborn, Bill Skaggs, Clyde Pace, Sherry Winkinhofer, Richard Dahms. April Birthdays and Anniversaries announced.

Membership/PR: 2018 Roster can now be purchased at \$2.00 per copy.

Newsletter: While no report from Road Runner, Sherry Winkinhofer announced that the Club's new website is up and running. She thanked Dave Telles, former Club member and webmaster, for his help in conversion from old to new site. Sherry received a Certificate of Appreciation from the Club for her work in programming the new website. Nelson Young was announced as the new NWMoModela.com Webguy.

Property: Terry reported the Club supply cabinet is now in good condition with equipment inventory available for members' use.

Attendance: 58 members 9 guests

Adjourned 8:20 p.m.

Respectfully submitted by Mary Lou Matteson.

Highlights from the April Meeting!

Our speaker was Loring Miller from Leon Iowa who gave a rousing talk on the Pine to Palms Route, the Jefferson Highway. He even broke out into song once or twice (check out the video on our Facebook page)!

And guest Frank Justice made sure to let us know that there is a Jefferson Highway Museum in Smithville, so maybe we have a new place to stop by on a tour. Stay tuned!





Activities

"Departure places and times for events will be published on the Web Site and Newsletter the month prior to the event".

May 4-6th—Lawrence Swap Meet

Friday noon to Sunday noon
Douglas County 4-H Fairgrounds 1/4 mile N of E 23d St on Harper St.
Lawrence Kansas
<http://www.lawrenceregionaaca.com/events/swapmeet.html>
785-843-AACA

May 12th—Comanche Gardens

DETAILS ON PAGE 5

May 19th—Cameron VA Home

We are scheduled at the Cameron Vets home at 10 AM
DETAILS ON PAGE 5

June 3-8 – A's in the Ozarks" Regional Meet

Springfield, Missouri --
Hosts: Heart of America Model A Club
Info: Lance Burton, 816-809-8648.

June 24-29 -- MAFCA National Convention

Reno-Sparks, Nevada
Hosts: Northern California Regional Group
<http://ncrgmafca.com/2018MAFCAConvention/2018index.html>

June 24-29—MARC National Meet

Branson MO
For more info, contact Dan Bixby (816) 213-8437
Email: mbixbys@msn.com
http://model-a-ford.org/event/come-a-dancin-n-branson-in-2018/?instance_id=160

June 29—Arrow Rock & Warm Springs Ranch DETAILS ON PAGE 5

Hold the Date!

June 15-17—Lathrop Antique Car, Tractor, & Engine Show
June 23rd—Club Picnic


If you are planning on joining in on any of the tours or activities, please sign-up at the meeting or let Doug Scott know in advance at (469) 323-6426
That way if an event has to be canceled or has a location or the schedule changed, we will do our best to make sure you are notified!

May Meeting: *Mark Morris, Kansas City Star Award winning reporter/editor/author (now retired) will share experiences from his 31 year career covering crime and law enforcement in our Missouri/Kansas regions.*

Sounds like a "Don't Miss" meeting!!

With Sympathy

Tim Osborn, long time member and friend, passed away March 29th. Our hearts and sympathy go out to his wife Joy and the rest of their family. I will always remember Tim as having always had a smile on his face. He will be greatly missed.



New Members!! Please update your roster

Daryl & Laura Lawrence
9424 N. Askew Ave.
Kansas City, Mo. 64156
816-547-8951
daryl.lawrence@yahoo.com

Birth Day: (Daryl) 11/26, (Laura) 6/22, Anniversary: 5/4
They have a 1929 and a 1931 Model A!

Daryl Powell
Box 6, Lathrop, Mo. 64465
Birthday: Nov. 9th
daryl.powell@midwaytrucks.com
816-885-2905
Daryl has a 1929 Sport Coupe!

Update: Sherry Winkinhofer
Please change my address to:
1459 Woodland Ave, Liberty Mo 64068
(It's a long story, same house, different address!)



Sunshine/Concerns
(816) 719-9997



Etta Ridgeway is our Sunshine/Concerns lady! If you know anybody in need of a card or phone call, please let her know.
And, if you just want to share the news of a happy event, such as a new grandbaby or a wedding, let her know that too!

Deadline for the Next Road Runner

The 20th of the preceding month

Email to swinkinhofer@hotmail.com
Or mail to: Sherry Winkinhofer
1459 Woodland Ave
Liberty MO 64068

Club Contact Information:

President Loura Cook: 816-632-1776
All Officers: nwmomodelaclub@gmail.com
Publications: nwmomodelaclub@gmail.com
816-519-2630

Visit **www.nwmomodela.com** today!

Please email any info, pictures, questions
& suggestions to
nwmomodelaclub@gmail.com



Model A Mystery Part

What is it?

*Do you know? For "Bragging Rights",
email*

techguy@nwmoModelA.com!



Photo courtesy of Snyder's
Antique Auto

Last Months' Mystery Part

These are 1928-1929
Windwing pads.

Did you know?



Photo courtesy of Mike's
A-Ford-Able Parts

Walt's Old Time Tech Tip

From one of our exchange newsletter, The Harbor Light newsletter from Torrance California.

It Stalls at a Stop

by Tom Endy

This is a common complaint often heard from Model A owners. My experience has been that it has to do with the Zenith carburetor. On most forums numerous theories are offered; many of them contradictory.

Every once in a while I encounter a Zenith that defies being fixed so that it does not stall at a stop. It can be very frustrating. However, I think I may have hit upon the problem.

I recall attending a Zenith seminar years ago at a MAFCA meet conducted by Herman Reise, who was an old fellow since passed away, that knew quite a bit about Zenith carburetor restoration. He made a statement that stuck in my mind. He said that "there hasn't been a decent throttle plate produced in 50 years". Unfortunately he did not elaborate.

Occasionally I find a throttle plate where someone has filed a groove in it right where it approaches the hole in the throat of the carburetor for the idle circuit. I have never figured out why this is done. I think that doing this would upset the flow of the proper amount of air to the idle circuit.

Snyder's Model A catalog has an interesting statement concerning the reproduction throttle plate they offer. "Made of brass as original with correct angles on the edges. USA".

Recently I was rebuilding two Zeniths that road tested perfectly until I came to a stop, then the engine stalled. Nothing I did to the Zeniths resolved the problem. The float level was set to different heights a number of times, the throttle shaft was replaced, the throttle bosses re-bushed, the float replaced. The float valve was replaced with a Viton tip. Flow tested jets installed. All the passage ways were open. It was then I began to think about the throttle plate itself.

If the throttle plate does not close on the idle circuit hole in the throat properly it could adversely affect the flow of air to the idle circuit and the transfer from run to idle would be disrupted.

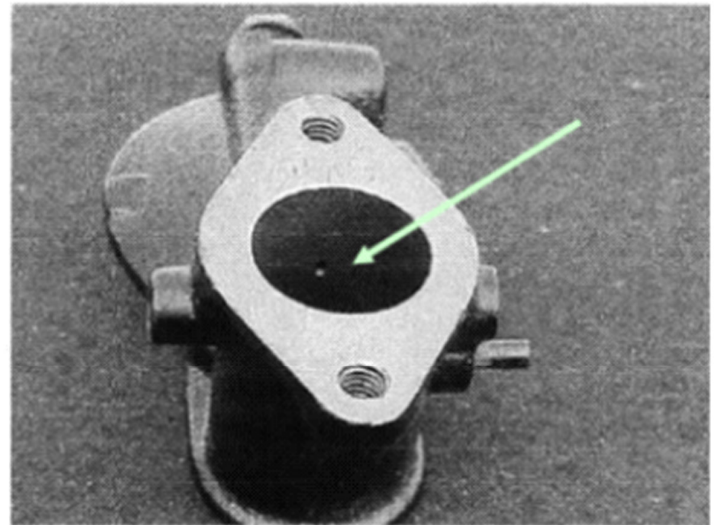
Maybe old Herman was on to something. Maybe back in the IC. Whitney days the Model A Kingdom was flooded with throttle plates with the angles not ground correctly, that has continued to the present day.

I ordered two throttle plates from Snyder and installed them in the two Zeniths that both stalled when coming to a stop. Problem resolved!

This was quite a revelation. It could be that there is a multitude of incorrectly ground throttle plates floating around, or it could be that some of the originals that have survived have become worn such that they do not close on the idle hole properly.

Whatever is the case, when rebuilding a Zenith I will be installing new throttle plates from Snyder. I suspect some of the other better suppliers, such as Bratton's, are offering the same throttle plate. However they don't say so in their catalog.

The small hole in the throat of the upper casting allows air to flow into the idle circuit when the throttle is closed. The throttle plate closes such that half of the hole just peeks above the closed throttle plate.



The small hole in the throat of the upper casting allows air to flow into the idle circuit when the throttle is closed. The throttle plate closes such that half of the hole just peeks above the closed throttle plate.

UPCOMING TOURS!

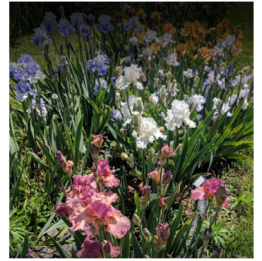
Comanche Acres Iris Gardens Tour

This tour will be on Saturday, May 12th to see the multitude of beautiful iris flowers at Comanche Acres. We've attempted this tour in the past but the weather did not cooperate, so maybe this is our year!

KC group--Meet at the McDonald's in Smithville by 9:15 and we'll depart at 9:30, taking a scenic route to the gardens.

St. Joe group--Suggest you gather at a convenient location and meet us there at 10:00. Address is 12421 SE State Route 116, Gower.

Afterward, we have lunch planned for the entire group at James Kennedy's Family Restaurant in Plattsburg.



Missouri Veteran's Home Tour

This tour will be on Saturday, May 19th and is one of our annual outings. The veteran's in Cameron sure do enjoy seeing our Model As as it brings back fond memories for many of them. And it's a great opportunity for many of them to get outside on a nice spring day. We're scheduled to be at the Veteran's Home from 10:00-11:00 that day. Here's how to get there.

KC group--Meet in Lathrop at the Cenex "Fast Break" gas station, corner of Highways 116 and 33. Be there by 9:15 as we depart at 9:30.

St. Joe group--Suggest you gather at a location and drive together to Cameron, arriving by 10:00.

Afterwards, we have lunch planned for the entire group at Washington Street Eatery in Cameron.



Lyceum Theatre in Arrow Rock & Warm Springs Ranch Overnight Trip

Note: Due to limited availability, info on this trip was sent out email with a short deadline. If you are interested in this trip, please check with Doug at 469/323-6426 to see if there is any remaining availability.

Friday evening, we will be attending the historic Lyceum Theatre to see a performance of "Crazy for You". Cost is \$29 per person (assuming we have a minimum # for their group rate).

Dinner following the performance will be at the J. Huston Tavern, is a historic tavern building built in 1834. It is the oldest continuously serving restaurant west of the Mississippi River with more than 180 years of continuous service to the public.

Saturday, we will tour the Warm Springs Ranch, to tour the grounds & stables of the Budweiser Clydesdales. • Cost is \$15 per person. • We have pre-purchased "X" number of tickets and you'll need to reimburse Doug for yours.

Hotel suggested is the Super 8, 420 Americana Road, Boonville. Phone 660/882-2900.

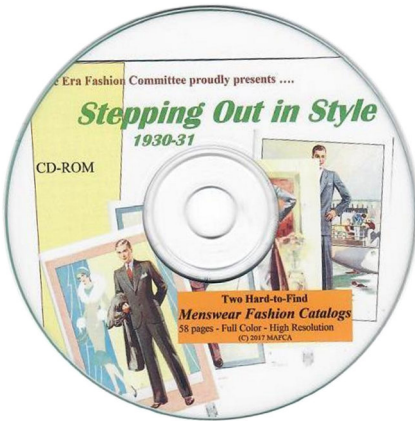
This will be for Friday, June 29. Rates start at about \$57. You will need to contact the hotel directly to reserve your room. I would suggest that you get a rate with FREE cancellation in case you are not able to attend.



Stepping Out in Style

By Sherry Wink

The MAFCA Era Fashion Committee has released a new DVD featuring two men's catalogs from 1930-31. It is now available on the MAFCA web store, with two options for purchasing. You can order a DVD for \$11, shipping included, or do a direct download for \$5!



If you haven't checked out all the other fashion publications available from MAFCA, make a trip to their website soon. From DVD's such as this to reprints of actual Era patterns, the knowledge to be found there is fantastic!

The picture to the right is just one of the more unusual examples of the information contained on this DVD. There are lots of details and pictures to help you pick the right suit (and/or uniform) to dress era!



The below two versions of this unique recipe are from a 1928 cookbook from St. Mark's M.E. Church in Brooklyn New York. It is called "Silvery Jubilee Cook Book of tested Recipes". The entirety of this fun book can be found at <https://babel.hathitrust.org/>

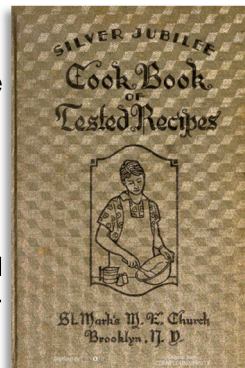
English Monkey

1/2 cup bread crumbs soaked in a large cup sweet milk
1 tablespoon butter
1 egg, beaten
1 cup cheese crumbs
Salt and pepper to taste

Cook slowly milk, crumbs, cheese; add beaten egg. Stir continually while cooking. Serve on toast or hot crackers.

English Monkey

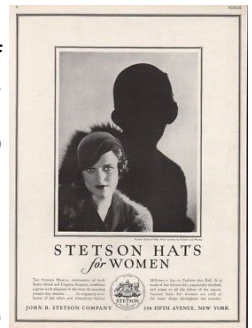
Put to soak 1 cup bread crumbs in 1 cup of milk about 15 minutes before using. Melt 1 large lump of butter in a saucepan. Stir in 1 scant cup of cheese, diced. Cook a few minutes, then add bread and milk, and 1 egg, beaten. Salt and paprika. Cook until smooth. Then put in a buttered dish and bake for about 1/2 hour. Before cutting up the bread to put into milk, I spread mustard on the bread.



Brands We Still Know

Born in Orange, New Jersey, in 1830, John B. Stetson was born into a family of hat makers. He spent his teen years working in this craft. After developing TB in 1860 Stetson traveled west to recuperate, ending up initially in St. Joseph Missouri. However he soon headed to Colorado to join in the Gold Rush. While mining and hunting around Pike's Peak, Stetson used the felting technique his father had taught him to make waterproof blankets and also made a hat with a high crown and a broad brim that could protect the wearer from the sun and rain. Stetson returned east in 1865 to develop his new hat. He borrowed \$60 from his sister and rented a small workshop in Philadelphia. Stetson sent letters, along with a sample hat, which he called "Boss of the Plains", to dealers in the West, asking for an order of a dozen. By 1915, Stetson had become the world's largest hat company, with 5400 workers turning out more than 3 million lids annually.

Interesting note: Stetson also produced women's hats, operating a millinery department from the 1930s to 1950s. The selection include the Cheviot beret as well as the pillboxes, tricorneres and cloche styles.



A 1931 ad from Vogue Magazine

Spring Shakedown Cruise

Submitted by Doug Scott

There were 25 members, 11 Model As and 3 modern cars which participated in this year's version of the Shakedown Cruise. Bill Auch and Charlie Ishmael put together a wonderful route that took us through the rolling hills and winding roads of Clay County.

We started in Smithville, drove over the dam and around the scenic north side of Smithville Lake, went past the boyhood home of Jesse James, and arrived at Watkins Mill State Park. Unfortunately, the temperature was too chilly for the outdoors walk to the house and mill. (Maybe we can reschedule this tour on a warmer day.)

After some tire kicking and story telling in the parking lot, we drove the short distance to Lawson for lunch at Catrick's Cafe. Even though the weather could have been warmer, it was a fantastic start to this year's tour season.





For Sale / Wanted To place an ad send your information to swinkinhofer @Hotmail.com, or mail to Sherry Winkinhofer

As a service to our members, the area Model A clubs have decided to share our classified ads sections! (this will include Model A specific items only.) Ads will run approximately 3 months unless we are notified that the item is still available.

For Sale: 1929 Model A 4-door Phaeton, body-off restoration 7 years ago, looks great, drives great. Beautiful paint and LeBaron-Bonney upholstery and top. Trunk, side curtains, white-wall tires, turn signals. Has won many trophies. Fun to drive. Car is in Orlando, Florida, area. \$32,000 OBO

Contact: Jim Cannon 832-692-2288 (NWMO -01/2018)

For Sale: 1931 Model A Victoria in very good shape. \$22,000.

Contact: Cecil Dolecheck 641-464-2913. (CIMA 04/2018)

Wanted: A 1930-31 deck lid

Contact : Gary Hileman 316-303-7589 (ICTA 05/20/2018)



For Sale: 1929 Ford Roadster Pickup Early '90s complete restoration. Rebuilt engine 2015. Fold down top with complete side curtains and top boot. Dual side mounts. Runs and drives well. \$17,500

Contact: Bob Benton at 402-493-1908 (CIMA 05/2018)

For Sale: 1931 Model A Rumble Seat Coupe older restoration. new tires, wiring harness with turn signals.

Contact: Bill Skaggs 816-807-6300
billskaggs.ahm@gmail.com. (NWMO 12/2017)

For Sale: Trunk Rack for '28 - '31 \$50.

Contact: John McClain @ 515-988-1085 (May)

For Sale: This truck is a late 1928 or early 1929 Model AA truck 82-A with some custom features. It was restored 5 years ago. The transmission is a 3 speed with a car clutch. The emergency brake sits in front of the shift lever with a squeeze handle. The bed and stake racks are fitted with yellow oak wood. It has a custom made rear bumper and trailer hitch receiver addition. The rear drive is a worm gear with top speed of 28 to 30 mph. The engine starts and runs great and was overhauled during restoration. The electrical system is 6 volt with turn signals. The hubcap has been replaced on the wheel missing one in the pictures. It drove to the MAFCA National Meet 2016 in Loveland, Colorado.

Contact: Kevin Mabry, Fort Collins, CO
kwmmabry@gmail.com

Victor W. Page, Inventor, Author, and Technical Genius

After running across this ad in a 1929 catalog, I was curious about the author who had a Model A instruction book released so soon after the car was released. A little research later, and I'm very impressed! It seems that Victor Wilfred Page was a mechanical genius and quite a prolific writer!

Born in 1885, Victor started his automotive career in 1905 with the "Page" automobile, built in partnership with his brother. The first Page was a two seater Runabout powered by a 2 cylinder OHV air cooled engine that developed 10 horsepower. It had a two speed transmission and shaft drive. The 1907 Page Runabout was equipped with a larger 20 horsepower four cylinder engine. Only about 25 automobile of both types were every made. But by 1920, Victor Page was one of the leading authorities on automobiles and aviation motors. He was in the military in World War I (his last books are listed under Major Victor W. Page) and worked with the early pilots and their planes. He wrote several books on flying which were used by the Navy flying classes up until the early sixties.

Victor wrote over 40 books in his career with subjects including automobiles, motorcycles and aviation, and including a few about the Model A Ford. Many of books are still available, both used, and in reprint and are still valuable and useful information for old car enthusiasts.

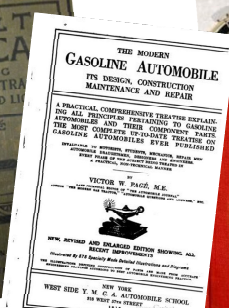
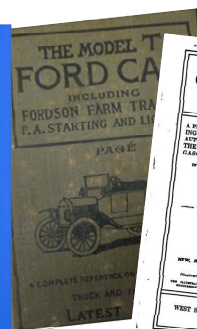
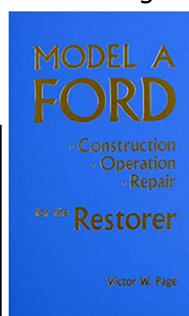
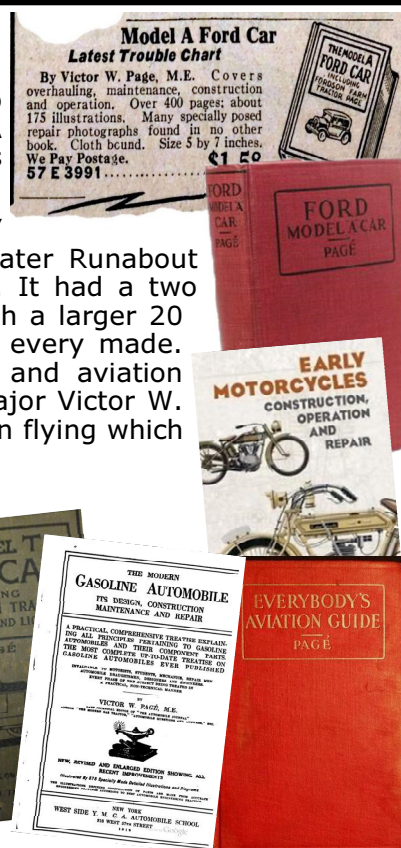
Titles I found on the Model A (I found at least 3 different Publishers reprinting these, so it's hard to tell if they are all different or just titled different).

1929 Model a Ford Car

1931 Ford Model "A" Car and "AA" Truck, Construction, Operation, Repair

1931-Ford Owner's Handbook of Repair & Maintenance:

1931-Model A Ford Construction Operation Repair for the Restorer Models T and A Ford Cars: Also Fordson Farm Tractor



Tea on Broadway March 18th

Those of us that made it to this lovely event had a great afternoon and Lura even won a door prize! Each table was decorated to the theme of a popular Broadway show, and the imagination went wild. The food was beautiful and delicious. All in all it was a lovely outing during a cold rainy week



A Few Fun Photos from the Web



It's not being towed by the boat in front. The car has been temporarily converted to a motorboat. It's powered by the car's rear wheels, via rollers connected to a drive, and steering input comes from the front wheels, sitting in steerable rails attached to the rudder.



THE ORIGINAL CHICKEN COUPE.
Found on MAFCA Facebook page

Spotlight on Advertisers

Bratton's Antique Auto Parts is a small company specializing in **QUALITY** parts for 1928-1931 Model A Fords. Bratton's was started in the mid 1970's by Walt who began restoring & polishing the stainless steel components for the Model A, so he could fund the restoration of his personal Model A. During the early years Walt worked a 9-5 job with the federal government and then came home and worked 6-10 polishing stainless steel. As his reputation for quality stainless restoration became known customers started asking him hey I also need this part or that part. As more customer's requested more and more parts Walt decided to step out and leave the federal government and started Bratton's Antique Auto Parts full time.

In an effort to produce and sell the most accurately made part he could, Walt would identify parts that were of marginal quality, then get a copy of the prints and send this out for quoting and production. Walt's philosophy has always been if I don't want to put the part on my own car, then I am not going to sell it. With this mind set firmly established we are now making over 500

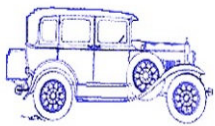
different parts and working with over 300 different vendors.

After graduating college in 2000 Walt's youngest daughter Debbie began working full time in the business doing the accounting parts of the business to let her mother Martha enter into early retirement and spend time with 2 of her grandchildren while Debbie was working. Than around 2002 Debbie's Husband Jeff started working at the shop pulling orders, packing and whatever else needed to be done around the shop.

Walt is now semi-retired and enjoys traveling around the world, while Jeff & Debbie continue to run the business under the same philosophies that Walt established all those years ago.

BRATTON'S offers over 90% U.S. made parts. Our current catalog contains 186 pages of Model "A" Parts, Each With a FULL Description and Illustration and Many Full Page Schematic Drawings to Help Identify Parts and Assembly Sequence.

New services for the Model "A" enthusiast includes Steering Box Rebuilding, Brake Drum Turning, Brake Shoe Installation, Arcing Brake Shoes to Drum, and Centering Shoes to Backing Plate.



"A" REPAIR SHOP

BOB HESS

12731 CHERRY STREET, KANSAS CITY 64145

816-941-4101 Cell: 816-668-3902

**SERVICE - REPAIRS - UPGRADES AND COMPLETE RESTORATION
OVER 20 YEARS EXPERIENCE - MAFCA CERTIFIED MASTER JUDGE**

A - Z Model A Parts - Zanes

Ron and Sondra Kester, Owners

787 Central Street

Glade, Kansas 67639

Phone: 785-543-6729

e-mail: 2officegirls@ruraltel.net

**Serving ALL Veterans and
the Community**



**Remembering
Those Who Served**

AMERICAN LEGION
USMC NAVY
ARMY USAF
COAST GUARD

Smithville American Legion Post 58

P.O. Box 158

Smithville, Missouri 64089

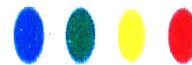
(816) 532-8115

LOCATED AT:

Hwy 92 & County Road DD

Find us on Facebook at:

<https://www.facebook.com/SmithvilleAmericanLegionPost58>



AUTO COLOR
& EQUIPMENT

524 E. 23rd Street

Independence, MO 64055

TOUCH UP

Aerosols - Bottles

Computerized Color Match Available

PHONE: 816-254-5630

FAX: 916-254-5635

www.auto-color.com

www.bobbondart.com

**50
YEARS**



25612 NE Colbern Road Lee's Summit, MO

816-554-1800 1-800 BOB BOND

BRATTON'S

ANTIQUE AUTO PARTS



800-255-1929 Phone

www.brattons.com

800-774-1930 Fax

1606 Back Acre Circle

Mount Airy, MD 21771

Your source for Quality Model A Ford Parts since 1976

**Tom Kautz
Owner**

www.tomkautz.com

KAUTZ

Established 1916



**Electric
Auto Parts
Auto Glass**

**Rebuilding Starters, Generators, and Alternators
6volt - 12 volt**

**920 Commercial St.
Atchison, KS 66002**

Phone: (913) 367-1717

"HAVE AN 'A' DAY"

Mike's

Michael Butcher

1-888-879-6453

email: mike@mikes-afordable.com

www.mikes-afordable.com



Specialising in 1928 - 1931 Model A Ford Parts

Commercial advertising space is available for \$25 per annum for a business card size space (approximately 2 x 4) or \$50 per annum for a quarter page (approximately 4 x 4). These ads are also included on our website at www.nwmomodela.com For more info, contact us at nwmomodelafordclub@gmail.com



New and Used Antique Parts

BRASSWORKS
Aries Mufflers

MILT'S MODEL 'A' REPAIR, PARTS & SALES

F.S. Modern Ignitions • Mitchell Overdrive
Overdrive & 4-Speed Transmissions Installed

403 Cypress St
Grain Valley, MO 64029
hesfrt@sbcglobal.net

Milton Hessfort
Cell 816-590-4317

Snyder's

ANTIQUÉ AUTO PARTS

12925 Woodworth Rd. New Springfield, OH 44443

The World's Largest Selection of 1909-31 Ford Parts

FREE Fully Illustrated Catalog
\$10.00 outside the U.S., Canada, & Mexico

*Servicing the Hobby
For Over 50 Years!*

Toll Free Ordering (888) 262-5712 or FAX (888) 262-5713
For technical info (330) 549-5313 or FAX (330) 549-2211
Order On-Line @ www.snydersantiqueauto.com



PROFESSIONAL TAX PREPARATION

Most returns prepared for \$100 or less!!!

Includes "Long Form", cross-state returns and KCMO Earnings Tax
Higher fee applies for Schedules C, E and other uncommonly used forms



816-746-0080 to schedule an appointment

Payment via check or cash



DAVID B. BLICKHAN, MBA
Branch Owner

P 816.746.0080 | M 816.694.2625
dblickhan@jcgrason.com
www.jcgrasonkansascity.com



-Membership is Strongly Encouraged in Both of these Excellent National Organizations-



Model A Ford Club of America

Join on line at *MAFCA.COM*

~Membership Benefits~

The *Restorer* magazine • Technical Support • Local Chapters • National Meets • Era Fashion Guidelines

• "How to Restore Series • Judging Standards and

Restoration Guidelines

Optional Initiation Package

For New Members Only

1 — Back issue of *The Restorer*

1 — MAFCA Lapel Pin

Dues per year are

U.S. Membership- \$50

Canada/Mexico Membership - \$60

International Membership - \$70

New Membership

Name _____

Spouse's Name _____

Address _____

City _____

State _____ Zip _____



Model "A" Restorers Club

6721 Merriman Rd

Garden City MI 48135

(734) 427-9050 office

(734) 427-9054 fax

Find Membership forms at

<http://model-a-ford.org/>

2018 Dues- New or Renewals () US Membership \$45.00

() US Air Mail \$57.00 () () Canada \$55.00 () International \$61.00

**New Members Only- Partial Membership:
J/A, S/O & N/D issues only!**

() US Membership \$24.00 () US & Canada Air Mail \$34.00 () International \$42.00

IMPORTANT:

Make checks payable to Model "A" Restorers Club (M.A.R.C.)

All Memberships from outside the U.S. are to be remitted by International Money Orders in U.S. Funds (drawn on U.S. Bank) or credit card. And a personal check drawn on U.S. bank (U.S. funds must stamped on check.)

THE ROAD RUNNER

% SHERRY WINKINHOFFER

1459 Woodland Ave

Liberty MO 64068