

The ROAD RUNNER

MAFCA "Certificate of Continuing Excellence" 2010, MARC Newsletter of the Year 2010

MAFCA Charter

MAFCA "Newsletter of the Year" 2009, MARC "Award of Excellence" 2011

MARC Region



Officers

President:	Malcolm McIntyre
Vice President:	John Kunkle
Secretary:	Sandi Shaw
Treasurer:	Bob Martin
Activities/Tours :	Cheryl Taylor & Sherri McIntyre
Technical	Ray Meyer
Concerns/Calling:	Karol Russell
Historian:	Vicky Roseberry
Membership/Public Relations:	Liz Blakley
Merchandising:	Mary Ann Jones
Newsletter/Publishing:	Sherry Winkinhofer
Property:	Nelson Young
Webmaster:	Dave Telles
Director:	Bob Russell
Director:	Walt Jones

Birthdays

Clyde Pace	11/01	Ted Alexander	11/17
Grace Sansom	11/01	Mary Graham	11/17
Geneva Rothrock	11/03	Joy Osborn	11/17
Pat Wishon	11/04	David Pellersels	11/23
Cara Skillman	11/07	Phillip Schroeder	11/24
Vicki Paxton	11/12	David Allen	11/25
Kim Kerr	11/13		

Anniversaries

Malcolm & Sherri McIntyre	11/01
Junior & Liz Blakley	11/01
Harvey & Vicky Roseberry	11/08
Stan & Clea Mallory	11/28
Marvin & Cheryl Taylor	11/29

Monthly Meeting

Nov 3rd

6:00 dinner available at special price, 7:00 meeting
The American Legion, 92 Hwy & DD, Smithville MO

Board Meeting

November 20th

(The 3rd Thursday of the Month, 7 pm , Mid-Continent Library
Boardwalk Shopping Center, Barry Road and I-29

Technical Meeting & Breakfast Club-KC

Every Wednesday 6:00 -10:00 AM
Hy-Vee, 207 NW Englewood, Kansas City MO

Technical Meeting & Breakfast Club-St Joe

Every Monday 8:00-10:00 AM
Hy-Vee 201 North Belt Highway, St. Joseph

Ice Cream & Socializing

Every Saturday evening 6:00 PM
Big Burger, 4700 NE Vivian
Kansas City MO 64119

Presidents Comments:

Now that Fall is officially here and the leaves are turning colors the club has still been busy. We just completed a great tour to Richmond and the Ray County Museum / former county Poor House, followed by a great lunch at Jeffrey Kyles.

Next month's events are the Fall Foliage Tour November 1st and then the Veteran's Day Parade on the 11th, so there is still time to participate in club events before the driving season winds down. I'd like to thank everyone that has made all of the year's events so successful, and primary that is all of you who continue to participate and show such enthusiasm for the club and our cars.

Tours are already being planned for the Spring and of course everyone is gearing up for the Regional next year so the great momentum we have in this club keeps on going. I will miss the November club meeting so John will be getting some early practice for his presidency next year.



Sometimes you succeed.... and other times you learn.

Editor's Comments:

It's hard to believe it's almost the end of touring season already. I haven't been able to go on near as many tours as I wanted to! I guess that's mostly my own fault as the club has certainly had a lot of great activities all summer long!

But, alas, my schedule was just so full this summer that something had to give. But you can bet that next year, it won't be the Model A'ing that I miss out on now that the Old Lady has most of her mechanical issues worked out (I hope!)

I'm still looking forward to the last few events, especially the Veteran's Day parade. If you have not taken part in that event, this would be a good year to do so! It's one of my favorites, and I can tell you that the Veterans really appreciate it.

It's awe inspiring to drive that long route and see so many young soldiers from Fort Leavenworth along the way, and to see all the many veterans, male and female, old and young, that line the route. Driving along, looking them straight in the eyes and saying "Thank You!" to as many of them as possible seems the least I can do.

Happy "A"ing.



Sherry Wink, Editor





Activities & Regional Events

"Departure places and times for events will be published on the Web Site and Newsletter the month prior to the event".

November 1st: Fall Foliage tour

See details below
Leaving at 8:30 sharp!!

Meet at 8:30 at the McDonalds 3121 S 4th St, Leavenworth
Depart at 9:30 for parade lineup.
Lunch after parade—location determined day of parade

November 9th—Sunday Dinner—Fried Chicken/Ham

American Legion, 92 Hwy & DD, Smithville MO
Sunday at 11:00 AM
Fried Chicken and Ham, Green Beans, Mashed Potatoes and
Gravy Salads, Lemonade and Desert.
Adult donation is suggested at \$10.

December 3-7th—MAFCA Awards Banquet

Little Rock AR
<http://www.modelacentralar.com/#!blank/cb9l>
Info: Sammye Harrill 501-352-1877

November 11th - Veteran's Day Parade

Joint club event—Leavenworth KS

December 14th—Annual Christmas Party

St. Joseph MO
Details on page 8

If you are planning on joining in on any of the tours or activities, but haven't put you name on a sign-up sheet, let Cheryl or Sherri know!
Phone: 816-456-4978 or Email: techguy@nwmomodela.com That way if it has to be canceled or has a location or the schedule changed, you will be notified!

Next meeting:

Milt Hessefort will talk about Model A Fords. John is not sure what the final program will consist of but it should be fun! See you there!

*Our sympathies
to the family of Dan Wantland who passed away October
23rd.
Dan was a true Model A gentleman.
We will miss him and his smiling presence in our extended
Model A family .*

Help Needed With Raffle Prizes

The club's raffle at the end of each monthly meeting is a great fundraiser for the club, annually equaling the March Silent Auction. In order to continue to make the raffle successful, we need donated items from club members.

If you have items that can be used for the raffle, or you would like to donate to the cause, please contact Mary Ann Jones.

David Allen is in St. Luke's hospital in Smithville Missouri Southside—I hear he would like to have a little bit of company!

Fall Foliage Mystery Tour

The fall foliage mystery tour is being lead by Bill Auch and John Osborn, and will be leaving the American Legion Hall in Smithville at 8:30 am SHARP on November 1. We will start gathering at 8:00 am.

This event will be a wonderful fall foliage tour that includes a unique architectural building and a new lunch spot for the club. Reservations are required for both the architectural building and lunch locations. Please contact Bill Auch or John Osborn if you have already signed up and you need to change your plans or if you want to be added to the list.



Sunshine/Concerns



Karol Russell is our Sunshine/Concerns lady! If you know anybody in need of a card or phone call, please let her know.

And, if you just want to share the news of a happy event, such as a new grandbaby or a wedding, let her know that too!

Call 816-628-3929

Deadline for the Next Road Runner The 20th of the preceding month

Email to roadrunner@nwmomodela.com

Or mail to: Sherry Winkinhofer
14900 Green Briar Dr
Smithville Mo. 64089



Club Contact Information:

President Malcolm McIntyre
info@nwmomodela.com
All Officers: info@nwmomodela.com
Tours and Activities: tours@nwmomodela.com
Publications: RoadRunner@nwmomodela.com
Membership: Webmaster:
webguy@nwmomodela.com
Tech Advisor: techguy@nwmomodela.com

Visit **www.nwmomodela.com today!**

The club website is maintained by
Webmaster Dave Telles
Please email any info, pictures, questions &
suggestions to **info@nwmomodela.com**



Northwest Missouri Model A Ford Club Meeting
American Legion Hall Smithville, Mo.
October 6, 2014 – 7:00 p.m.

Vice President, John Kunkle, opened the meeting with the pledge of allegiance. The program for the evening was given by Jim Spawn. It was a presentation on the KC assembly plant during model A times. He had many slides of the plant inside and out.

Secretary's Report: Motion was made to approve minutes as published in the Road Runner. Minutes

Treasurer's Report: Starting A motion was made to accept report as read. Motion approved.

President: Malcolm read a thank you card from Dan Wantland's family for the help the club members provided on the silent auction held at Dan's house. Malcolm said the Art of the Car held at the city market in Sept., had 16 model A's participating.

Vice President: John thanked Jim Spawn for his excellent presentation tonight. The Atchison parade will be Oct. 25, starting at 2:00 p.m. for those wishing to participate. He thanked those club members who let him ride with them in 3 different parades recently since he is having car troubles.

New Business: Clarence Lawson asked for volunteers to help this Friday at the Lathrop Fairgrounds gas station. 1200 school children will be touring.

Membership – 56 members present tonight.

Activities/Touring: Oct. 18 – Richmond Historical Society Museum. Nov. 1 – Fall Foliage tour meeting at the Legion Hall and leaving at 10:00 a.m. Nov. 11 – Veterans Day parade in Leavenworth. Dec. 14 – Christmas Dinner at Molina Country club in St. Joe. Dinner starts at 12:30.

Concerns/Calling: Karol said she had sent a Thinking of You card this month to Laura Cook. Grandparents card to Rhonda & Scott Forsen. Sympathy cards to Gladys & Clarence Lawson on the death of her brother. Eddie & Marilyn Griggs on the passing of Eddie's father.

Publications – Sherry said as she will not be attending the next few tours. Please send her pictures and articles if you do attend.

Technical – Ray said he took the photos of the part this month in the Roadrunner not John Osborn as it stated. John was the winner with the correct answer. Last month's part was radiator mount pads.

Historian: Vickie advised us the MARC dues for next year will be \$40.00. Please send her any pictures of the Weston parade that you have.

Merchandising: Nothing to report.

Properties: Nothing to report.

Regional Chairman – Harvey said the breakfast club formed in St. Joe is a big success. Tim Osborn was elected president when he went to get a cup of coffee.

The committee members for the regional worked on the food menus with the hotel today. Some raffle items are being donated already. A Phillips 66 visual gas pump will be picked up soon as the big ticket.

Meeting adjourned at 8:10 p.m. Respectfully submitted by Sandi Shaw.

MAFCA BOARD OF DIRECTORS' MEETING, FRIDAY, JULY 18, 2014, PUYALLUP, WA

HIGHLIGHTS

Revision 4 Update from JSC: Doug Clayton gave an update on Judging Standards Revision 4. The Judging Standards Committee is working diligently to complete this Revision 4 and their goal is to have this information ready to print shortly after the first of 2015.

Restorers Class Evaluations: Carl Becker reported there were 12 vehicles evaluated at the Northwest Regional Meet in Bend, OR. The NW Regional Meet was used as a test run. The system is still in the developing stages and will be fine-tuned as they go along. There were 31 registered vehicles for evaluation at the 2014 National Convention in Puyallup, WA.

National Conventions: 2016 Loveland, CO

National Tours:: 2015 Lobsters & Lighthouses, Maine, 2017 Northwest Tour – Circle Tour starting in Olympus, WA (WA and Victoria, Canada)

National Award Banquets: 2014 Little Rock, AR

Jim Spawn Wins International Automotive Media Award: Jim Spawn, Editor of The Restorer has won the International Automotive Media Award. Congratulations Jim!

Policy changes: P301 – National Convention Guidelines, P3S01-A – National Convention Agreement, P2S06-F – Membership Director

Welcome to a new MAFCA Chapter: The Charter for the Maine A Crankers of Limington, Maine was approved by the Board. Welcome to MAFCA!

New Holiday Card: A new holiday card was chosen and will be advertised for purchase shortly.

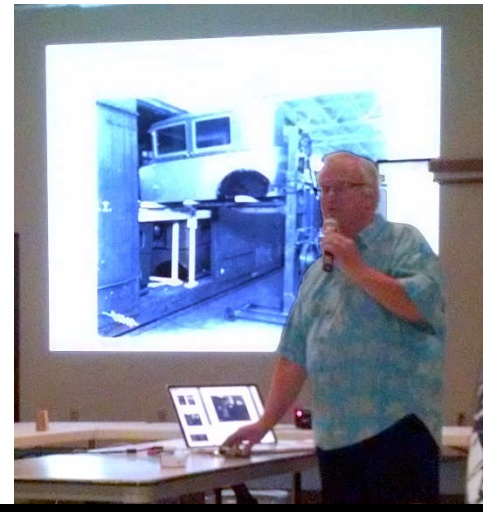
Nominating Committee Final Report: The following seven candidates have been approved to be on the ballot for the upcoming Board of Directors election: Dave Brockman, Jay McCord, Garth Shreading, Mark Smith, Frank Whitney, Paul Wilson and Trudy Vestal. The ballots will be mailed to the membership in August.

Meeting October 6th 2014

Our October meeting featured Jim Spawn speaking about the Kansas City Ford Assembly plant and the Model A days. Jim gave a great talk about the history of the plant in Kansas City, including a slide show to highlight many of the details. He also brought in a few unique pieces of history relating to the plant. He shared this rare employee badge that he passed around and even brought in a great office chair he had managed to obtain from the facility. It was an interesting and enjoyable presentation, and I know everyone enjoyed it as much as I did!



The rest of the meeting was taking care of the normal business of the club, including updates on the upcoming 2015 Regional and the remaining tours of the 2014 season. Still a lot of fun in store for Model A'ing this fall! Come join us!



Atchison KS Halloween parade October 25th.



No written report on the parade, but from the pictures provided by Harvey and Vicky Roseberry and John Kunkle, it looks like a great time was had by all!



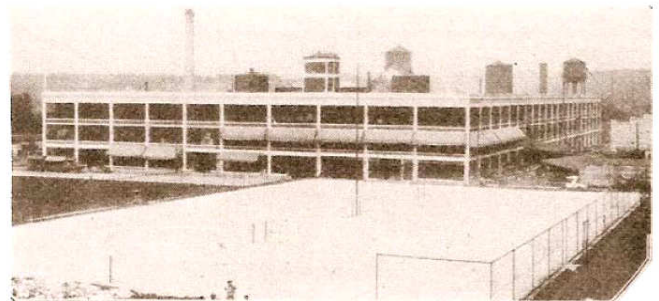
Uh-Oh! Mysterious parts found in Tim Osborn's oil pan!

October 18th: Guided Tour of Ray County Museum

Unfortunately, the pictures for this are tied up in a technical glitch, so watch next month's Road Runner for an article!

Ford Motor Company

KANSAS CITY, MISSOURI



FORD'S KANSAS CITY, MISSOURI ASSEMBLY PLANT

LOCATION: 1025 WINCHESTER AVENUE
MILES FROM DEARBORN: 793
ASSEMBLY PLANT PRODUCTION CODES: KC
PARTS ARRIVED FROM DEARBORN BY: RAIL
OPENING DATE FOR MODEL A FORD PRODUCTION: JANUARY 23, 1928
CLOSING DATE FOR MODEL A FORD PRODUCTION: UNKNOWN

TOTAL PRODUCTION:

1928...40,647

1929...85,118

1930...45,584

1931...15,701

TOTAL...187,050

Weston Parade October 4th

Model A's as far as the eye could see were lined up for the Apple Fest at Weston, a very popular parade indeed! Of course, since everyone was IN the parade, we got no pictures OF the parade.

But I received a few nice shots from John Kunkle of the great time that was had by everyone after the parade when they visited one of our favorite restaurants, Cook's Café! John said to label that last picture "Who got the last piece of John's Osborn's pie?" Hmmm, wonder who!



Art of the Machine—City Market August 28th

It was a beautiful day for a car show—perfect temperatures, blue sky! And you could tell by the amount of cars that turned out —16— and the amount of people that showed to look at them—a lot!. Everyone seemed to enjoy this outing immensely, both club members and the public that spent all afternoon admiring our cars. We had a lot of families coming by and many kids that were excited to learn more about the Model A, and of course, to ahooga the horns!



Ladies Coats

By Sherry Wink

These are a few of the winter coats as advertised in the 1929 Montgomery Wards catalog. Coats of wool and tweed were very popular, although not the only options available. Fur collars were also well represented, but not mandatory as can be seen by the selection below. Notice that all the coats appear to have only one button with a fairly large overlap fastening to the left side of the front. And all the coats note having pockets which probably helped keep track of gloves!

Coat A is from all wool broadcloth, with a "Moufflon" fur collar. Moufflon is actually a fine sheep's wool from a specific European wild sheep.



Coat B is all wool Poiret Sheen (a fine twilled fabric), a slightly fancier look., but no fur collar.

C is also wool poiret sheen but with a squirrel fur collar. (Yes, squirrel fur.)

D. is a wool suede with a squirrelette fur collar. Apparently squirrelette fur is actually rabbit fur dyed to resemble the blue grey Siberian squirrel.

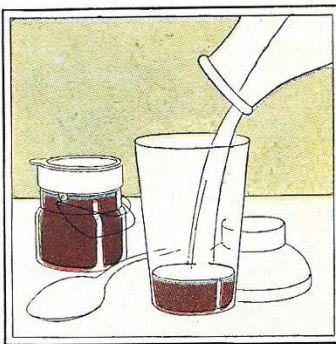
E. is again wool Poiret Sheen but with a squirrelette collar.



This is an unusual recipe from the 1928 ad on the right for a form of cold chocolate drink made from coca.

The Fountain Way for Syrup

1/2 cup Baker's Breakfast Coca
1 cup cold water
1 1/2 cups sugar
Dash of salt
2 teaspoons vanilla



Mix and stir over direct heat until smooth. Stir in sugar and salt until dissolved. Boil for 3 minutes, add vanilla, then pour into a glass jar. Seal it and keep it in the ice chest. This syrup will keep for weeks.

For a cooling chocolate drink, add 4 tablespoons of syrup to each cup of milk and shake it with cubes of ice into a foaming frosted satisfying drink.

Brands We Still Know

In 1764 James Baker and John Hannon started importing beans to the Massachusetts to make baking chocolate. The name Baker's wasn't used until 1779 after Hannon was lost at sea. In 1852, Samuel German, an employee, created a sweeter baking chocolate and it was named German's Sweetened Chocolate. Over the years other types of chocolate products were added. In 1927, the company was bought by General Mills. In 1928 Baker's Chocolate released its first milk chocolate product

Cooling, frosted chocolate drinks whenever you like—at home

TAKE, frosty glass! A foaming chocolate drink! In the whole world of beverages there's nothing more satisfying! It's universal—the delight in chocolate flavor. And now you can have this flavor in chocolate drinks at home—easily, quickly.

Experts of Walter Baker & Company have prepared a leaflet giving recipe for six delicious chocolate drinks. Ask your grocer for one of these leaflets—or send us your name and address on the coupon below.

Among the recipes, for example, is chocolate mint! As cooling as a draft from a mountain brook, and unlike so many summer drinks not made with cocoa, it's natural. It's the throat—and more; it sends you back to work or play with freshened vigor. You know how good Baker's Cocoa is when it is poured hot over cracked or cubed ice into tall glasses. But wait till you try this new way! Keep in mind the ice-box a jar of cocoa-syrup, quickly prepared at your convenience, always ready to be drawn upon at a moment's notice—the fountain way.

The syrup will keep for weeks. And all you do when you want a cooling chocolate drink is to add 4 tablespoons of syrup to each cup of milk, and shake it with cubes of ice into a foaming frosted satisfying drink. (Your fruit jar makes a splendid shaker.) Pour into your tall sparkling glass—and there you are!

Each of the six summer drinks described in our leaflet is a happy adventure. Try them—and invent still others!

Send the coupon below for a generous trial package of Baker's Cocoa and a leaflet of recipes!

Walter Baker & Co., Inc.
110 Irving Street, Boston, Mass.
A General Mills Company

Name _____
Address _____
City _____

August 1928 Good Housekeeping

Interesting note: A newspaper printed a cake recipe based on the "German's sweet chocolate" calling it "German chocolate cake," a name we are still familiar with!

Ad from Good Housekeeping Aug 1928

Model A Quiz

Question: What is this Model A part?

For "Bragging Rights", put your answer on a postcard and send it to:

Ray Meyer, 710 NW Rosaceae Drive
Blue Springs MO 64015

or email Ray at techguy@nwmoModelA.com



Photo courtesy
of Ray Meyer

August Quiz Question

Question: What is this Model A part?

Answer: A front spindle bolt locking pin

This month's winner was John Osborn!



New! The first respondent correctly guessing the mystery part will win one raffle ticket for the monthly meeting!

Tech Article

Ray Meyer, Tech Director

This article was found on the internet, copied from the Ford Model "A" Car and Model "AA" Truck Engine Chassis Manual.

Engine Lubrication; Principle of Operation

The engine lubrication system is an exclusive Ford development. It is a combination of pump, gravity feed and splash system with oil reservoir in the valve chamber.¹

The oil pump is the gear type and is located in the bottom of the oil pan. It is run by a gear on the camshaft as shown in Figs. 4 and 5. It is enclosed in a fine mesh wire screen through which the oil is filtered before it is pumped into the valve chamber². The screen is surrounded by a shield so that the oil is pulled through it, rather than flowing in by gravity. The oil flows into the valve chamber in a continuous stream whenever the engine is running, but is in no sense a "forced" feed. It is rather the capacity of the pump being delivered in a smooth flowing stream.

The principal purpose of delivering the oil to the valve chamber is to provide direct gravity feed lubrication to the bearings of the crankshaft and camshaft. However, it also supplies exceptional lubrication for the valves, giving quieter action.

Small pipe openings lead down from the valve chamber to all the main crankshaft and camshaft bearings and oil flowing down these by gravity provides an abundance of lubrication. The bottom of the valve chamber is so arranged, through the use of small inbuilt darns, to provide reservoirs of oil for each main bearing pipe opening.

As the engine rests in the chassis on a 3-degree angle, sloping to the rear, the oil arriving in the valve chamber flows back, filling the first reservoir, then over the little dam, filling the second reservoir, and then over again to the third and last reservoir. From this point the overflow oil is carried by an external oil return pipe down to the front end of the tray in the oil pan where it flows back over the tray, filling the troughs through which the connecting rods are lubricated and from which all other moving parts are sprayed by the splash system. From the tray the oil flows to the bottom of the oil pan to be pumped back again.

¹ :Classified according to the types of lubrication systems in Dyke's Automobile and Gasoline Engine Encyclopedia, this would be termed a "splash circulating" type.

² Oil is carried to valve-chamber from the oil pump through the inside of housing surrounding the pump drive shaft, passing over the distributor gears to a point where it connects with a tube leading to the front compartment of the valve chamber.

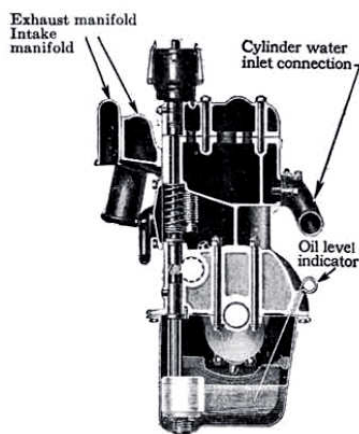


Fig. 4. Sectional end view of engine showing how the oil pump (also distributor) is driven by a gear on the camshaft. The oil level indicator is also shown.

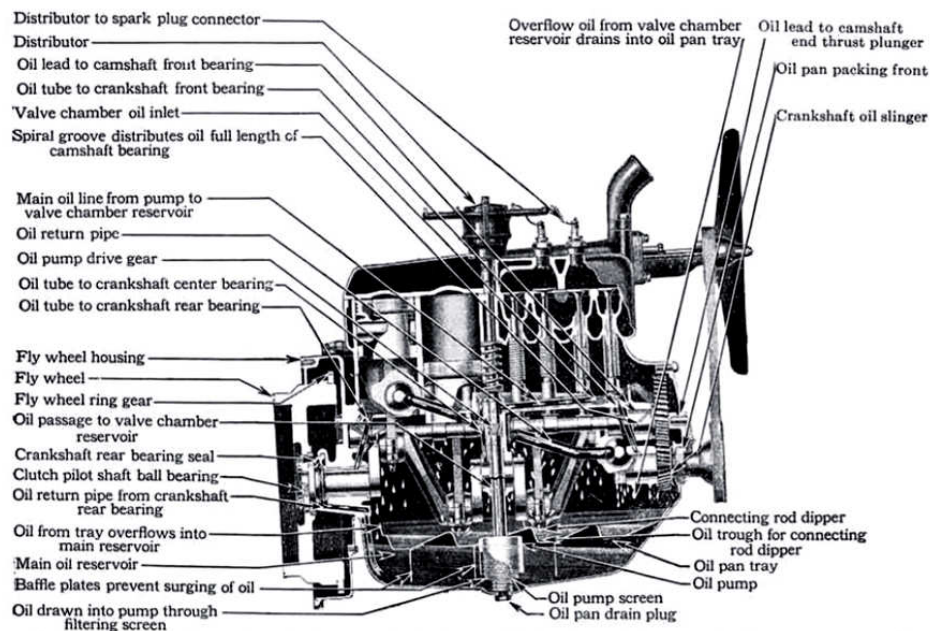


Fig. 5. Engine lubrication system, Ford model "A." Engine rests in chassis on a 3 degree angle, sloping to the rear which gives a more direct drive to the rear axle eliminating friction and wear to a great extent.

November Regional 2015 Report

Harvey Roseberry

Regional 2015 only eight months out. Working with the different Regional committee chairmen our plan is coming together. All the big items are in place now our next step is to convert information to paper.

Karol Russell our registration chairman needs to have the final registration form ready by January 1. Our plan is for committee chairmen and club members to meet again to review schedules and make adjustments as needed. This next very important meeting will be scheduled when the different chairmen's information is ready for paper. Special thanks to all club members who have contributed their time and talents to make Regional 2015 a work in progress. Questions or concerns about Regional 2015 feel free to talk with myself or Leland.



Regional Raffle Item

John Osborn and Bill Auch got the first limps of our Regional 2015 raffle item. Gas Pump Heaven located in Omaha, NE made this reproduction visible gas pump for our Regional.

The Wayne 615, 6 gallon pump is power coated, lighted and stands over 7 foot tall.

Thanks go out to Bill and John for their needed help unloading, and assembly of gas pump.

Mary Ann Jones our Regional raffle chairperson will handle ticket sales, \$5.00 each or 5 for \$20.00. All proceeds from visible pump will go to support 2015 Regional.



Another Generation of Model A'sers Coming Up!

Liam Taylor is enjoying envisioning driving his Grandpa Marvin Taylor's new 1929 Pickup! Even in the picture with his dad David, you can tell Liam is thinking "That's my seat!". No doubt this one is going to be in the family a long time!

Grandma Cheryl Taylor says Liam just loves this truck ever since they brought it home!



Christmas Party, 12:00 PM, December 14th

Moila Country Club 701 N Noyes Blvd, St; Joseph, MO
\$25 per person



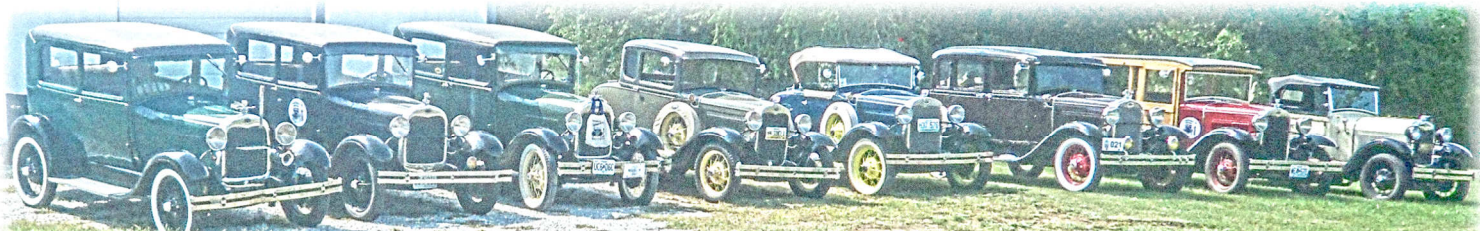
The dinner will be a buffet with a chicken and beef entree, potatoes, vegetable, rolls, salad, dessert, and coffee, tea, and water. Entertainment for the event will be the singers Cool Breeze. Please wear your best vintage to show off your Model A spirit!

There will be lots of fun, a little bit of business (Election of next years officers), and some great food! Remember, if you're not there, you may wind up on the ballet!

There will be a gift exchange again this year for those that want to participate. If that's you, bring a gift with a value of at least \$15. There will be a ladies table and a men's table. Remember, Model A appropriate gifts are always the most fun!

Remember, reservations and payments are due no later than December 4th. A signup sheet will be at the next meeting or email info@nwmoModelA.com or you can send in your checks made out to the club to:

Bob Martin, 6969 SE Horseshoe Drive, Holt MO 64048



For Sale / Wanted

As a service to our members, the three area Model A clubs have decided to mutually share our classified ads sections! We are also now including items from our friends in the Central Iowa Model A Club (this will include Model A specific items only.) Ads will run approximately 3 months unless we are notified that the item is still available.

For Sale: 1929 deluxe Roadster; \$12,500

Contact: Don Waller 316-259-2605 (WAS 10/2014)

For Sale: Two (2) Brand-new in the package 21in metal stem tubes for sale. Nickel plated USA -\$65. Paid \$77 + shipping, got the wrong ones and waited too long to return them.

Contact: John Osborn (816) 436-0452

Wanted: I would like to purchase a 1929 Model A with a rumble seat that RUNS. I do not have the time or skill or know anyone to overhaul an engine. I need to sell a 1915 restored Model T. Please feel free to call me.

Contact: Barbara Craft, Cell 620-794-7333 (WAS 10/2014)

For Sale: 1931 S/W 4 door Blind Back Sedan. New gas tank and top. Runs good. \$15,000

Contact: Lynn Andrews 316-258-2730 (WAS 10/2014)

For Sale: 1931 Model A Coupe; only 2 owners. Current owner has owned since early 60's and did complete restoration. All major components are original. NO bondo. Hand rubbed lacquer still in good shape, no spider webbing. Always stored indoors with recent maintenance includes new battery, carburetor kit, window channels. Tires and interior in excellent condition. Only 79880 original miles total. Located in Salina KS; pictures and more info available at <http://salina.craigslist.org/cto/4661117542.html>.

Contact: Eric Smith 405-203-3195 or email eric.hdsupply@gmail.com (SWMMA 10/2014)

For Sale: 1931 S/W 4 door for sale. \$15,000

Contact: Jim Ballard 316-644-0119

For Sale - 1931 Roadster. New Battery, Brakes need adjustment. \$12,000.

Contact: Todd Lawson 515-707-0056 or talawson@q.com (CIMA 10/2014)

For Sale: 1929 Chevy 2-Door Sedan Disc Wheels-6 New tires mounted, Frame is rolling ready to go, Head is rebuilt, Block boiled out ridge removed and cylinders honed. Good straight body. Rod bearings (babbit) done

Contact: Bruce or Ginny 785 286-0329 or 785-286-0395 (NWMO 09/2014)

For Sale:- 1930 Coupe -\$9000. Complete extra motor (needs rebuilt) with generator and carb - make offer. Radiator, Radiator Shell, Front Hubs - make offer. 'AA' 4 speed transmission - make offer. Buy everything for \$10,000.

Contact: Lawrence Richards 515-991-7286. (CIMA 10/2014)

For Sale: Dan Wantland's 1929 Pickup \$12,000 or best offer

Contact: Terry Wantland 816-560-7596



For Sale: Model T-A and more parts for sale. Since my garage building is too full of cars and I have no more space to build more, I guess I am now quitting building cars. I now will share my parts -lots of parts!!

Grandpa's Garage

Contact: Dean Weller 913-585-3326 or 913-585-1313



Winter Tip

Submitted by Terry Richardson

Use cedar blocks to keep moths out of your Model A. These can be purchased at Wal Mart. Dryers sheets can also be used to keep mice out. Use 3 or 4 sheets. Also, Fresh Cab Rodent Repellant available at Menards comes in a box with 4 pouches and lasts 3 months. This is great for keeping mice out and doesn't smell bad. .

Help Needed Locating Photo Albums

Vicky is missing some of the past photo albums that document the history of our club. If anyone has them or knows of them, please bring them to Vicky so she can complete the club's historical information.

Fire Extinguisher Tip

Submitted by Terry Richardson

FireAde is a 16 oz fire extinguisher the size of a tall can of WD 40 which can be bought at O'Reillys. It can be stored easy in your Model A. , After seeing Gary's Smith Model A catch a fire at Tulsa I know this extinguisher will come in handy sometime.

Failure is simply the opportunity to begin again, this time more intelligently.

~ Henry Ford



Get Involved!

Don't forget—this club doesn't just run like this without a lot of behind the scene work. This is a picture of your 2014 Board at one of the recent Board meetings.

All of us have been hard at work all year to make sure that things run as smooth as possible and that great fun is available for everyone. It takes a little time and some hard work, but oh, it is so worth it!

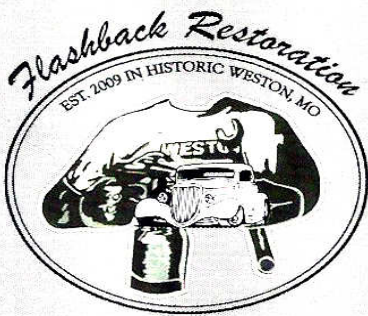
So if someone asks you to step up to help next year, remember—the best way to enjoy this club and get to know more people is to get involved!

AUTO COLOR & EQUIPMENT

524 E. 23rd Street
Independence, MO 64055

Phone: 816-254-5630
Fax: 816-254-5635

TOUCH UP
Aerosols - Bottles
Computerized Color Match Available
www.auto-color.com



SCOTT LOW
OWNER
17975 N 45 HWY
WESTON, MO 64098

816.807.6430

*Specializing in
Auto Restoration*

www.FlashbackRestoration.com

Twisted Metal!

Collision Repair and Restoration

Dustin Scott

816-284-1527

Tom Kautz
Owner

www.tomkautz.com

KAUTZ
Established 1916



*Electric
Auto Parts
Auto Glass*

Rebuilding Starters, Generators, and Alternators
6volt - 12 volt

920 Commercial St.
Atchison, KS 66002

Phone: (913) 367-1717

Affordable Machine Quilting

Where you can expect quality work in a timely manner

Rose M. Hamer
cell# 816-288-9662

110 E. 3rd Street
Cameron, MO 64429
rose_hamer@yahoo.com

Kate Harp's Daughter, the next generation of quilters

BRATTON'S

ANTIQUE AUTO PARTS



800-255-1929 Phone
www.brattons.com

800-774-1930 Fax
1606 Back Acre Circle
Mount Airy, MD 21771

Your source for Quality Model A Ford Parts since 1976

AMERICAN LEGION
USMC NAVY
ARMY USAF
COAST GUARD

Serving ALL Veterans and
the Community



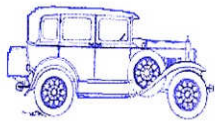
Remembering
Those Who Served

Smithville American Legion Post 58
P.O. Box 158
Smithville, Missouri 64089
(816) 532-3115

LOCATED AT:
Hwy 92 & County Road DD

Find us on Facebook at:

<http://www.facebook.com/SmithvilleAmericanLegionPost58>



"A" REPAIR SHOP

BOB HESS

12731 CHERRY STREET, KANSAS CITY 64145
816-941-4101 Cell: 816-668-3902

SERVICE - REPAIRS - UPGRADES AND COMPLETE RESTORATION
 OVER 20 YEARS EXPERIENCE - MAFCA CERTIFIED MASTER JUDGE



516 South 70th Street
 Kansas City, KS 66111

913-788-2628
crosslinkpowdercoating@hotmail.com



EAGLE AUTO STRIPPING

Blasting With Plastic, Glass & Sand
 Fiberglass, Aluminum, Steel, Any Surface
www.eagleautostripping.net

(913) 334-6331
 Fax (913) 334-6333

7300 Kaw Drive (K32)
 Kansas City, KS 66111
 "Best Strip Joint In Town"

Mark Freeman



BRASSWORKS Aries Mufflers

New and Used Antique Parts

MILT'S MODEL 'A' REPAIR, PARTS & SALES

F.S. Modern Ignitions . Mitchell Overdrives
 Overdrive & 4-Speed Transmissions Installed

806 W South Avenue
 Blue Springs, MO 64015
hesfrt@sbcglobal.net

Milton Hessefort
 816-229-1949
 Cell 816-590-4317

A - Z Model A Parts - Zanes

Ron and Sondra Kester, Owners

773 Central Street

Glade, Kansas 67639

Phone: 785-543-6729

Fax: 785-543-3013

e-mail: 2officegirls@ruraltel.net

DON'S SERVICE

BORING • MILLING • SLEEVING VALVE SEATS

DON LOBNER
441-4649

26412 W. 87TH STREET
LENEXA, KS 66227

"HAVE AN 'A' DAY"



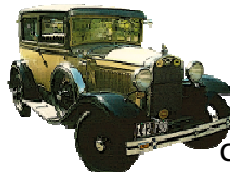
Michael Butcher

1-888-879-6453

email: mike@mikes-afordable.com
www.mikes-afordable.com



Specialising in 1928 - 1931 Model A Ford Parts



SHAW'S PAINTING

Carry in only. Body and paint work

\$20.00 an hour.

Can paint all top coats; usually use Dupont finishes

Jim Shaw

816-436-5538

Snyder's ANTIQUE AUTO PARTS

12925 Woodworth Rd. New Springfield, OH 44443

The World's Largest Selection of 1909-31 Ford Parts

FREE Fully Illustrated Catalog
 \$10.00 outside the U.S., Canada, & Mexico

**Servicing the Hobby
 For Over 50 Years!**

Toll Free Ordering (888) 262-5712 or FAX (888) 262-5713

For technical info (330) 549-5313 or FAX (330) 549-2211

Order On-Line @ www.snydersantiqueauto.com

Invitation To Join Model A Ford Club of America

New Membership

Name _____
 Spouse's Name _____
 Address _____
 City _____
 State _____ Zip _____
 Country _____ Telephone _____
 Permission to publish my telephone number in future Membership Rosters? Yes: ____ No: ____

Gift Membership

Name _____
 Spouse's Name _____
 Address _____
 City _____
 State _____ Zip _____
 Country _____ Telephone _____
 Permission to publish my telephone number in future Membership Rosters? Yes: ____ No: ____

~ Membership Benefits ~
The Restorer magazine • Technical Support • Local Chapters • National Meets • Era Fashion Guidelines • "How To Restore" Series • Judging Standards and Restoration Guidelines

Dues per year are
 U.S. Membership - \$40
 International Membership - \$50
 International First Class - \$56
 Make checks or money orders payable to
 MAFCA
 U.S. Funds Only

For Credit Card Orders ~

Visa / MasterCard (circle one)

Card Number: _____

Exp. Date: _____

Signature: _____

____ Membership Only ____ Membership + Initiation Package

Optional Initiation Package For New Members Only

1 - Back Issue of *The Restorer*
 1 - MAFCA Lapel Pin
 1 - MAFCA Decal
 1 - Name Badge
 Only \$10 extra



Return this form and payment to:

MAFCA

250 South Cypress Street • La Habra, CA 90631-5515

Source: MAFCA Web Site
 2008 Membership Form

MODEL "A" RESTORERS CLUB

6721 Merriman, Garden City, Michigan 48135

Membership Dues: Regular Mail: U.S. \$38;
 Air Mail: U.S./Canada \$50, International \$56 for the calendar year.
 Includes 6 issues of *Model "A" News* over a calendar year. U.S. funds only



Name (Print) _____

Spouse's Name _____

Address _____

City _____ State _____ ZIP _____

Phone Number _____

Is it ok to list phone number in club roster (yes or no)? _____

Signature _____

EMAIL address _____

Is it ok to list email address in club roster (yes or no)? _____

Circle one: Check | Visa | MasterCard | Discover Card

Card Number _____

EXP. Date _____ last 3 digit code on back of credit card: _____

THE ROAD RUNNER

% SHERRY WINKINHOFFER

14900 GREEN BRIAR DRIVE

SMITHVILLE MO 64089-8831