

The ROAD RUNNER

MAFCA "Certificate of Continuing Excellence" 2010, MARC Newsletter of the Year 2010

MAFCA Charter

MAFCA "Newsletter of the Year" 2009, MARC "Award of Excellence" 2011

MARC Region



Officers

President:	Malcolm McIntyre
Vice President:	John Kunkle
Secretary:	Sandi Shaw
Treasurer:	Bob Martin
Activities/Tours :	Cheryl Taylor & Sherri McIntyre
Technical	Ray Meyer
Concerns/Calling:	Karol Russell
Historian:	Vicky Roseberry
Membership/Public Relations:	Liz Blakley
Merchandising:	Mary Ann Jones
Newsletter/Publishing:	Sherry Winkinhofer
Property:	Nelson Young
Webmaster:	Dave Telles
Director:	Bob Russell
Director:	Walt Jones

Birthdays

Larry Weigum	04/07	Mickey Staron	04/16
Judy Delaney	04/10	Rhonda Forsen	04/22
Clifford Snow	04/17	Barbara Simon	04/30
Bob Dunham	04/19		

Anniversaries

Will & Mickey Staron	04/02
John & Janice Kunkle	04/25

Monthly Meeting

April 7th

6:00 dinner available at special price, 7:00 meeting
The American Legion, 92 Hwy & DD,
Smithville MO

April 17th

(The 3rd Thursday of the Month, 7 pm
The Mid-Continent Library
Boardwalk Shopping Center, Barry Road and I-29

Technical Meeting & Breakfast Club

Every Wednesday 6:00 -10:00 AM
HY-Vee, 207 NW Englewood, Kansas City MO

Ice Cream & Socializing

Every Saturday evening 6:00 PM
Big Burger, 4700 NE Vivian
Kansas City MO 64119



Presidents Comments:

The shake down cruise is coming up Saturday and the weather looks to be good so let the Model A touring season begin.

Please check the Road Runner, our calendar and website for upcoming tours and as always if you don't have a Model A or if its currently in the shop, grab your modern car and come join us.

Sherry and Bob have done a great job with the new membership directory and its been printed and available for distribution. I have passed out a few at the Wednesday breakfast and I will be bringing some to the April meeting to distribute to members and then we will mail those that we haven't connected with. Once everyone gets one, then we will make extras available for purchase (one additional) and then see what we have left for additional purchases if members want more.

I would like to thank everyone for making the Silent Auction another successful fund raiser for the club, and as always a fun event.



Malcolm McIntyre - President

*I try to take life one day at a time but sometime several days
attack me all at once!.*

Editor's Comments:

Tomorrow is the first tour of the season, the Shake Down tour! I'm excited and hoping the Old Lady will start, since her battery was dead when I tried to start her. I put the trickle charger on her and I'm keeping my fingers crossed! If you see me at the Shake Down tour in her, you'll know I was lucky!

It's been a long winter, but I've kept busy working with Model A stuff to fill the time (at least when I've been in town!). This newsletter keeps me busy and I'm still Editor of the A World, MAFCA's free newsletter for children which publishes quarterly. If you don't have any kids in your family signed up for it, you should! Did I mention its free?

I've been buying and reading plenty of old vintage magazines from 28-31 to find new items to use in both of these publications. (Thanks Ebay!) I love the history behind the cars, and I learn so much from reading these magazines. I can just get lost for hours sometimes!

I'm getting excited about the upcoming activities at my place on April 26th, and doing lots of planning. I hope everyone is planning on attending, it's time that Wink's Barn is used again for the purpose it was intended for: Model A's! And we ladies should have plenty of fun in the house playing tea party too! Come join us!!

Happy "A"ing



Sherry Wink, Editor



Activities & Regional Events

"Departure places and times for events will be published on the Web Site and Newsletter the month prior to the event".

April 3-6-MARC National Membership Meet

St. Louis MO

For updates: www.modelclub.org

For more info: Jeff Buckley Puxico002@hotmail.com

April 5th—New Theatre Restaurant

Cancelled

April 26th—Ladies Luncheon/Tea

Men's Garage Day

Wink's Barn, 14900 Green Briar Drive, Smithville

Luncheon for Ladies / Seminar for the Men

May 17th—Armed Forces Day Car Show

Cameron's Veterans Home

Departs from American Legion Hall, Smithville at 9:00 AM

to arrive in Cameron by 10:00

Lunch afterwards at McCorkles in Cameron

May 24th—Atchison Air Show

Leave from Platte City McDonalds

8:30 AM to meet other clubs at the Atchison Train Station by 9:30

Lunch after in Atchison

May 24th—Running with Bonnie and Clyde The Red Crown Symposium and Road Tour

At Zona Rosa—Details to follow

May 31st-Annual Club Picnic

Details being finalized

June 9-12-Tulsa Model A Territory Regional

Tulsa OK

Visit tulsamodelafordclub.com to register

or contact Ken and Tory Brust at 918 728-2015 for info.

If you are planning on joining in on any of the tours or activities, but haven't put your name on a sign-up sheet, let Cheryl or Sherri know!
Phone: 816-456-4978 or Email: techguy@nwmomodela.com That way if it has to be canceled or has a location or the schedule changed, you will be notified!

Next meeting: Social Time!

One of the biggest complaints we hear about our meetings is that there is never enough time to visit with all our friends. So this meeting, instead of a formal presentation, we are setting aside the extra time to spend getting to know your fellow members better!

This will be a great time to look around the room and make a bee line to that person that just joined recently that you haven't had time to get to know. Or to that member that you see at many of the meeting but haven't connected with yet.

So get your visiting clothes on and get ready to socialize with the best of 'em. See you there!!



Sunshine/Concerns



Karol Russell is our Sunshine/Concerns lady! If you know anybody in need of a card or phone call, please let her know.

And, if you just want to share the news of a happy event, such as a new grandbaby or a wedding, let her know that too!

Call 816-628-3929

Spring Ladies Luncheon & Tea Men's Seminar and lunch



April 26th come join us for fun and Model A's at 14900 Green Briar Drive starting 1:00 PM.

For the ladies there will be a delightful luncheon and tea with plenty of dainty sweet and savory goodies to check out. I'm still working on coming up with a short presentation to fill out the afternoon, or we'll just visit or gossip, or even a little both!

For the guys, we'll spare them the need to hold their little finger out while juggling the tea cup and provide them with hot dogs and chips while they attend a "garage nite" seminar in Wink's Barn guest hosted by Marvin Taylor.

It's bound to be fun, hope to see you all there!

Deadline for the Next Road Runner The 20th of the preceding month

Email to roadrunner@nwmomodela.com

Or mail to: Sherry Winkinhofer
14900 Green Briar Dr
Smithville Mo. 64089



Club Contact Information:

President Malcolm McIntyre

info@nwmomodela.com

All Officers: info@nwmomodela.com

Tours and Activities: tours@nwmomodela.com

Publications: RoadRunner@nwmomodela.com

Membership: Webmaster:

webguy@nwmomodela.com

Tech Advisor: techguy@nwmomodela.com

Visit **www.nwmomodela.com today!**

The club website is maintained by
Webmaster Dave Telles
Please email any info, pictures, questions &
suggestions to **info@nwmomodela.com**



Northwest Missouri Model A Ford Club Meeting

March 3rd 2014 American Legion Hall Smithville MO 7:00 P.M.

The meeting began with the pledge of allegiance led by Vice President, John Kunkle.

Secretary's Report: There was one correction to the minutes of the February meeting. Minutes were approved after secretary read correction.

Treasurer's Report: Approved as read.

President: Malcolm said the club budget for 2014 will be in the next Road Runner. He forgot to bring the printed budgets to the meeting to distribute.

Vice President: John reminded us there will be great bargains at the silent auction tonight and the money is for a good cause, our club.

Membership: 72 people present tonight. Liz said the new roster will be printed in the next month or two. Anyone with information changes from the old roster needs to contact Liz so it will be correct in the new roster if you have not so.

Concerns/Calling: Thinking of you card sent to Tim Osborn. Congratulations card to new grandparents, Jr. and Liz Blakely.

Activities: March 19 – Ladies Luncheon at Kate's Kitchen, March 29 – Shake Down Cruise, Lunch at Wabash BBQ in Excelsior Springs, Mo., April 26 – Ladies Tea and Men's Garage Day at Winkinhofer barn.

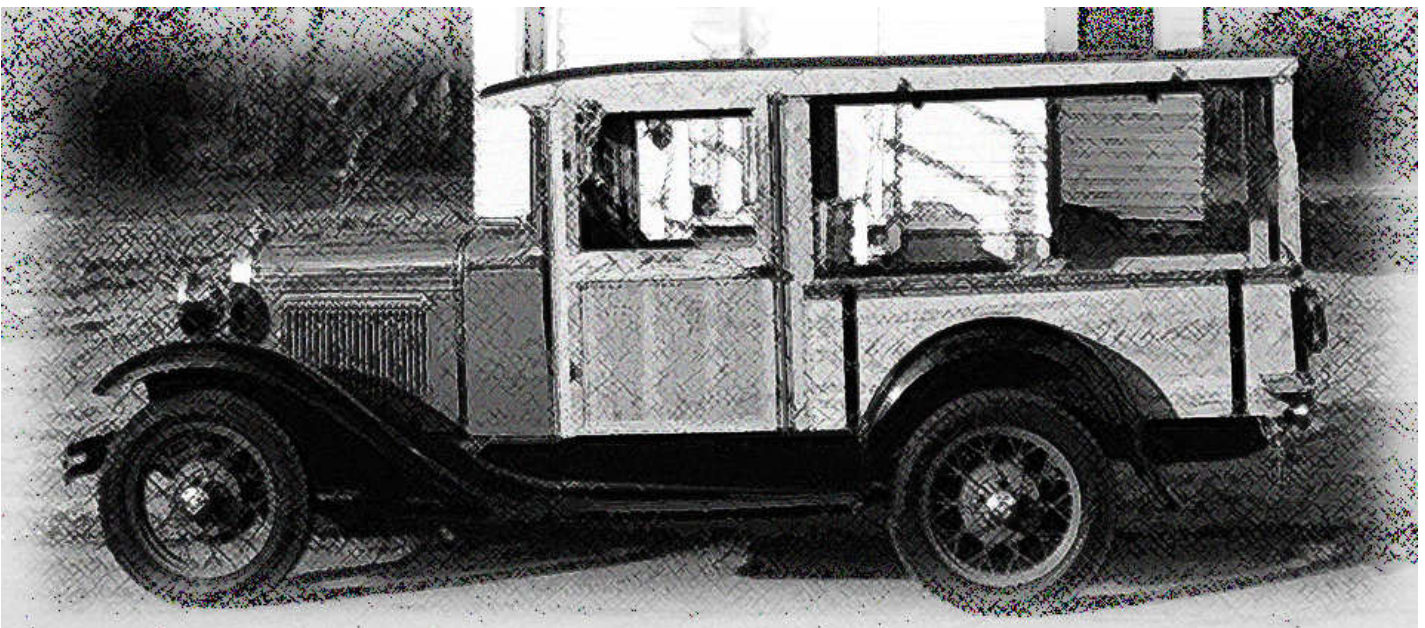
Technical: Ray thanked Lonnie Hanks and John Osborn for the great garage day they put on. Malcolm was the first to reply to the technical question of what the fly wheel weight is. It is 63 lbs.

Merchandising: Mary Ann has cups plus other items for sale. She will be the raffle chairman for the 2015 Regional and asked we be thinking of items we can donate for the raffle. Do not bring them to her until she asks for them .

Regional 2015 Chairman: 20 cars have signed up to go to the Tulsa regional in June. The group traveling together will leave on Saturday June 7th so there will be time to drive and see the sights on Route 66.

Business Meeting adjourned at 7:30 so we could begin the silent auction which was the program for tonight.

Respectfully submitted by Sandi Shaw.



March 3rd Meeting

This was one of those rare meetings when we rushed through the business section of meeting. You could tell everyone was anxious to get to the fun stuff. It was our annual silent auction fund raisers, and boy did we have stuff! To paraphrase a Disney tunes—"We had gadgets and gizmos a-plenty, we had whozits and whatzits galore, you wanted thingamabobs, we had plenty!" And boy did we too!

Plenty of baked goods and yummy desserts, books, shirts, hats, dresses, tools, you name it, it was there! And, oh yes, plenty of Model A stuff too! Even during the meal before the meeting, the tables were already garnering bids. As each new item came in in the door, it gathered a small crowd eager to check it out!

Thanks to the generous nature of our members, tables full of items that were donated for the good of the club were quickly snapped up dollar by dollar bid. At the end of the evening, when Auctionmeister Bill Auch called time, items were quickly snatched up by the triumphed bidder and the line formed to the left of the table where Treasure Bob Martin was happily collecting the money with the help of a few other members to keep the line moving.

By the end of the evening, the grand total was counted and recounted, with the final count showing we raised \$1295.00 dollars!! A Big "Thank You" to all the members for their generous contributions of items for the auction. And a second big "Thank You" to all for opening their purses and wallets to buy these items for the benefit of the club! What a great way to spend a fun evening and at the same time help finance the year's club activities.

\$1295
Grand Total
Raised
by the
Silent Auction



Running with Bonnie and Clyde: The Red Crown Symposium & Road Tour

The Improv Comedy Club, Zona Rosa, 7430
NW 87th Street, Kansas City, MO

As part of Platte County's 175th Anniversary, this event examines the Barrow Gang, the events leading up to the Red Crown affair and its aftermath. Through film, rare slides and oral accounts, this historical event will be retold. Following the symposium, the 1930's Era Faahion Show will display great fashions of yesteryear. A VIP panel will judge the competition. Prizes will be awarded.

Then the "Escape from Platte County Road Tour" will retrace some of the actual roads used by the Barrow gang that night. Today those same roads are newly paved country back roads - perfect for a vintage car tour.

If you're a history buff, a vintage car fan or both, you're sure to enjoy this unique program. Although admission is free, advance registration is required. Event is limited to the first 300 persons registered.

For additional registration forms copy these or visit
http://attacheinternational.com/Attache_International/Red_Crown_Symposium_and_Road_Tour.html

For more information contact:
Jim Spawn
Office: 816-421-1991
Cell: 816-916-4100
Email: Jspawn321@aol.com



John Osborn shared another great tip!

If you've read something interesting or fun recently, please consider sharing it too!

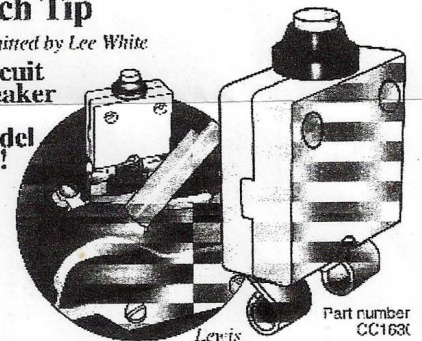
Reprinted from The Ohio Valley Region's News "The
AAAAOOOGAH!"

PRICE \$12.58

Tech Tip

Submitted by Lee White

**Circuit
Breaker
for
Model
A's!**



Many of us use a fuse mount assembly attached our starter assembly to protect our Model A's. Replace the 30 amp fuse with this 30 amp circuit break available from your local Peterbilt truck dealer. It sna into the fuse holder with no modifications. Part number CC1630. Approximate cost is \$13.00 per unit.



Cline's Opry February 23rd

Sherry Wink
Photos from Harvey and Vicky Roseberry

Looks like it was a great turnout for this winter visit to the Opry in Weston. Looks like our club practically took over all the seats! The music was great as always, and it was a great way to get together with friends when it was too cold to drive our cars!



Here's an excerpt from the MAFCA Fashion Committee. And yes, all these garments are advertised as "pajamas". For the complete article, including details about the pictures, visit MAFCA.com and click on Era Fashions and Article. There are also many other interesting articles to be found there!

PAJAMAS

By Lois Przywitowski

"Because they have grace and chic --- because they are equally practical and comfortable -- pajamas are the outstanding and best-beloved of all fashions. The little girl, the dignified hostess and her youthful guests . . . all attire themselves smartly for almost every occasion in these smart new designs." Pictorial Review, June 1931

Pajamas have a long history in clothing. According to Wikipedia the original pajama was worn by both sexes in South and West Asia. It was known as pajama, a "loose, lightweight trouser fitted with drawstring waistband." The word pyjama or pajama derives from the Persian word payjameh.

The British adopted the pajama during the period of their expansion, adding a top and jacket. By the Model A era, the pajama was worn for beach wear, sporting activities, entertaining at home, and dancing, as well as sleeping and lounging.

The following images show the many styles and uses of the pajama.



Here's a Soda bread recipe from someone's old family cookbook. I found this at underthebigpine.com and it looks tasty! Willie Fears was a trapper and backwoodsman who cooked this at his camps.

Uncle Willie Fears' Soda Bread Recipe (1928)

2 cups flour 1 teaspoon baking soda
½ teaspoon salt 1 cup cold buttermilk

Directions

Preheat Dutch Oven. Smear loaf pan with butter. Mix together all ingredients and form a soft dough. Add a little more buttermilk if needed. Pour dough into buttered pan. Place in Dutch oven and bake until golden brown.

Serve with sour wood honey on it.

Note—if you don't want to use a Dutch oven, comments indicated that it also worked fine cooking it in a cast iron skillet in a conventional oven at 375 degrees for 20 minutes.

Brands We Still Know!

American Standard began in 1892 as the American Radiator Company. In 1899 multiple other companies consolidated to become the Standard Manufacturing Company. This included the firm Ahrens and Ott, which manufactured cast iron enameled sanitary ware, including sinks, toilets and tubs. In 1929, the American Radiator Company merged with the Standard Sanitary Manufacturing Company to form the American Radiator and Standard Sanitary Corporation. In 1967, the company changed its name to American Standard Corporation.

Note of interest: In 1829, the Tremont Hotel of Boston became the first hotel to have indoor plumbing. In 1834 John Aster's mansion was the first private home known to have built with indoor plumbing.



An ad from the April 1931 House Beautiful magazine

Model A Quiz

This year we're starting a new game, with questions based on Model A technical information!

Question: What is the Oil Pump pressure range in pounds

For "Bragging Rights", put your answer on a postcard and send it to:

Ray Meyer, 710 NW Rosaceae Drive
Blue Springs MO 64015

or email Ray at techguy@nwmoModelA.com

January Quiz Question

Question: 1928 what is the weight of the flywheel

Answer: 63 lbs

Did you know? Malcolm was the quickest with the correct answer!

New Cowl Tank—Ford Service Bulletin May 1931

A new design cowl tank A-9002-E is now being used in all Model "A" cars and "AA" trucks. The new tank replaces the previous design A-9002-C tank which will be obsoleted after present stocks are exhausted. With the installation of the new tank, the gasoline pipe has been redesigned as the sediment bulb has been removed front the front of the dash and is replaced by a new filter bowl which is attached to the carburetor.

Replacements If after present stocks are exhausted you receive a call for an A-9002-C tank, supply the new A-9002-E cowl tank. To replace an A-9002-C tank with the new design proceed as follows: Remove old A-9002-C cowl tank. Drill 1 3/4" diameter hole, 10 9/16" from center line of car and above center line of hole for old sediment bulb (see Fig. 1163) and assemble rubber grommet A-9072 into hole in dash.

Position the new A-9002-E tank in place. This tank has an outlet flange riveted to it which will line up exactly with the hole in the dash. To provide an extension (for service purposes only) an adapter A-9074-R is screwed into this outlet flange. A new valve assembly A-9189-B is then screwed into the adapter. (See Fig. 1162.)

Next place two A-22333 washers over the threaded end of the new filter bowl and assemble filter bowl to carburetor. The two washers will come between the carburetor and the filter bowl and provide sufficient clearance between these parts. The filter bowl is assembled to the carburetor by screwing it into the hole in the carburetor where the gasoline pipe was formerly attached.

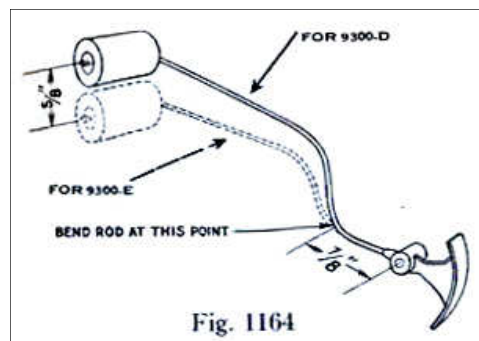
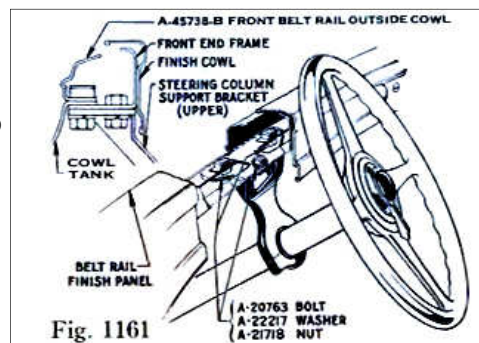
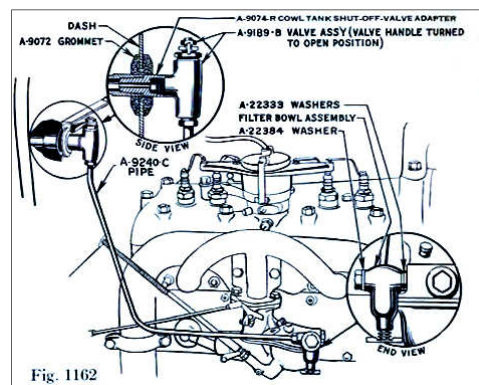
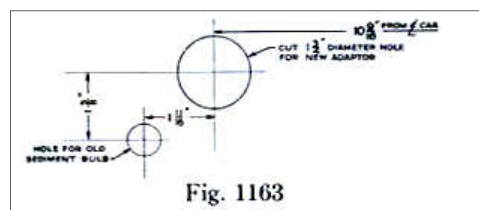
Connect the new gasoline pipe assembly A-9240-C to filter bowl and gasoline valve.

Assemble new steering column bracket A-3523-F to body front end frame. On models 180-A, 190-A, 295-A and 330-A use bracket A-3523-G. It will be found that two of the holes in the bracket are exactly in line with two of the bolts used for fastening upper part of old cowl tank to front end frame. Remove the nuts from these bolts, insert the bracket over the ends of the bolts and replace the nuts. On closed cars the remaining bracket hole which must be 11/32" diameter can be drilled in the belt rail flange using the center hole in the steering gear bracket as a guide when drilling (see Fig. 1161). This applies to closed bodies only. On open bodies the use of two bolts will be sufficient to hold the steering column bracket to the front end frame.

All of the gasoline gauge parts used with the A-9002-C tanks can be used with the new A-9002-E tanks. It will, however, be necessary to bend the float rod on the gas gauge 5/8" downward (see Fig. 1164) in order to make it register properly when used with the new tank.

The old gas gauge assembly A-9300-D and the A-9312-C gas gauge dial, float and rod assembly have been obsoleted and are replaced with A-9300-E and A-9312-D respectively. If calls are received for these old float and rod assemblies, supply the new parts and bend the new float rod upward to correspond with the angle of the old rod. (See Fig. 1164.)

The old design tanks A-9002-A used on 1928-9 cars and the A-9002-B tank used on the early 1930 cars will be retained for service, as to install the new cowl tank in one of these old cars would involve the replacement of the instrument panel, speedometer, speedometer cable, ignition lock, etc., and this of course would involve considerable labor and expense. -•



An interesting article posted in the Ford Model "A" Album Compiled by Floyd Clymer & Leslie R. Henry, from the Ford Dealer and Service Field" for February 1931

Mechanics, Can You Answer These Questions

BY THOMAS HOWE

This Is the Thirty-seventh of a Series of Practical Questions and Answers, Forming a Home-Study Course for Mechanics on Model A Ford.

QUESTIONS ON FORD WHEELS

1. What are some of the advantages of the Ford wheel?
2. Why is the Ford type of wheel not used on other makes of cars?
3. What is the diameter of the spokes of a Ford wheel? What is the tensile strength of each spoke?
4. How many spokes are there in a Ford wheel? What would happen if several spokes were damaged?
5. Can Ford wheels be repaired? If so, how?
6. What care should be used in mounting Ford wheels on the hubs? Why?
7. What care should be used in mounting tires on the rims? Why?
8. What are the advantages of the drop-center rims?
9. Why are Ford wheels comparatively easy to clean?
10. How are the Ford spokes arranged in triangles? What are the advantages of this design?
11. Why is the Ford wheel better than the conventional wire wheel ?
12. Why is the Ford wheel better than a wood wheel?
13. Why is the Ford wheel better than a disc wheel?
14. What are the advantages of the method of attaching the Ford wheel to the hub ?
15. What is the correct air pressure to use in Ford tires?

Answers to the above questions:

1. Among the advantages of the Ford wheel are: great strength and safety; it combines the advantages of wire and wood wheels, yet is radically different in design and construction from any other wheel now made; it is light in weight, making the car easier to start and stop, and reducing the unsprung weight; it is neat and attractive in appearance, and is easy to clean.

2. Because Ford wheels are patented (Patent No. 1,467,478), the Ford type of wheel is controlled by the Ford Motor Company. However, these wheels are used on the Lincoln car, because nothing better is known, regardless of cost.

3. The spokes of the Ford wheel are of 1/4-inch diameter. Each spoke has a tensile strength of 4,000 pounds.

4. There are 30 spokes in each Ford wheel. Ford wheels can be used even though several spokes are damaged. In fact, as a stunt, one Ford dealer cut away half of the spokes of a Ford wheel and found the wheel still amply strong for all ordinary driving.

5. In case Ford wheels become permanently bent in an accident, the bent spokes are sheared out and new spokes welded in, making the wheel as good as new. If spokes are only slightly bent, they can often be straightened in the wheel, using special tongs made for this purpose.

6. When mounting Ford wheels on the hubs, the five bolts should be tightened in a zig-zag manner, alternating as equally as possible from one side of the wheel to

the other. The five nuts should be tightened evenly and securely. There is no need to attempt to strip the threads. Unequal tightening of the nuts may tend to cause sprung brake drums.

7. In mounting tires on the rims, the "red dot" should be placed adjacent to the tire valve. The red dot marks the lightest side of the tire, and when placed adjacent to the valve, the weight of the valve stem is equalized and the wheel is balanced, thus tending to reduce vibration and wobble. The "red line" around the tire shows when the bead of the tire is seated evenly all the way around the rim.

8. Among the advantages of the Ford drop-center rim are: ease of tire changing, and no tools necessary; makes wheel stronger by adding the rigidity of channel steel; no loose parts to become bent or lost; more air space in tire, giving easier riding with same size tire.

9. Ford wheels are easier to clean because of fewer spokes as compared with conventional wire wheels, because no spokes are crossed, and because the enamel finish makes it unnecessary to dry wheels after washing.

10. The Ford spokes form a series of triangles, parallel to the rim with spokes forming two sides of the triangle and the rim forming the base. The spokes also form another series of triangles, parallel to the axles, with the spokes forming two sides of the triangle and the hub forming the base of the triangle. The triangle is a scientific form of engineering design, giving great strength and rigidity with light weight.

11. The essential difference between the Ford steel spoke wheel and the conventional wire wheel is that the Ford spokes are electrically welded to both rim and hub, thus forming an integral or one-piece construction giving great strength and rigidity. Ordinary wire wheel spokes support the axle from the rim only in tension. Ford spokes support the axle in both tension and compression.

12. The Ford one-piece steel spoke wheel is much better than a wood wheel in that it has far greater strength, especially against side-swiping, due to the bracing effect of the strong steel spokes placed at an angle. Other obvious advantages are that it is lighter, has drop-center rim, has less rim weight, and is not affected by climatic changes. The Ford wheel supports the axle in both tension and compression, as compared with wood spokes, which support the axle only in compression.

13. The Ford steel spoke is lighter and stronger than a disc wheel and allows the use of the drop-center rim. Also, it does not act as a sounding board to amplify rear-axle gear noises, and so is quieter and better adapted to passenger car use.

14. The wheel is carried on the -T tapered section of the nuts, rather than on the studs. Consequently, long use and wear do not result in looseness of the mounting. This feature also eliminates the danger of binding or sticking.

15. The minimum air pressure in tires on the Model A Ford should be 35 pounds; but if the car is driven fast, 40 pounds pressure is better.



For Sale / Wanted

As a service to our members, the three area Model A clubs have decided to mutually share our classified ads sections! We are also now including items from our friends in the Central Iowa Model A Club (this will include Model A specific items only.) Ads will run approximately 3 months unless we are notified that the item is still available.

For Sale: Cargo Trailer, Cargomate, 20 ft car tie down.
Enclosed trailer, \$2500

Contact: Chili Candia (816) 415-4948 or
Chili.Candia@gmail.com (04/2014 NWMO)

For Sale: Model A & Model B Engine Parts for sale.

Contact: Don Lobner (913) 441-4649 (04/2014 NWMO)

For Sale: '30-'31 Coupe Seat, '28-'29 Head-light Bar, '30-'31 Rear Bumper with brackets.

Wanted: '30-'31 Rear Fenders, Running Boards and Splash Aprons.

Contact: Joe Nerly @ (515) 276-6846. (02/2014 CIMA)

For Sale: 1930 Model A Tudor, very clean driver. Last summer I started some work on it but encountered medical problems before finishing so there is a little work that needs to be done. I think it's worth \$7000 the way it sits.

Contact Mark McCracken at 913-649-0740 for more info or to come see the car.(04/2014 POA)

For Sale: 1930 Factory Deluxe Coupe. Factory installed roll up/down rear window, rumble seat, B engine with 1244 miles since refreshed engine to include: .030 oversized bore, AER inserted rod bearings, Babbitt mains shimmed to .0015-.002. Compression check at 75,75,71,78 117 miles ago. 2 LED brake and tail lights, stone guard, and new horn. I have extra set of 4 vacuum sealed firestone WW tires at *)% new included. Absolutely no issues with this straight and nice touring Car.

Contact: Steve Hanna (712) 790-0073 (03/2014 CIMA)

For Sale: Two (2) Brand-new in the package 21in metal stem tubes for sale. Nickel plated USA -\$65. Paid \$77 + shipping, got the wrong ones and waited too long to return them. A great bargain for someone!

Contact: John Osborn (816) 436-0452

For Sale: 1931 Slant Windshield Fordor. Re-stored in the late '80s. Driven only 35 miles since the restoration. \$20,000.

Contact: McKenna @ (515) 341-3755 (02/2014 CIMA)

For Sale: 1931 Model A Tudor black w/w/ wall tires & light yellow rims, safety belts, big turn signals, stabilizer, GREAT running condition, excellent brakes, CLEAN & POLISHED, etc. READY TO GO !!! 14,000.00

Contact: 515-278-1234 leave message with your Phone Number.

(02/2014 CIMA)

For Sale: 2 - transmissions with bell housing - \$250 each, 2 - flywheel covers - \$30 each, 2 - Extendable running/luggage board racks - \$60 each, 1 - Starter - \$75, 1 - generator - \$200, 3 - 28/29 wheel rims / spoke wire wheels 21" - \$75 each, 2 - engine heads - make offer, Several water inlets and outlets - make offer, \$1000 for everything

Contact: Tom @ (319) 440-6433. (02/2014 CIMA)

Wanted: Mechanic to do minor repairs on 2 Model A's that were inherited. Both recently were driven and had the carbs start leaking fuel. Not sure if they need rebuilt or adjusted. 1928 also needs parking brake adjusted and horn recently quit working. 1931 has carb issue and sounds like it may have a "miss" in the engine. Both are in Olathe.

Contact: Jeremy Peterson 913-206-2984 or
Jeannie Peterson 913-908-5477 (04/2014 POA)



Your Ad could be here!

Wed's Technical Meeting & Breakfast*

Ray Meyer, Tech Director



Tom Williams brought in some old wiring for the group to look at, especially John. The wiring came from an old house. It looked like modern house wiring but the casing

was made from lead. Quite unusual.

Lonie Hanks discussed that he now has his brakes completed and is in the process of breaking them in before the break down tour.

John Osborn brought over new member Laura Cook's car on his trailer. A group of the guys have been working on it for her to help with engine and transmission problems she had encountered during her efforts to get it road worthy

Jim Spawn in an original menu from the Red Crown, one the many pieces of memorabilia that will be on display at the upcoming Bonnie and Clyde Event in May.

The Wednesday morning technical meetings are held each Wednesday in the dining area of the HyVee food store on North Oak at 54th street in Gladstone starting at about 6:00 a.m. and lasting until 9:00 a.m. or so. Hope to see you there!

Thanks to Malcolm for sending me updates!

Ladies Luncheon

The Ladies Luncheon will be April 16th at, 11:30.
Location will be at Cascone's 3737 N Oak
Trafficway, KC MO 64116 .
Please come join us!

New Members!!

Laura Cook
Daughter: Kathi Crawford
Cameron MO 64429

Kale & Carolyn Payne
Independence MO 64055-6781

Laurin Schutter
Parkville MO 64152-5303

Clifford & Lorene Snow
Kansas City MO 64153

Be sure to tell them "HI" at the next meeting!



Tom Kautz
Owner

www.tomkautz.com

KAUTZ
Established 1916



Electric
Auto Parts
Auto Glass

Rebuilding Starters, Generators, and Alternators
6volt - 12 volt

920 Commercial St.
Atchison, KS 66002

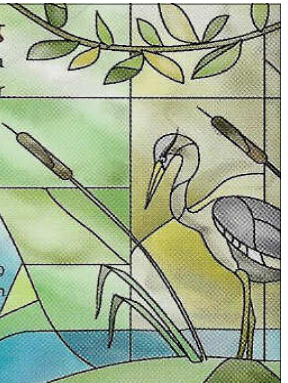
Phone: (913) 367-1717

Affordable Machine Quilting
Where you can expect quality work in a
timely manner

Rose M. Hamer
cell# 816-288-9662

110 E. 3rd Street
Cameron, MO 64429
rose_hamer@yahoo.com

Kate Harp's Daughter, the next generation
of quilters



BRATTON'S
ANTIQUE AUTO PARTS



800-255-1929 Phone
www.brattons.com

800-774-1930 Fax
1606 Back Acre Circle
Mount Airy, MD 21771

Your source for Quality Model A Ford Parts since 1976

AMERICAN LEGION
USMC NAVY
ARMY USAF
COAST GUARD

Serving ALL Veterans and
the Community



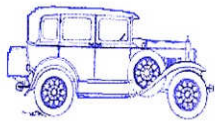
Remembering
Those Who Served

Smithville American Legion Post 58
P.O. Box 158
Smithville, Missouri 64089
(816) 532-8115

LOCATED AT:
Hwy 92 & County Road DD

Find us on Facebook at:

<https://www.facebook.com/SmithvilleAmericanLegionPost58>



"A" REPAIR SHOP

BOB HESS

12731 CHERRY STREET, KANSAS CITY 64145
816-941-4101 Cell: 816-668-3902

SERVICE - REPAIRS - UPGRADES AND COMPLETE RESTORATION
 OVER 20 YEARS EXPERIENCE - MAFCA CERTIFIED MASTER JUDGE



516 South 70th Street
 Kansas City, KS 66111

913-788-2628
crosslinkpowdercoating@hotmail.com



EAGLE AUTO STRIPPING

Blasting With Plastic, Glass & Sand
 Fiberglass, Aluminum, Steel, Any Surface
www.eagleautostripping.net

(913) 334-6331
 Fax (913) 334-6333

7300 Kaw Drive (K32)
 Kansas City, KS 66111
 "Best Strip Joint In Town"

Mark Freeman



BRASSWORKS Aries Mufflers

New and Used Antique Parts

MILT'S MODEL 'A' REPAIR, PARTS & SALES

F.S. Modern Ignitions . Mitchell Overdrives
 Overdrive & 4-Speed Transmissions Installed

806 W South Avenue
 Blue Springs, MO 64015
hesfrt@sbcglobal.net

Milton Hessefort
 816-229-1949
 Cell 816-590-4317

A - Z Model A Parts - Zanes

Ron and Sondra Kester, Owners

773 Central Street

Glade, Kansas 67639

Phone: 785-543-6729

Fax: 785-543-3013

e-mail: 2officegirls@ruraltel.net

DON'S SERVICE

BORING • MILLING • SLEEVING VALVE SEATS

DON LOBNER
441-4649

26412 W. 87TH STREET
LENEXA, KS 66227

"HAVE AN 'A' DAY"



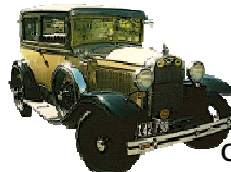
Michael Butcher

1-888-879-6453

email: mike@mikes-afordable.com
www.mikes-afordable.com



Specialising in 1928 - 1931 Model A Ford Parts



SHAW'S PAINTING

Carry in only. Body and paint work

\$20.00 an hour.

Can paint all top coats; usually use Dupont finishes

Jim Shaw

816-436-5538

Snyder's ANTIQUE AUTO PARTS

12925 Woodworth Rd. New Springfield, OH 44443

The World's Largest Selection of 1909-31 Ford Parts

FREE Fully Illustrated Catalog
 \$10.00 outside the U.S., Canada, & Mexico

**Servicing the Hobby
 For Over 50 Years!**

Toll Free Ordering (888) 262-5712 or FAX (888) 262-5713
 For technical info (330) 549-5313 or FAX (330) 549-2211
 Order On-Line @ www.snydersantiqueauto.com

Invitation To Join Model A Ford Club of America

New Membership

Name _____
 Spouse's Name _____
 Address _____
 City _____
 State _____ Zip _____
 Country _____ Telephone _____
 Permission to publish my telephone number in future Membership Rosters? Yes: ____ No: ____

Gift Membership

Name _____
 Spouse's Name _____
 Address _____
 City _____
 State _____ Zip _____
 Country _____ Telephone _____
 Permission to publish my telephone number in future Membership Rosters? Yes: ____ No: ____

~ Membership Benefits ~
The Restorer magazine • Technical Support • Local Chapters • National Meets • Era Fashion Guidelines •
 "How To Restore" Series • Judging Standards and Restoration Guidelines

Dues per year are
 U.S. Membership - \$40
 International Membership - \$50
 International First Class - \$56
 Make checks or money orders payable to
 MAFCA
 U.S. Funds Only

For Credit Card Orders ~

Visa / MasterCard (circle one)

Card Number: _____

Exp. Date: _____

Signature: _____

____ Membership Only ____ Membership + Initiation Package

Optional Initiation Package For New Members Only

1 - Back Issue of *The Restorer*

1 - MAFCA Lapel Pin

1 - MAFCA Decal

1 - Name Badge

Only \$10 extra



Return this form and payment to:

MAFCA

250 South Cypress Street • La Habra, CA 90631-5515

Source: MAFCA Web Site
 2008 Membership Form

MODEL "A" RESTORERS CLUB

6721 Merriman, Garden City, Michigan 48135

Membership Dues: Regular Mail: U.S. \$38;
 Air Mail: U.S./Canada \$50, International \$56 for the calendar year.
 Includes 6 issues of *Model "A" News* over a calendar year. U.S. funds only



Name (Print) _____

Spouse's Name _____

Address _____

City _____ State _____ ZIP _____

Phone Number _____

Is it ok to list phone number in club roster (yes or no)? _____

Signature _____

EMAIL address _____

Is it ok to list email address in club roster (yes or no)? _____

Circle one: Check | Visa | MasterCard | Discover Card

Card Number _____

EXP. Date _____ last 3 digit code on back of credit card: _____

THE ROAD RUNNER

% SHERRY WINKINHOFFER

14900 GREEN BRIAR DRIVE

SMITHVILLE MO 64089-8831