

THE ROAD RUNNER

MAFCA charter MARC region

NORTH WEST
MISSOURI
MODEL 'A'
FORD CLUB



OFFICERS

PRESIDENT;	John Osborn
VICE PRES;	Lyman Ridgeway
SECRETARY;	Barbara Anderson
TREASURER;	Joy Osborn
ACTIVITIES;	Terry Richardson Tim Osborn
PUBLICATIONS;	Bill Auch
CONCERNS;	Dorothy Wantland
HISTORIAN;	Marcia Auch

NEW MEMBERS

Jim & Sandi Shaw, 1312 NE 85th Terr.K.C. Mo
64024. 816 436 5538.

Dennis Hartman 112 Southview Dr. Excelsior
Springs, Mo. 64024. 816 630 1188,
excelmwbcepsi.net .

Please add these to your roster

CLUB ACTIVITIES

May 4-5th. Lawrence swap Meet, still need some
volanteers to work, please let John know if you
can help.

June 4th. Regular meeting Lowman's 7:00pm.

June 11-15th. Wichita regional meet, still time to
register, several are driving but you can attend if
you go modern.

June 14-17th. Lathrop Antique Car, Tractor and
Engine show.

June 21st. Board Meeting 7:00pm at the
Boardwalk Branch Library.

July 2nd. Monthly meeting at Lowman's 7:00pm.

BIRTHDAYS & ANNIVERSARY S

May 5	Ron Anderson
May 11	Carole Miller
May 13	Mary Ractor
May 15	Larry Singleton
May 16	Harvey Roseberry
May 19	Milton Hesselord
May 21	Peggy Richardson

May 1	Sandi & Jim Shaw
May 8	Eta & Lyman Ridgeway

DATE TO REMEMBER

December 15th. Clubs first Christmas Party. to
be held at the 36 street cafe St Joseph. Mark it
on your Calendar.

CORRECTIONS TO OUR ROSTER.

John Osborn Address: 802 NE 73rd Terr.
Gary Minor Phone: 913 894 5223
Winkhofer Cell wink@huges.net

An overweight model "A" owner went on a
diet, he was not doing too good because on
his way to work he passed a Donut Shop, so
he picked out an alternate route, things were
looking up until the morning the alternate
route was closed. As he was going down the
old route he said, "LORD if I am to stop you
will provide a parking spot right by the front
door". When he got to the office he had
donuts for all, he said he had to circle the
block four times before the LORD got his
parking spot.

We had a good turn out Saturday the 28th to
gather the parts we took to Lawrence, had a
good variety. If we sell it all at the price we
marked them at it will be super. IF IF IF
NEXT REG. MEETING MAY 7TH

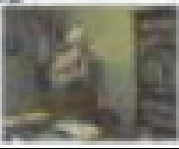
ROAD RUNNER



The Northwest Missouri Model A club enjoyed it's first special event on Saturday, March 31st 2007 by touring the countryside south of Smithville lake to Shoal creek and back to Smithville. Nine model "A"'s and two modern with 23 members and two guests took to the road at 10:00am from Lowman's cafe in Smithville and enjoyed the green, graceful countryside of Clay County. The weather was partly cloudy, damp, cool and very very windy. Even though it was called a SHAKE DOWN CRUISE, nothing shook loose... Stopped for lunch at the American Legion Hall on 92 hi-way.



Our second road trip was a dream, sunshine, dry roads, and the cars ran beautiful, had ten antique and two modern. twenty two members in attendance. What a display of WW 1 memorabilia, you could spend several days if you were to read all the material available. This was a terrible WAR. Legs tired we headed for the Corner Cafe, as is always the case they out did themselves. Someone had a Cobb salade and got the entire corn field. We have been on many tours but I believe the NWMO ones have been by far the best. what ever you do don't miss the next ones. Check the oil, radiator, gas tank, let your hair fly, lets go MODEL 'A' ing!!!!!!!!!!!!!!!!!!!!!!!!!!!!



HERE'S MY CARD

A directory of service professionals

Serving

Northwest Missouri Model 'A' Ford Club

Purchase Your Parts From The Following Vendors



DON'S SERVICE

ALIGN BORING • BABBITTING
BORING • MILLING • SLEEVING
VALVE SEATS

DON LOBNER
441-4649

26412 W. 87TH STREET
LENEXA, KS 66227

FREE BUCKLE AND COINCLAVE
MONEY AWAY, NO COST!!

BRATTON'S
ANTIQUE AUTO PARTS

ORDER @ 800 255-1529
FAX @ 800 774-9889
U.S. and Canada Only
Information: Call 827-9444
Phone: 864-1711 827-9889

- Our catalog contains over 3,200 Model A parts, each with a FULL description and illustration.
- Many full page technical drawings to help identify parts and assembly sequences.
- Supplying quality by using over 90% U.S. made parts.
- Serving the Model A restorer with quality parts since 1971.

Send for a FREE 194 page illustrated
Model A catalog

Web: www.brattons.com E-mail: ModelAorders@brattons.com

ZANE'S ANTIQUE CARS & PARTS



2008 Leland Way
Salina, KS 67401
(785) 827-6312



"A" REPAIR SHOP

BOB HESS

12731 CHERRY STREET, KANSAS CITY 64145
816-941-4101 Cell: 816-668-3902

COMPLETE LINE OF NEW & USED "A" PARTS



Mike's "A" Ford-Able Parts

Specializing in Model 'A' Ford Parts 1928-1931



MIKE BUTCHER



MILT'S MODEL 'A' REPAIR

SERVICE - REPAIRS - UPGRADES AND COMPLETE RESTORATION
OVER 20 YEARS EXPERIENCE - MAPCA CERTIFIED MASTER JUDGE

MILTON HESSEFORD

816-229-1945

CELL 616-590-4317