

# The ROAD RUNNER



MAFCA Charter

MAFCA "Newsletter of Excellence" 2015, MARC "Award of Excellence" 2015

MARC Region

## Officers

President:	Loura Cook
Vice President:	Bill Matteson
Secretary:	Mary Lou Matteson
Treasurer:	Bob Martin
Activities/Tours :	Doug Scott
Technical	Walt Jones
Concerns/Calling	Etta Ridgeway
Membership/Public Relations:	Liz Blakley
Merchandising:	Amy Lang
Raffle	Glenda Dunlop
Newsletter/Publishing:	Sherry Winkinhofer
Property:	Terry Richardson
Director:	Terry Richardson
Director:	Bill Skaggs

## Birthdays

## Anniversaries

## **No January Anniversaries**

## Monthly Meeting

Nancy Hess	01/03	Arlo Hartman	01/24
Nathan Spears	01/05	Bill Skaggs	01/24
Chuck Haber	01/06	Eldon Stamp	01/24
John Kunkle	01/08	Maxine Turner	01/24
Sherri McIntyre	01/12	Harvey Parker	01/28

## **CHANGE IN DATE FOR JANUARY MEETING!**

## **Due to News Years Holiday**

## **New date is JANUARY 8th the following Monday**

6:00 dinner available at special price, 7:00 meeting  
The American Legion, 92 Hwy & DD, Smithville MO

## Board Meeting

## **January 18th**

The 3rd Thursday of each month,  
7 pm , Mid-Continent Library

\* 8900 NE Flintlock Rd, Kansas City, MO 64157

\*New location

## Technical Meeting & Breakfast Club-KC

## **Big Biscuit in Liberty**

Please join us every Wednesday 7:00 am to "whenever"  
at the Liberty Corner Shopping Center, at 840 Missouri Highway  
291, (816-429-5314)

## Technical Meeting & Breakfast Club-St Joe

Every Monday 8:00-10:00 AM  
Hy-Vee 201 North Belt Highway, St. Joseph

## Ice Cream & Socializing

Every Saturday evening 6:00 PM  
**Moved to Wendy's in Liberty**  
3 Victory Dr, Liberty, MO 64068

## **Presidents Comments:**

Happy New Year to everyone! It is a great honor for me to be President this year. We are beginning the year with a wonderful board and I look forward to an exciting year.

Some of my goals are to improve interaction and communication between the board and the club members. I look forward to including interaction not only with our club members, but with other area clubs as well.

I am inviting comments, ideas, and advice that improves our club events and activities. This is going to be a an exceptional year!

My thanks to everyone...it is you that makes our club so outstanding!

Happy Model A'ing!

Loura Cook, President.

---

*The difference between genius and stupidity  
Is that genius has its limits.*

---

## **Editor's Comments:**

I hope everyone's Christmas was a nice one! I enjoyed this White Christmas, although I didn't have to even go outside! I wished I could have done an "A in the snow" picture, but the Old Lady is tucked warmly away in my brother's barn and that's where she's staying until spring. Oh well!

Just because it's winter doesn't mean there won't be a lot of Model A fun going on. Check out the calendar for the first workshop of the year planned at Terry's next month. I'm sure it's just the first of many fun things planned for the new year.

I'm hoping to soon find a new parking place for the Old Lady and myself somewhere close to all the action, so keep your fingers crossed for me. I like my place here in Nebraska, but I miss being down there too! Seems like barely a week goes by before something comes up that I need to drive back to KC for. At least it's only a 2 1/2 hours drive, I can almost do it in my sleep now (just joking!).

I'm looking forward to starting the eleventh year of being Editor of this newsletter, and I hope I'm not starting to get stale. Remember, I'm always looing for new stories, articles, pictures and ideas to keep the paper interesting. Don't hesitate to call, email, or mail me anything you think would be of interest to other members. Happy new A Year!!

Happy A'ing

Sherry Wink  
Editor

## National Awards Banquet—Oklahoma City

Laura and I attended the National meeting in OKC this month and had a ball! It was great to see all the people that I email and talk to all year long. We saw the new National Board installed, and, oh, by the way, picked up a small award ourselves! The Road Runner received a Certificate of Merit for 2017. A nice surprise!



We also attended Jim Spawn's great seminar on Fred Jones, one of the largest Ford Dealers in the country during the Model A Era and visited local sights.

We had a great time!



**December 2** - National Awards banquet in Oklahoma City, the new MAFCFA directors for 2018 were announced:

President: Doug Linden, Vice President: David White, Secretary: Kay Lee, Treasurer: Alex Janke, Membership: Jay McCord, Advertising: Dan Foulk, Chapter Coordinator: Garth Shreading, Publications: Doug

## The Ford Truck saves valuable minutes



This advertisement for a AA truck was issued in December 1930. I love the way they used a lot of red shades with a little green mixed in to tie in with the Christmas feelings!



## Activities

"Departure places and times for events will be published on the Web Site and Newsletter the month prior to the event".

### **January 20th-Work Shop Day 3**

Terry's Workshop  
21815 Woodruff Road, Weston  
8 a.m. Sharp, lunch at Dearborn Café  
Bring a lawn chair

### **June 3-8 – A's in the Ozarks" Regional Meet**

Springfield, Missouri --  
Hosts: Heart of America Model A Club  
Info: Lance Burton, 816-809-8648.

### **June 24-29 -- MAFCA National Convention**

Reno-Sparks, Nevada  
Hosts: Northern California Regional Group

If you are planning on joining in on any of the tours or activities, please sign-up at the meeting or let the tour contact know in advance.  
That way if an event has to be canceled or has a location or the schedule changed, you will be notified!

*January Meeting: Learn how  
service dogs are trained and paired  
with America's wounded veteran's  
through a program called  
"Warrior's Best Friend".*

### **NWMO Model A Merchandise**

Order your name tag now!  
New magnetic version available  
(cannot have pacemaker with these)

Also available: vests, t-shirts, sweatshirts,  
car magnets, pins, & decals!

Email [Amydaniellelang@gmail.com](mailto:Amydaniellelang@gmail.com)  
Or call 816-651-9567

### **Free MAFCA Membership Offer**

Ever been a member of MAFCA, the Model A Ford Club of America? If not, you might not realize just what you are missing. But now's the time to find out. Just contact Jay McCord at [freemembership@mafca.com](mailto:freemembership@mafca.com) and he can set you up with a free membership for 2018!



### **Jim Spawn retiring as Editor of the national Restorer Magazine**

After 17 years, Jim has decided to step down as Editor of this award winning publication. We all owe him a huge round of applause for all the support and promotion of this wonderful hobby that he has done throughout those years.

Jim has been a member of our club since very early on, maybe now he'll have a little extra time to come join us even more often at the local events! Congratulations Jim!!



### **Wanted—Photos for the New Directory**

We are printing a new Membership Directory early in 2018. This year we are adding a new element that has long been requested by our members. The plan is to include as many member pictures as we can.

So, we need all members to do two things:

1. Please ensure we have your current information for the directory. I will have a copy of the roster at the January meeting you can review to ensure it all up to date. Or you can email or mail me any needed info. We want to ensure we have correct address, phone numbers, emails, Birthday and Anniversary info.

Send me a picture to include with your info. For best results, a head and shoulder shot will be need as the pictures will be black and white, and only about 1 or 1 1/2 inches big to fit in the available format.

Please have all photos to me no later than the January meeting if you want it to be in the directory.



Sunshine/Concerns  
(816) 719-9997



Etta Ridgeway is our Sunshine/Concerns lady! If you know anybody in need of a card or phone call, please let her know. And, if you just want to share the news of a happy event, such as a new grandbaby or a wedding, let her know that too!

### **Deadline for the Next Road Runner The 20<sup>th</sup> of the preceding month**

Email to [swinkinhofer@hotmail.com](mailto:swinkinhofer@hotmail.com)  
Or mail to: Sherry Winkinhofer  
14900 Green Briar DR  
Smithville Mo. 64089

### **Club Contact Information:**

President Loura Cook: 816-632-1776  
All Officers: [info@nwmoModelA.com](mailto:info@nwmoModelA.com)  
Publications: [swinkinhofer@hotmail.com](mailto:swinkinhofer@hotmail.com)  
816-519-2630

### **Visit [www.nwmoModelA.com](http://www.nwmoModelA.com) today!**

Please email any info, pictures, questions  
& suggestions to  
[swinkinhofer@hotmail.com](mailto:swinkinhofer@hotmail.com)





# Christmas Party

I hope everyone had as good of time at the Christmas Party as I did! I went home happy but exhausted afterwards, how about you? We had 56 members signed up for this annual event. The tables were full of people in their festive and cheerful outfits and wonderful vintage looks! Check out the pictures on the next page.

Our buffet meal was delicious and plentiful, and our glasses kept full! The room rang with the sound of laughter and people visiting with friends and tablemates. The gavel was passed, awards presented, and a little entertainment showed up too! All in all, a very nice afternoon. I hope you were one of the lucky ones who were able to attend!



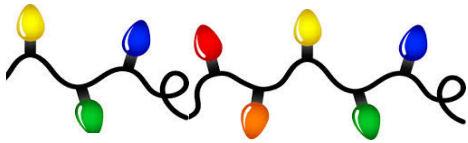
The gavel was passed from outgoing President Bill Skaggs to incoming President Laura Cook.



Lyman was so busy taking pictures of all the other members that this is the only picture we got of him and Etta together! But he did a beautiful job on those pics!



Laura presented Charlie Ismael with the "Outstanding Member of the Year award for his life long contributions to the hobby and to the club. Attaboy Charlie!



Kay Goodman from the Saint Joseph Rubidoux Players entertained us in her persona of Lizzie King, an (in)famous historical figure of the early days of the city. More than a few gentlemen were left blushing as she made her rounds among the tables!



This year's centerpieces were gingerbread gas stations, inspired by the McFall Station at the Lathrop Antique Fairgrounds. A lot of gingerbread and a LOT of sugar went into the making of seven of these!

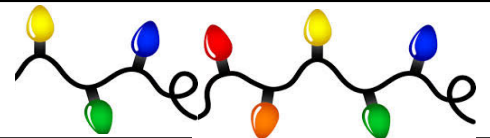


Table favors were edible this year. A unique gingerbread Model A Sedan made from a cookie cutter designed just for this event!



A few more assorted pics from the party!



# Christmas Photos



Lorene & Cliff Snow



Mary Lou & Bill Matterson



Pat & Kay Lawler



Bill Auch



Ron Anderson



Sue Long & Leland Daise



Marilyn & Ed Ernat



Rosemary & Gary Smith



Gary Harles & Glenda Dunlop



Peggy & Harvey Roseberry



Delores & Richard Dahms



John & Jody Layne



Eddie & Marilyn Griggs



Junior & Liz Blakley



Karen & Chuck Goodwin



Janice & John Harmon



Charlie & Judy Ismael



Terry & Peggy Richardson



Loura Cook



John & Janis Kunkle



Brenda & Ray Meyer



Joe & Pat Wishon



Sandi & Jim Shaw



Nancy & Bob Hess



Bill & Sandy Skaggs



Sandy & Lonie Hank



An article found in the January 1928 edition of *Woman's World*. Interesting not only for the handcrafted flowers but also for the color combinations suggested!

## The Newest Felt Flowers

*Blossoms That Herald the Advent of Spring-- For Every Frock and Coat Easily Cut Out and Made by Inexperienced Fingers*

A bouquet of felt flowers is the smartest touch for the winter costume, and there is an endless variety to the kind of flowers and the colors. Two of the bouquets have yarn pompons for the centers, which form a soft and colorful contrast to the felt.

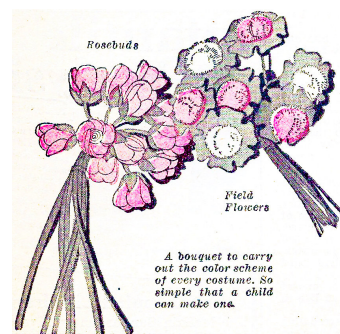
**Daisies.** The outer petals are deep rose with scalloped edges. On top are beige petals with a soft pompon of black yarn for the center. Leaves are green felt. Stems are green. The large flower is 3 inches in diameter, and the small one 2 1/4 inches. Another color combination for the bouquet is to have the outer petals brown, the inside ones orange felt and the pompons beige. A third combination is orchid felt for outer petals, beige felt for upper ones and violet yarn pompons for the center.

**Cosmos.** Flowers are pink, rose and henna felt with stamens tipped with gold tinsel. Leaves are green felt and stems green. Flowers are 1 inch in diameter. The bouquet is 5 x 4 inches. The same flowers can be cut from three shades of orchid felt or a third color combination would be flowers of yellow, brown and orange felt.

**Forget-me-not.** Flowers are pink, rose and henna. Each one is made of a narrow strip of felt rolled tightly and tacked in place at the end of a green stem. Leaves are green strips of felt. Each flower is 3/8 inch in size. The bouquet is 4 3/4 x 3 1/4 inches. The bouquet may also be made from three shades of orchid felt or for a third color scheme yellow, orange and brown felt are used for the flowers.

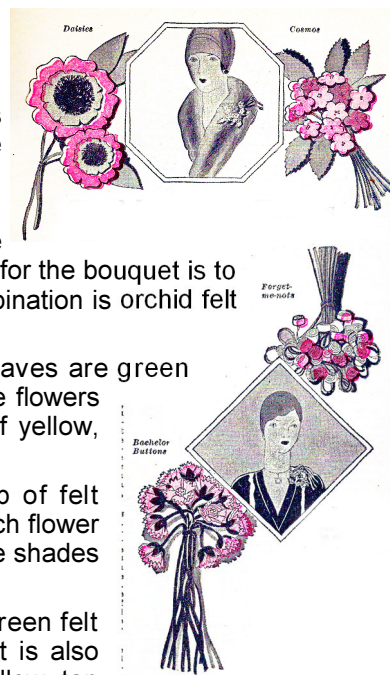
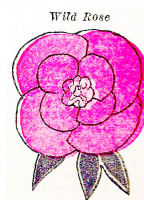
**Field Flowers.** Flowers are yarn pompons of light and dark peach, each on a scalloped green felt foundation 1 1/2 inches in diameter. Stems are green. The bouquet is 5 x 3 1/2 inches. It is also attractive with yarn pompons of pink, light and dark rose, each on a gray felt foundation. Or yellow, tan and orange pompons may be used mounted on brown felt.

**Bachelor Buttons.** Each flower has petals of light blue on top of dark blue felt petals. Centers are yellow felt and chalice is green felt, with long graceful stems of green felt. Flowers are 1 1/8 inches in size. Bouquet is 4 x 7 inches. It is also designed with light and dark rose petals, yellow centers, and green leaves. Or the flowers may have yellow and orange petals with black centers and green felt stems.



**Rosebuds.** Some of the buds are pink, some rose and some red felt. Their centers are strips of yellow felt rolled tight to form a circle. Chalice is green felt and the long graceful stems are green felt. The same bouquet is carried out with rosebuds in yellow, henna and gray felt. A third color scheme has rosebuds in blue and in orchid with yellow centers, green chalice and green felt stems.

**Wild Rose.** A single wild rose, 2 1/2 inches in diameter, has outer petals of medium rose, henna for the middle petals and pink for the center, which is caught together to form a cup.



This apple dumpling recipe looks very tempting—it's from the January 1929 edition of "Woman's World", Magazine

## Baked Apple Dumplings

Sift 2 cups flour with 1/2 teaspoon sugar, 1/4 teaspoon salt and chop into it 3/4 cup shortening. Then rub with finger tips until well mixed and wet with ice water to a dough. Roll, fold and roll again. Do this four times in all. Roll thin and cut in 6-inch squares. In center of each put pared and cored half of tart apple, hollow side up. Fill hollow with sugar and cinnamon and add a dot of butter. Fold pastry ends over apple and wet edges so they stick when pressed together. Set close in buttered pan, folded side down, in 1/4 cup boiling water and sprinkle top with sugar. Bake with basting until of rich brown. Serve hot with Hard Sauce. Decorate with apple jelly.



## Hard Sauce

Cream 1/4 cup butter or substitute until like thick cream, then work into it a cup of powdered sugar and a teaspoon cream or evaporated milk. When light, work in 1/4 teaspoon nutmeg.

## Brands We Still Know

In 1886, Charles Hall, Working with his sister Julia in a shed attached to the family home in Oberlin, Ohio, discovered a way to smelt aluminum using electrolysis. Almost simultaneously French chemist Pault Héroult discovers the same process. (Today, the Hall-Héroult Process is the one method by which almost every aluminum producer in the world operates.)

In 1888, Hall founded the Pittsburgh Reduction Company, opening a facility in Pittsburgh. In 1901 new alloys allowed the production of lightweight aluminum bodies, drivetrains and other automobile parts, and in 1903 the Wright Brothers used aluminum from the company for the engine block and crankcase of the Wright Brothers' historic "Flyer".

"The Aluminum Company of America" became the firm's new name on January 1, 1907. The acronym "Alcoa" was coined in 1910, but not adopted as the official corporate name until 1999. Alcoa introduced aluminum foil to the public in 1910. In 1928 Alcoa pioneers lightweight, energy-efficient aluminum windows.



December 1931  
Better Homes & Gardens



## Model A Mystery Part

What is it?  
Do you know? For "Bragging Rights",  
email [techguy@nwmoModelA.com](mailto:techguy@nwmoModelA.com)!



Photo courtesy of Mike's  
A-Ford-Able Parts

## Last Months' Mystery Part

A set of four pointed shock needles. Used  
from May through  
October of 1928. .

Did you know?

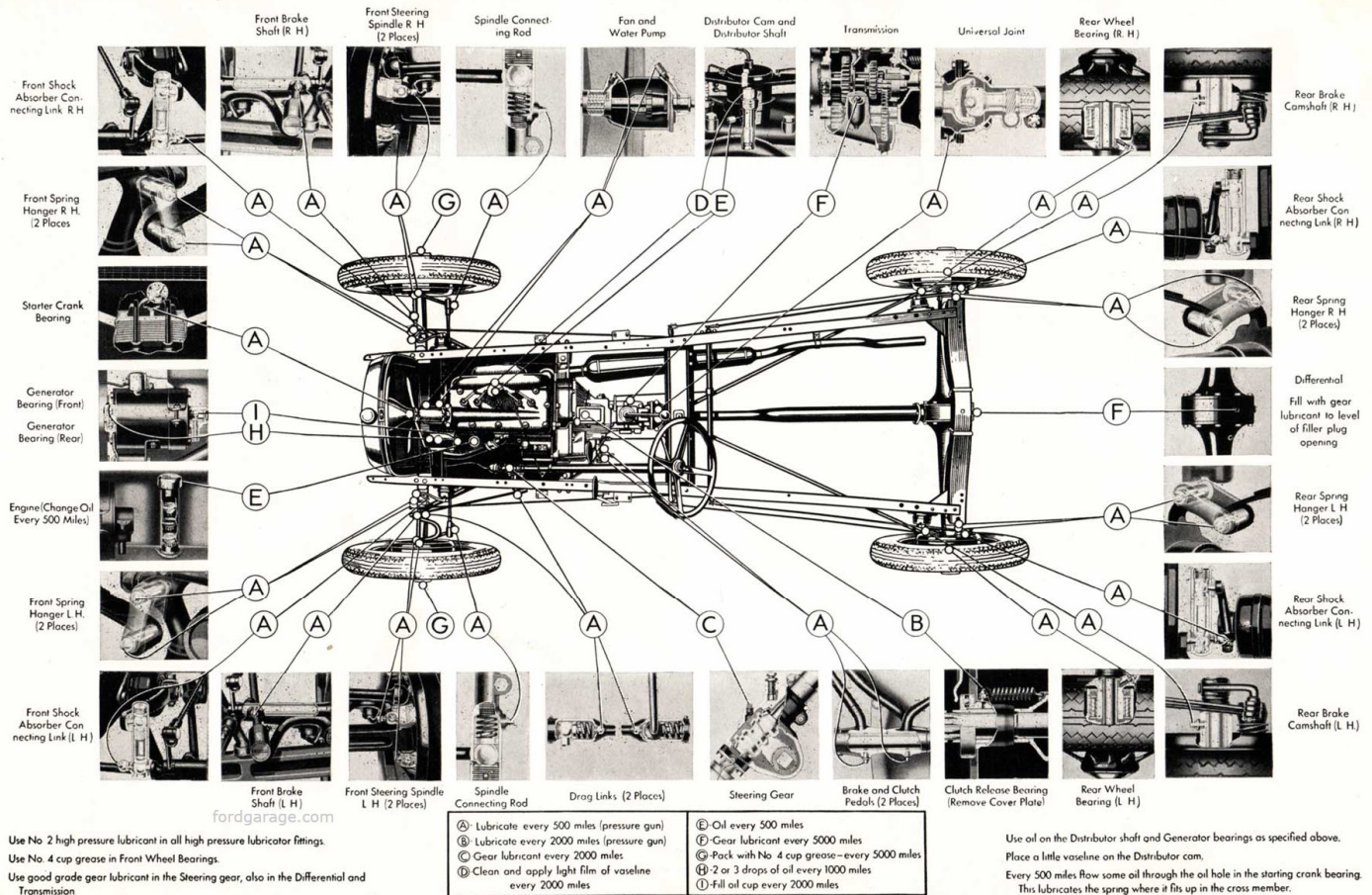


Photo courtesy of Snyder's  
Antique Auto

## Walt's Old Time Tech Tip

From [www.fordgarage.com](http://www.fordgarage.com).

# Model "A" Lubrication Chart



Thorough lubrication of the chassis is assured by fittings at all points, permitting lubricant to be forced into the bearings at high pressure



## Jim's Technical Tip

From Jim Cannon, MAFCA Technical Director

**Winter Tire Pressures**—If you drive your Model A in the winter, and I hope you can, remember to check the tire pressure when the mercury drops. Cold temperatures make the air pressure in the tires go down. Low tire pressure makes steering harder, and lowers your gas mileage. You may notice a little bit of a vibration, due to flat spot on the tires, when you first start driving. These should go away as the tires roll and the rubber warms up.







## For Sale / Wanted To place an ad send your information to swinkinhofer @Hotmail.com, or mail to Sherry Winkinhofer

As a service to our members, the area Model A clubs have decided to share our classified ads sections! (this will include Model A specific items only.) Ads will run approximately 3 months unless we are notified that the item is still available.

**For Sale:** 1929 Model A 4-door Phaeton, body-off restoration 7 years ago, looks great, drives great. Beautiful paint and LeBaron-Bonney upholstery and top. Trunk, side curtains, white-wall tires, turn signals. Has won many trophies. Fun to drive. Always turns heads. Car is in Orlando, Florida, area. \$32,000 OBO

**Contact:** Jim Cannon 832-692-2288 (NWMO -01/2018)

**For Sale:** 1930 Deluxe Roadster. Sharp looking Washington Blue with black fenders and yellow wheels. V8 clutch, rebuilt steering and water pump. A luggage rack with nice trunk, step plates, and quail.

**Contact:** Karol Russell 816-217-4013 (NWMO 10/2017)

**Wanted:** 19" Model A rims.

**Contact:** Terry Richardson (816) 365-0885 (NWMO 11/2017)

**For Sale:** 1930 Deluxe Fordor Sedan. Total restoration in 2011 by professional restorer Charles A. McKeown. 78,500 original miles and driven 21 miles since restoration. Health issues force sale. All original except Mitchell transmission and overdrive, converted to 12 volts and has front and rear seat belts. Restoration album included. \$33,500. Arcadia, CA

**Contact:** Sue Chandler 626-447-1097 (POA 10/2017)

**For Sale:** 1931 Model A Rumble Seat Coupe older restoration. Strong engine, new tires, wiring harness with turn signals.

**Contact:** Bill Skaggs 816-807-6300  
billskaggs.ahm@gmail.com.

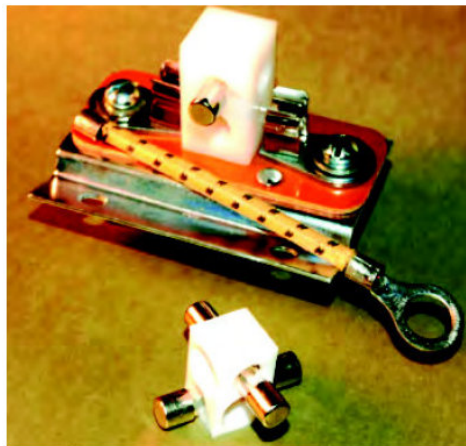
(NWMO 12/2017)

An interesting article found in the Quail Mail . Lehigh Valley Model "A" Club's Monthly Newsletter :

## Double Fuse Holder

By Walter Yetmen

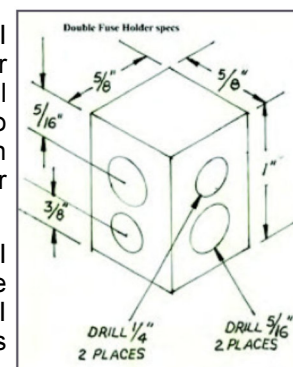
While perusing the April 1942 issue of POPULAR MECHANICS magazine, I came across a product review of an inline fuse mount. It was manufactured by the Little fuse Company and incorporated a rubber block holding two fuses. The advantage of this arrangement being that a spare fuse was



always available for replacement. I suspect it was designed primarily for the radios of the time, as almost all of them used the glass type fuses to protect the circuitry. The concept can easily be adapted for use in our Model "A" Fords.

At the recent show in Hershey, I purchased one of the accessory fuse mounts manufactured by Snyders. I decided to make a block using this two fuse concept. Instead of rubber, a piece of nonconductive plastic was used.

The plastic was easily cut and drilled. The results can be seen in the photo. The larger 5/16" hole drilled perpendicular to the fuse holding 1/4" hole, allows for seeing the condition of the fuse used in the circuit. The diagram gives the dimensions as used for the Snyder's block. If another manufacturer is used, adjust the dimensions accordingly.



## Birthday Celebration

John Harmon shared this great shot of an impromptu birthday party for Bill Auch at the last Wednesday Morning Breakfast.

As you can see, a good time is being had by all, and why not? How often do you get cake for breakfast?!





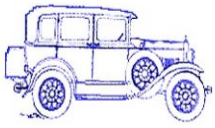
Time to think about renewing your membership for next year. Bet the holiday rush – do it now!



## Northwest Missouri Model A Ford Club Membership Application

[www.nwmomodela.com](http://www.nwmomodela.com)

<input type="checkbox"/> New Membership: <input type="checkbox"/> Renewal:			
Name:		Spouse/Partner:	
Address:			
City:		State:	Zip:
Home Phone:	Member Cell:	Other Cell:	
Member Email:		Other Email:	
Month/Day of Birth:	Anniversary:	Month/Day of Birth:	
Allow information for club roster or handbook    yes <input type="checkbox"/> no <input type="checkbox"/>			
<b>Model A Information</b>			
Year:		Model:	
Indicate Condition: <input type="checkbox"/> Show <input type="checkbox"/> Restored <input type="checkbox"/> Being Restored <input type="checkbox"/> Drivable <input type="checkbox"/> Basket Case (but there's still hope!)			
Year:		Model:	
Indicate Condition: <input type="checkbox"/> Show <input type="checkbox"/> Restored <input type="checkbox"/> Being Restored <input type="checkbox"/> Drivable <input type="checkbox"/> Basket Case (but there's still hope!)			
<b>Membership in National Organization</b>			
<input type="checkbox"/> Model A Ford Club of America (MAFCA) <input type="checkbox"/> Model A Restorers Club (MARC) <i>National affiliation is strongly encouraged but not required</i>			
<b>Membership in other local clubs</b>			
<input type="checkbox"/> Members of Plain Ol' A's <input type="checkbox"/> Heart of America <input type="checkbox"/> Henry's A's <input type="checkbox"/> Other			
<b>Auto Insurance Requirements:</b>			
Owners of all cars must meet state mandated insurance requirements for vehicles. The Northwest Missouri Model A Club is not legally responsible for any expenses incurred due to accidents or injuries sustained in club sponsored events.			
Signature:			Date:
<input type="checkbox"/> Enclosed are my dues for membership year January 1 to December 31 <input type="checkbox"/> Enclosed are my dues for partial year membership (Prorated per month; check with the membership director) \$_____			
Please make checks payable to: <b>NORTHWEST MISSOURI MODEL A FORD CLUB</b>			
<input type="checkbox"/> Send Newsletter by US Mail		<input type="checkbox"/> Email attachment. Will save club postage	



## "A" REPAIR SHOP

**BOB HESS**

**12731 CHERRY STREET, KANSAS CITY 64145**

**816-941-4101 Cell: 816-668-3902**

**SERVICE - REPAIRS - UPGRADES AND COMPLETE RESTORATION  
OVER 20 YEARS EXPERIENCE - MAFCA CERTIFIED MASTER JUDGE**

## A - Z Model A Parts - Zanes

**Ron and Sondra Kester, Owners**

773 Central Street

Glade, Kansas 67639

Phone: 785-543-6729

Fax: 785-543-3013

e-mail: 2officegirls@ruraltel.net

## AMERICAN LEGION

USMC NAVY  
ARMY USAF  
COAST GUARD

Serving ALL Veterans and  
the Community



Remembering  
Those Who Served

Smithville American Legion Post 58

P.O. Box 158

Smithville, Missouri 64089

(816) 532-8115

LOCATED AT:

Hwy 92 & County Road DD

Find us on Facebook at:

<http://www.facebook.com/SmithvilleAmericanLegionPost58>

## AMERICAN FAMILY INSURANCE

[www.amfam.com](http://www.amfam.com)

### DAVID LAWSON

DAVID LAWSON AGENCY, INC.

1520 N Church Rd Ste C  
Liberty, MO 64068

Office: (816) 792-4448

Fax: (855) 507-5894

Email: [dlawson@amfam.com](mailto:dlawson@amfam.com)

2015 American Star Certified Agency

Access Anytime: 1-800-MYAMFAM (800-692-6326)



## Bob Bond's Artistry

Quality  
Craftsmanship

• Graphics

• Lettering

• Pinstriping

• Airbrushing

over **48**  
years

• Flames

• Gold Leafing

• Logo Designing

• Automotive Art

**816-554-1800 1-800 BOB BOND**

25612 NE Colbern Rd. Lee's Summit, MO 64086-9508

[www.bobbondart.com](http://www.bobbondart.com)

## BRATTON'S

**ANTIQUE AUTO PARTS**



**800-255-1929 Phone**

**[www.brattons.com](http://www.brattons.com)**

800-774-1930 Fax

1606 Back Acre Circle

Mount Airy, MD 21771

*Your source for Quality Model A Ford Parts since 1976*

Mark Freeman



## EAGLE AUTO STRIPPING

Blasting With Plastic, Glass & Sand  
Fiberglass, Aluminum, Steel, Any Surface  
[www.eagleautostripping.net](http://www.eagleautostripping.net)

(913) 334-6331

Fax (913) 334-6333

7300 Kaw Drive (K32)

Kansas City, KS 66111

"Best Strip Joint In Town"

"HAVE AN 'A' DAY"



**Michael Butcher**

**1-888-879-6453**

email: [mike@mikes-afordable.com](mailto:mike@mikes-afordable.com)

[www.mikes-afordable.com](http://www.mikes-afordable.com)



Specialising in 1928 - 1931 Model A Ford Parts



Aries Mufflers

**New and Used Antique Parts**

## MILT'S MODEL 'A' REPAIR, PARTS & SALES

F.S. Modern Ignitions • Mitchell Overdrive  
Overdrive & 4-Speed Transmissions Installed

403 Cypress St

Grain Valley, MO 64029

[hesfrt@sbcglobal.net](mailto:hesfrt@sbcglobal.net)

**Milton Hessfort**

Cell 816-590-4317



# AUTO COLOR & EQUIPMENT

524 E. 23rd Street  
Independence, MO 64055

Phone: 816-254-5630  
Fax: 816-254-5635

## TOUCH UP

Aerosols - Bottles

Computerized Color Match Available

[www.auto-color.com](http://www.auto-color.com)

Tom Kautz  
Owner

[www.tomkautz.com](http://www.tomkautz.com)

**KAUTZ**  
Established 1916



Rebuilding Starters, Generators, and Alternators  
6volt - 12 volt

920 Commercial St.  
Atchison, KS 66002

Phone: (913) 367-1717

## Snyder's ANTIQUE AUTO PARTS

12925 Woodworth Rd. New Springfield, OH 44443

**The World's Largest Selection of 1909-31 Ford Parts**

**FREE Fully Illustrated Catalog**  
\$10.00 outside the U.S., Canada, & Mexico

**Servicing the Hobby  
For Over 50 Years!**

Toll Free Ordering (888) 262-5712 or FAX (888) 262-5713

For technical info (330) 549-5313 or FAX (330) 549-2211

Order On-Line @ [www.snydersantiqueauto.com](http://www.snydersantiqueauto.com)



## Powder Coating & Media Blasting

**Tammy Abma**  
Office Manager

Phone: 816.220.3170  
[tammy@opcpowdercoating.com](mailto:tammy@opcpowdercoating.com)

3355 SW Eastbound US Hwy 40  
Blue Springs, MO 64015  
[www.opcpowdercoating.com](http://www.opcpowdercoating.com)

**-Membership is Strongly Encouraged in Both of these Excellent National Organizations-**



### **Model A Ford Club of America**

**Join on line at [MAFCA.COM](http://MAFCA.COM)**

**~Membership Benefits~**

The *Restorer* magazine (6 issues per year)

Technical Support (free via mail or email)

MAFCA Chartered Chapters in your local area

National Meets - National Banquets - National Tours

MAFCA also produces publications for sale including

Restoration Guidelines & Judging Standards; Paint & Finish Guide;

Hardware Standards, A series of publications on How to Restore Your

Model A; Era Fashion Guidelines; a number of Other publications  
related to the Model A Ford and its era

#### Membership Types Available

**U.S. Membership w/ print edition of The Restorer magazine - \$40**

**U.S. Membership w/ print edition and Electronic Link to The Restorer - \$45**

**Canada/Mexico Membership w/ print edition of The Restorer - \$50**

**Canada/Mexico Membership w/ print edition and Electronic Link to The Restorer Magazine - \$55**

**International Membership w/ print edition of The Restorer magazine - \$65**

**International Membership w/ print edition and Electronic Link to The Restorer magazine - \$70**

**International Membership w/ only Electronic Link to The Restorer magazine - \$40**

**Optional Initiation Package (Only \$10 extra), For New Members Only!**

Back issue of *The Restorer*, MAFCA Lapel Pin, MAFCA Decal, Name Badge .



### **Model "A" Restorers Club**

6721 Merriman Rd

Garden City MI 48135

(734) 427-9050 office

(734) 427-9054 fax

**Find Membership forms at**

**<http://model-a-ford.org/>**

#### **2017 Dues- New or Renewals**

**US Membership \$45.00**

**US Air Mail \$57.00**

**( ) Canada \$55.00**

**( ) International \$61.00**

#### **New Members Only- Partial Membership:**

**J/A, S/O & N/D issues only!**

**( ) US Membership \$24.00**

**( ) US & Canada Air Mail \$34.00**

**( ) International \$42.00**

With your membership you will receive a club membership I.D. card and the *Model "A" News*, our BI-monthly club magazine. In addition, each member is entitled to a free 40 word classified ad in each issue of our international publication, the *Model "A" News* (A good source of parts and information you may need for your car).

### **THE ROAD RUNNER**

% SHERRY WINKINHOFFER

14900 GREEN BRIAR DRIVE

SMITHVILLE MO 64089-8831